

PRODUCT INFORMATION

Clone ID	DM85
Target	B7-2
Synonyms	CD86; B7-2; B70; CD28LG2; LAB72; MGC34413
Host Species	Rabbit
Description	Anti-B7-2 antibody(DM85); Rabbit mAb
Delivery	3~4 weeks
Uniprot ID	P42081
IgG type	Rabbit IgG
Clonality	Monoclonal
Reactivity	Human
Applications	ELISA; Flow Cyt
Recommended Dilutions	ELISA 1:5000-10000; Flow Cyt 1:100
Purification	Purified from cell culture supernatant by affinity chromatography
Formulation & Reconstitution	Lyophilized from sterile PBS, pH 7.4. Normally 5 % - 8% trehalose is added as protectants before lyophilization. Please see Certificate of Analysis for specific instructions of reconstitution.
Storage & Shipping	Store at -20°C to -80°C for 12 months in lyophilized form. After reconstitution, if not intended for use within a month, aliquot and store at -80°C (Avoid repeated freezing and thawing). Lyophilized proteins are shipped at ambient temperature.
Background	This gene encodes a type I membrane protein that is a member of the immunoglobulin superfamily. This protein is expressed by antigen-presenting cells; and it is the ligand for two proteins at the cell surface of T cells; CD28 antigen and cytotoxic T-lymphocyte-associated protein 4. Binding of this protein with CD28 antigen is a costimulatory signal for activation of the T-cell. Binding of this protein with cytotoxic T-lymphocyte-associated protein 4 negatively regulates T-cell activation and diminishes the immune response. Alternative splicing results in several transcript variants encoding different isoforms.
Usage	Research use only
Conjugate	Unconjugated
DIMA Disclaimer	All DIMA recombinant antibodies are genuinely generated by DIMA Biotech. They are all under patent application. Any protein sequencing or reverse engineering attempt is prohibited. We are actively scrutinizing all patent application to ensure no IP infringement.



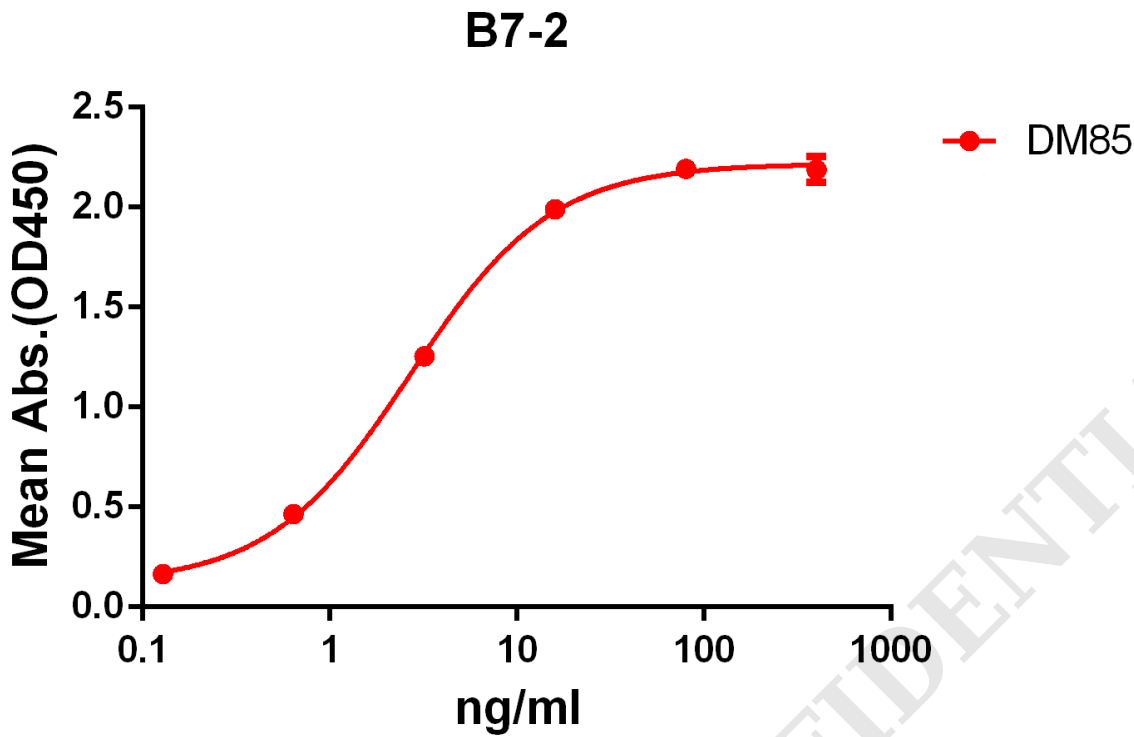


Figure 1. ELISA plate pre-coated by 2 µg/ml (100 µl/well) Human B7-2 protein, mFc-His tagged protein PME100034 can bind Rabbit anti-B7-2 monoclonal antibody (clone: DM85) in a linear range of 1-25 ng/ml.

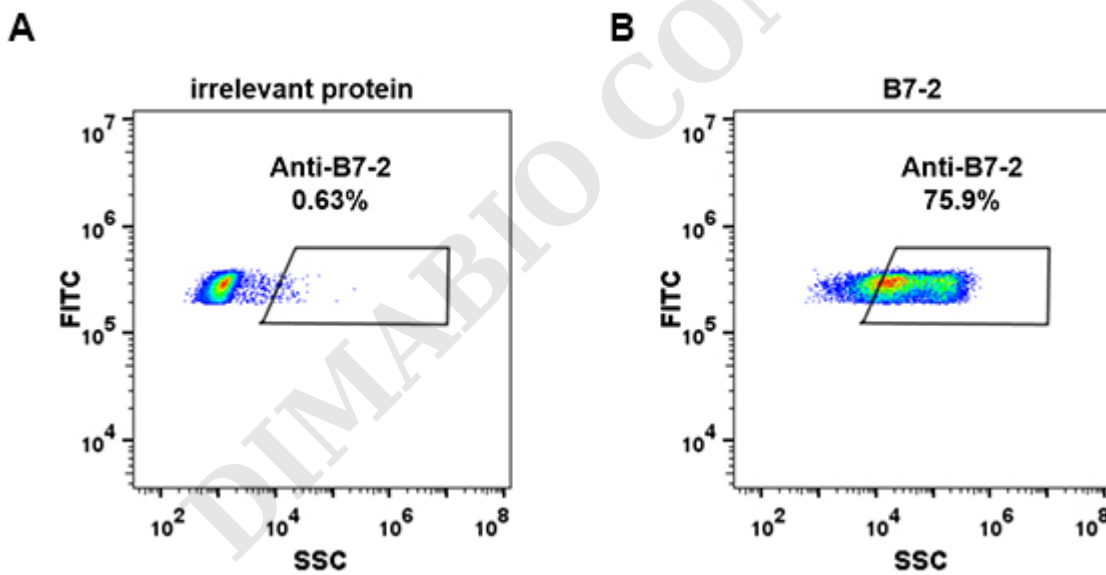


Figure 2. Expi 293 cell line transfected with irrelevant protein (A) and human B7-2 (B) were surface stained with Rabbit anti-B7-2 monoclonal antibody 1µg/ml (clone: DM85) followed by Alexa 488-conjugated anti-rabbit IgG secondary antibody.



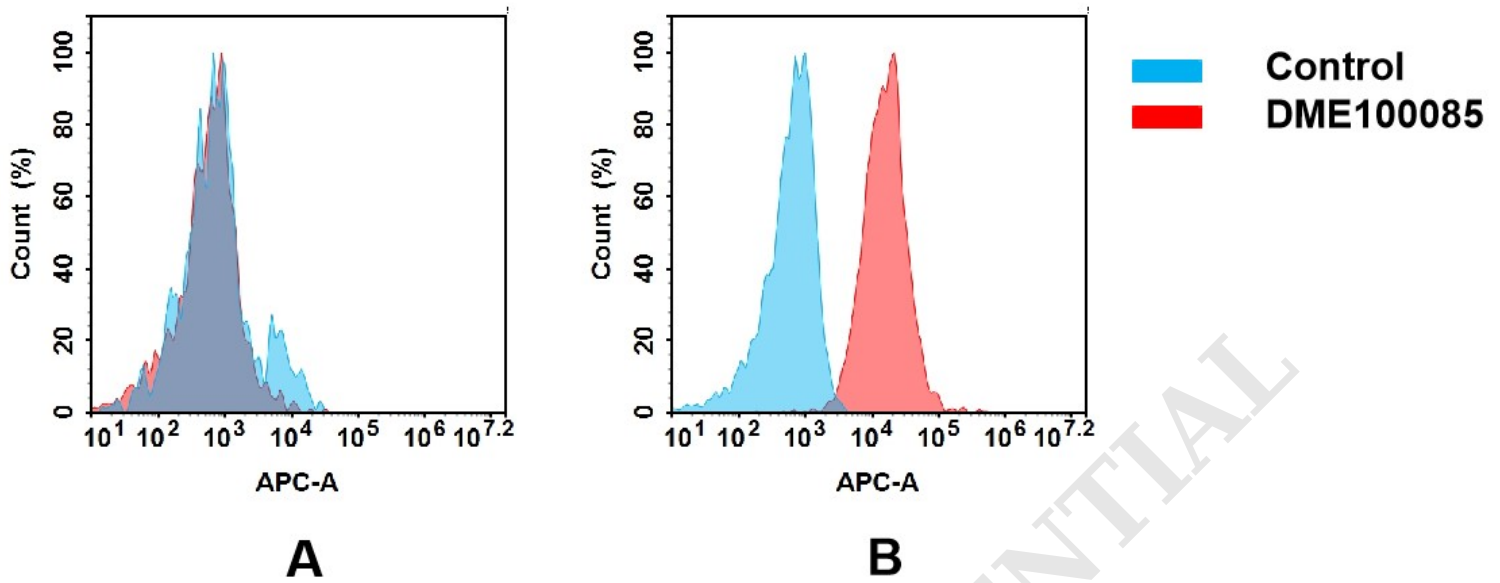


Figure 3. Flow cytometry analysis of antigen binding of rabbit anti-human B7-2 mAb(DME100085).

(A) DME100085 does not bind to 293T cells that do not express B7-2.

(B) A clear peak shift of DME100085 was seen compared to the control when incubated with B7-2-expressing Daudi cells, indicating strong binding of DME100085 to B7-2. Antibodies were incubated at 5 µg/mL

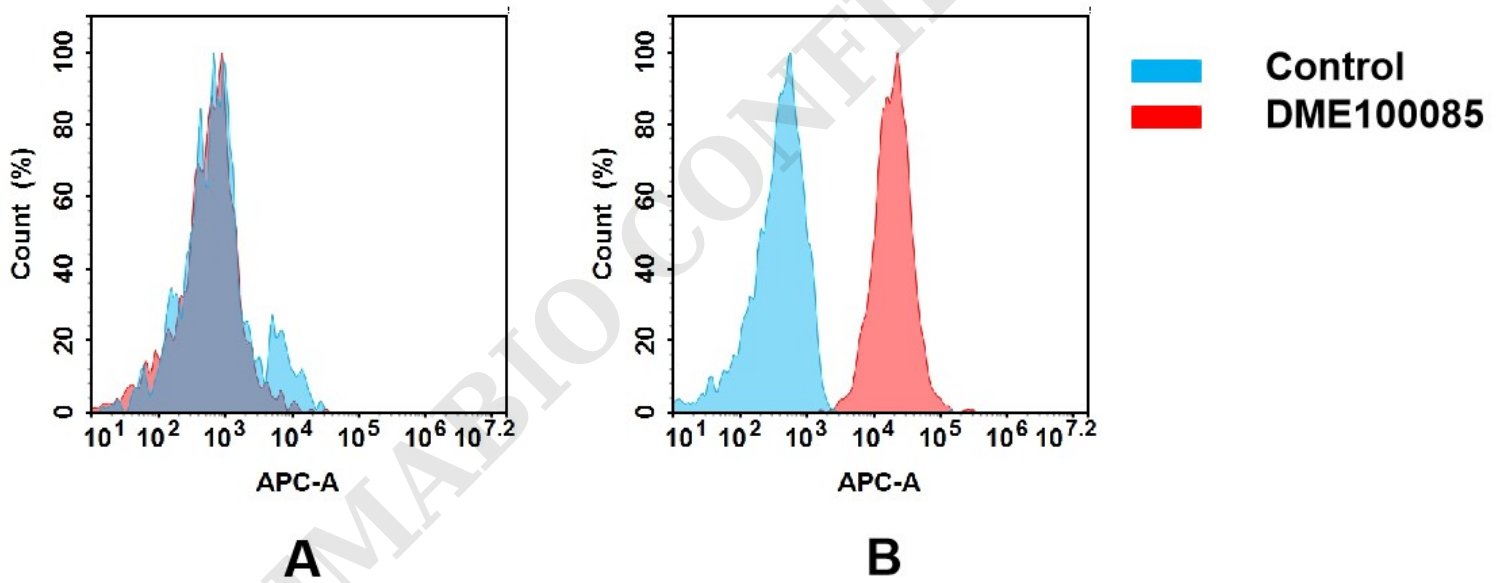


Figure 4. Flow cytometry analysis of antigen binding of rabbit anti-human B7-2 mAb(DME100085).

(A) DME100085 does not bind to 293T cells that do not express B7-2.

(B) A clear peak shift of DME100085 was seen compared to the control when incubated with B7-2-expressing Raji cells, indicating strong binding of DME100085 to B7-2. Antibodies were incubated at 5 µg/mL

