

PRODUCT INFORMATION

Clone ID	DM87
Target	PSCA
Synonyms	PSCA;UNQ206;PRO232
Host Species	Rabbit
Description	Anti-PSCA antibody(DM87); Rabbit mAb
Delivery	3~4 weeks
Uniprot ID	O43653
IgG type	Rabbit IgG
Clonality	Monoclonal
Reactivity	Human
Applications	ELISA; Flow Cyt; IHC
Recommended Dilutions	ELISA 1:5000-10000; Flow Cyt 1:100; IHC 1:100
Purification	Purified from cell culture supernatant by affinity chromatography
Formulation & Reconstitution	Lyophilized from sterile PBS, pH 7.4. Normally 5 % - 8% trehalose is added as protectants before lyophilization. Please see Certificate of Analysis for specific instructions of reconstitution.
Storage & Shipping	Store at -20°C to -80°C for 12 months in lyophilized form. After reconstitution, if not intended for use within a month, aliquot and store at -80°C (Avoid repeated freezing and thawing). Lyophilized proteins are shipped at ambient temperature.
Background	This gene encodes a glycosylphosphatidylinositol-anchored cell membrane glycoprotein. In addition to being highly expressed in the prostate it is also expressed in the bladder; placenta; colon; kidney; and stomach. This gene is up-regulated in a large proportion of prostate cancers and is also detected in cancers of the bladder and pancreas. This gene includes a polymorphism that results in an upstream start codon in some individuals; this polymorphism is thought to be associated with a risk for certain gastric and bladder cancers. Alternative splicing results in multiple transcript variants.
Usage	Research use only
Conjugate	Unconjugated
DIMA Disclaimer	All DIMA recombinant antibodies are genuinely generated by DIMA Biotech. They are all under patent application. Any protein sequencing or reverse engineering attempt is prohibited. We are actively scrutinizing all patent application to ensure no IP infringement.



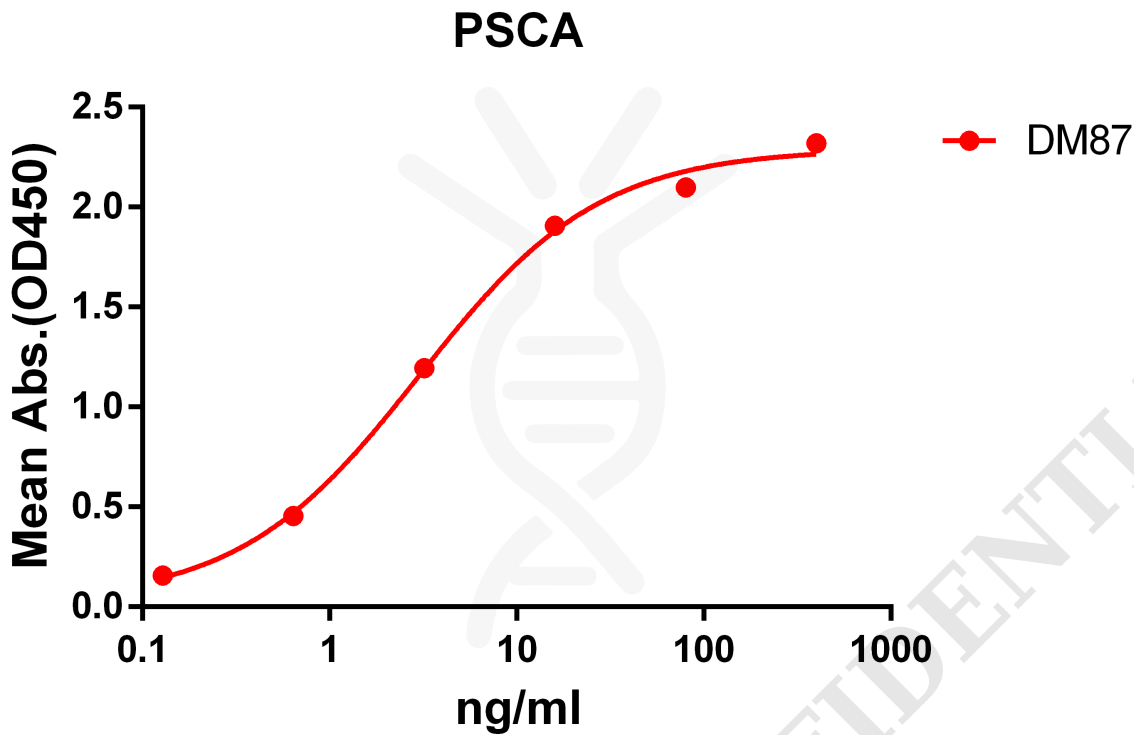


Figure 1. ELISA plate pre-coated by 2 µg/ml (100 µl/well) Human PSCA protein, hFc tagged protein PME100084 can bind Rabbit anti-PSCA monoclonal antibody (clone: DM87) in a linear range of 1-100 ng/ml.

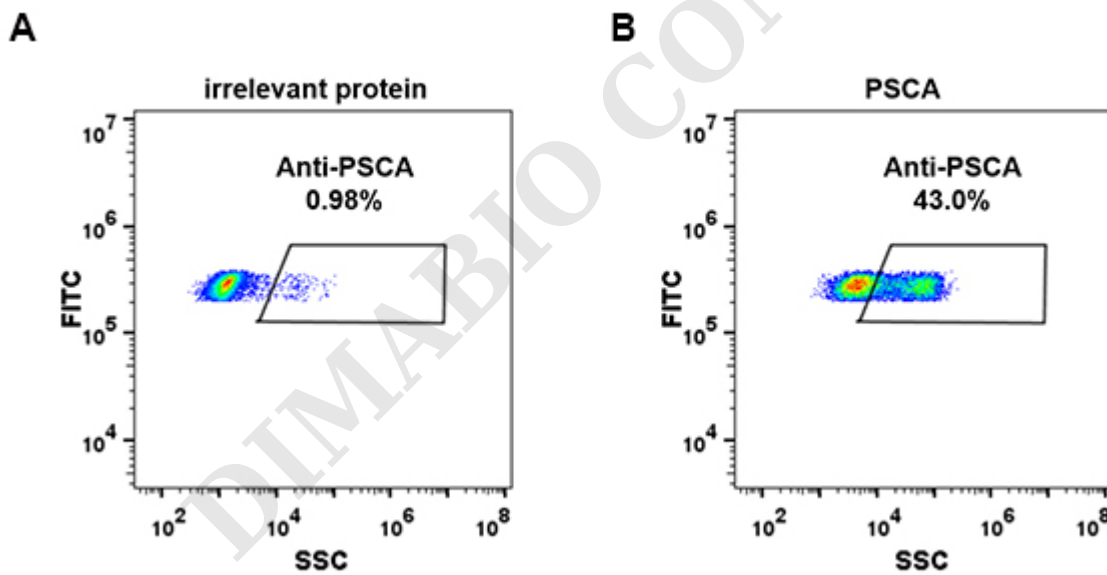


Figure 2. Expi 293 cell line transfected with irrelevant protein (A) and human PSCA (B) were surface stained with Rabbit anti-PSCA monoclonal antibody 1µg/ml (clone: DM87) followed by Alexa 488-conjugated anti-rabbit IgG secondary antibody.



DME100087

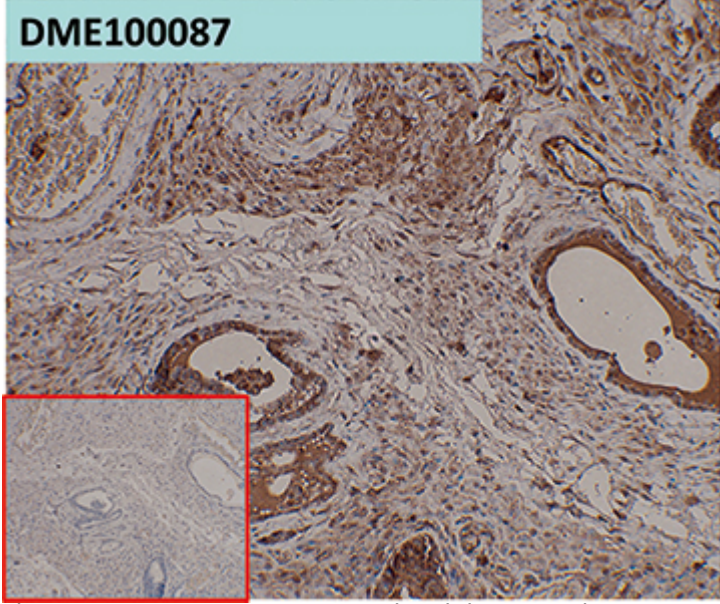


Figure 3. DME100087 at 10 μ g/ml staining PSCA in A431 xenografts in nude mice by IHC (SKU# DME100087)

DIMABIO CONFIDENTIAL

