

PRODUCT INFORMATION

Clone ID	DM68
Target	4-1BB Ligand
Synonyms	4-1BB Ligand;TNFSF9;CD137L
Host Species	Rabbit
Description	Anti-4-1BB Ligand antibody(DM68); Rabbit mAb
Delivery	In Stock
Uniprot ID	P41273
IgG type	Rabbit IgG
Clonality	Monoclonal
Reactivity	Human
Applications	ELISA; Flow Cyt
Recommended Dilutions	ELISA 1:5000-10000; Flow Cyt 1:100
Purification	Purified from cell culture supernatant by affinity chromatography
Formulation & Reconstitution	Lyophilized from sterile PBS, pH 7.4. Normally 5 % - 8% trehalose is added as protectants before lyophilization. Please see Certificate of Analysis for specific instructions of reconstitution.
Storage & Shipping	Store at -20°C to -80°C for 12 months in lyophilized form. After reconstitution, if not intended for use within a month, aliquot and store at -80°C (Avoid repeated freezing and thawing). Lyophilized proteins are shipped at ambient temperature.
Background	The protein encoded by this gene is a cytokine that belongs to the tumor necrosis factor (TNF) ligand family. This transmembrane cytokine is a bidirectional signal transducer that acts as a ligand for TNFRSF9:4-1BB; which is a costimulatory receptor molecule in T lymphocytes. This cytokine and its receptor are involved in the antigen presentation process and in the generation of cytotoxic T cells. The receptor TNFRSF9:4-1BB is absent from resting T lymphocytes but rapidly expressed upon antigenic stimulation. The ligand encoded by this gene; TNFSF9:4-1BBL; has been shown to reactivate anergic T lymphocytes in addition to promoting T lymphocyte proliferation. This cytokine has also been shown to be required for the optimal CD8 responses in CD8 T cells. This cytokine is expressed in carcinoma cell lines; and is thought to be involved in T cell-tumor cell interaction.
Usage	Research use only



4-1BB Ligand-DM68

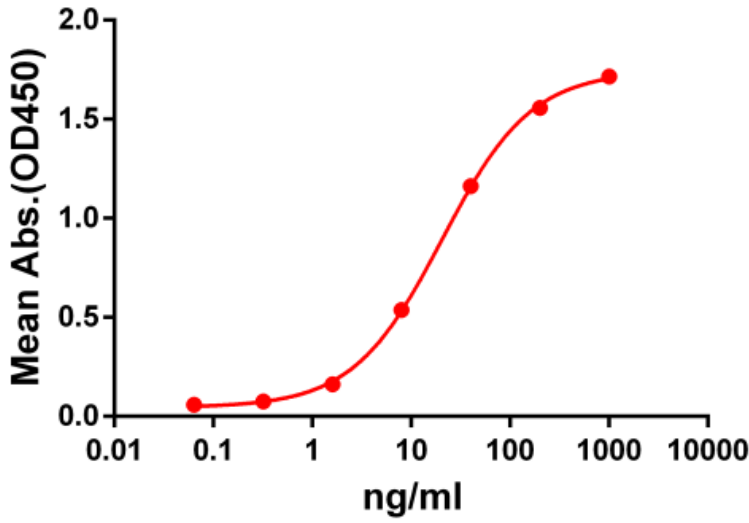


Figure 1. ELISA plate pre-coated by 2 $\mu\text{g/ml}$ (100 $\mu\text{l/well}$) Human 4-1BB Ligand protein, mFc-His tagged protein (Igetskuurl sku="PME100054") can bind Rabbit anti-4-1BB Ligand monoclonal antibody (clone: **DM68**) in a linear range of 1-100 ng/ml.

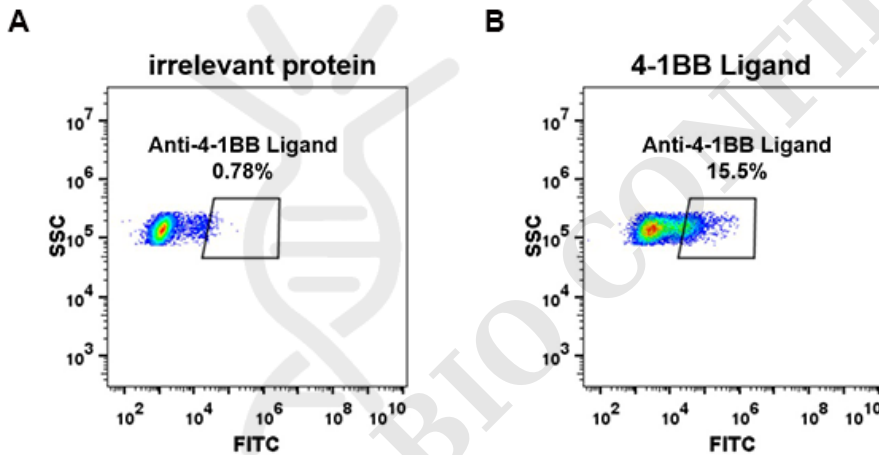


Figure 2. Expi 293 cell line transfected with irrelevant protein (A) and human 4-1BB Ligand (B) were surface stained with Rabbit anti-4-1BB Ligand monoclonal antibody 1 $\mu\text{g/ml}$ (clone: **DM68**) followed by Alexa 488-conjugated anti-rabbit IgG secondary antibody.

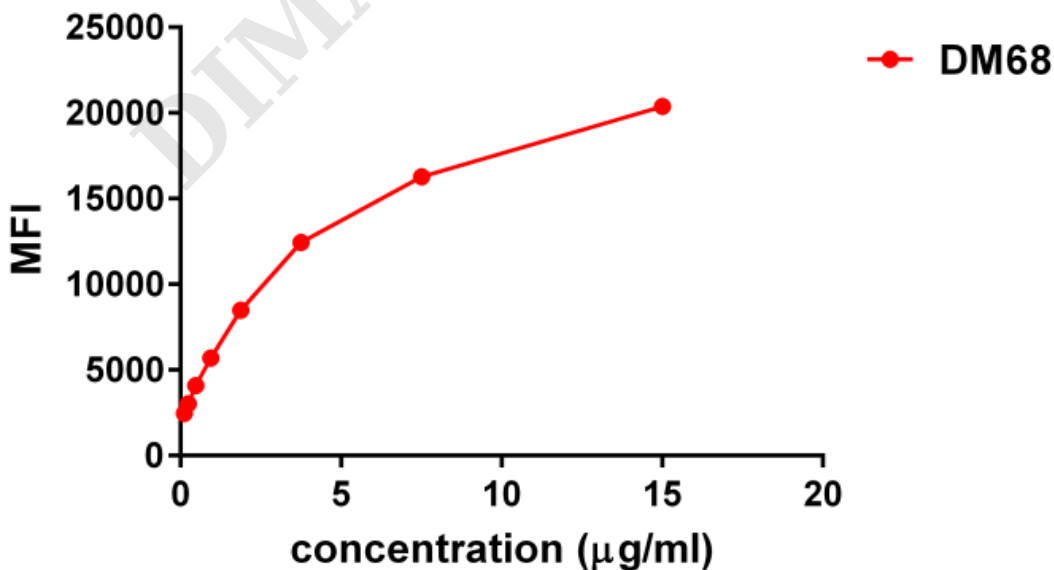


Figure 3. Flow cytometry data of serially titrated Rabbit anti-4-1BB Ligand monoclonal antibody (**clone: DM68**) on Raji cells. The Y-axis represents the mean fluorescence intensity (MFI) while the X-axis represents the concentration of IgG used.

DIMABIO CONFIDENTIAL

