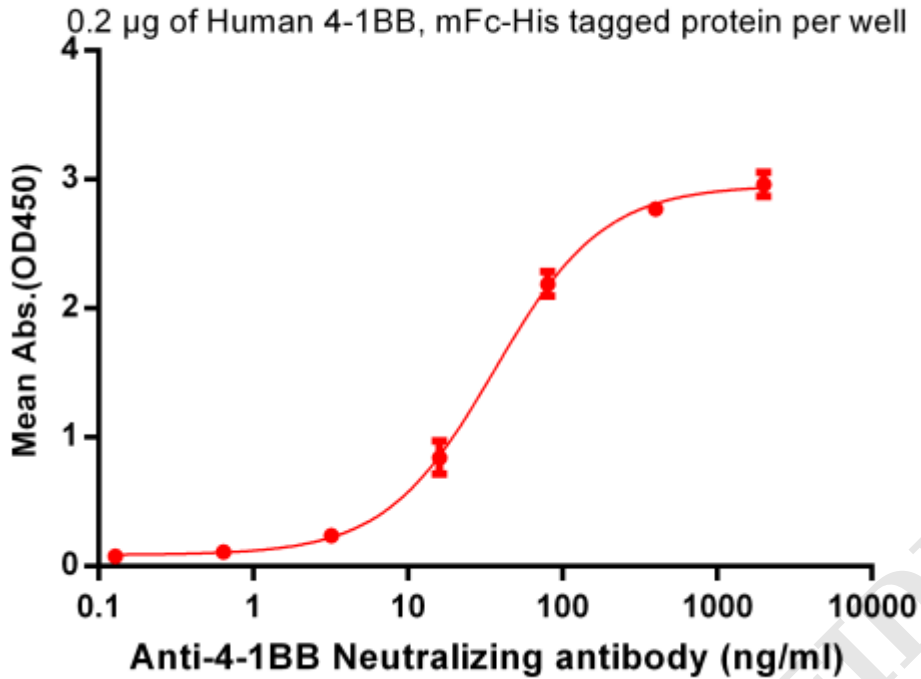


**PRODUCT INFORMATION**

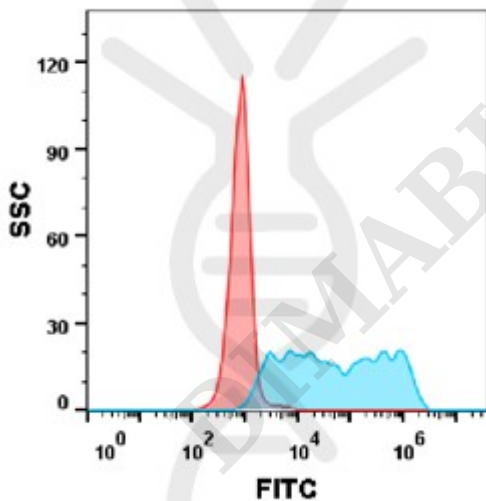
<b>Common Name</b>	PF-05082566, PF-2566
<b>Synonyms</b>	TNFRSF9;4-1BB;CD137;CDw137;ILA
<b>Applications</b>	ELISA; Flow Cyt
<b>Recommended Dilutions</b>	ELISA 1:5000-10000
<b>Formulation &amp; Reconstitution</b>	Lyophilized from sterile PBS, pH 7.4. Normally 5% - 8% trehalose is added as protectants before lyophilization. Please see Certificate of Analysis for specific instructions of reconstitution.
<b>Host Species</b>	Homo sapiens
<b>IgG type</b>	IgG2
<b>Reactivity</b>	Human
<b>Target</b>	4-1BB
<b>Uniprot ID</b>	Q07011
<b>Description</b>	Anti-4-1BB (utomilumab biosimilar) mAb
<b>Delivery</b>	In Stock
<b>Storage &amp; Shipping</b>	Store at -20°C to -80°C for 12 months in lyophilized form. After reconstitution, if not intended for use within a month, aliquot and store at -80°C (Avoid repeated freezing and thawing). Lyophilized proteins are shipped at ambient temperature.
<b>Background</b>	Research grade biosimilar. Not for use in therapeutic or diagnostic procedures for humans or animals.
<b>Usage</b>	Research use only



## Anti-4-1BB (utomilumab biosimilar) mAb ELISA



**Figure 1.** ELISA plate pre-coated by 2  $\mu$ g/ml (100  $\mu$ l/well) Human 4-1BB, mFc-His tagged protein ([getskuurl sku="PME100011"]) can bind Anti-4-1BB Neutralizing antibody (BME100037) in a linear range of 3.2-400 ng/ml.



**Figure 2.** Flow cytometry analysis with Anti-4-1BB (utomilumab ) on Expi293 cells transfected with human 4-1BB(Blue histogram) or Expi293 transfected with irrelevant protein (Red histogram).

