

**PRODUCT INFORMATION**

<b>Clone ID</b>	DMC481
<b>Target</b>	ADGRE1
<b>Synonyms</b>	EMR1; TM7LN3
<b>Host Species</b>	Rabbit
<b>Description</b>	Anti-ADGRE1 antibody(DMC481); IgG1 Chimeric mAb
<b>Delivery</b>	In Stock
<b>Uniprot ID</b>	Q14246
<b>IgG type</b>	Rabbit/Human Fc chimeric IgG1
<b>Clonality</b>	Monoclonal
<b>Reactivity</b>	Human
<b>Applications</b>	Flow Cyt
<b>Recommended Dilutions</b>	Flow Cyt 1:100
<b>Purification</b>	Purified from cell culture supernatant by affinity chromatography
<b>Formulation &amp; Reconstitution</b>	Lyophilized from sterile PBS, pH 7.4. Normally 5 % - 8% trehalose is added as protectants before lyophilization. Please see Certificate of Analysis for specific instructions of reconstitution.
<b>Storage &amp; Shipping</b>	Store at -20°C to -80°C for 12 months in lyophilized form. After reconstitution, if not intended for use within a month, aliquot and store at -80°C (Avoid repeated freezing and thawing). Lyophilized proteins are shipped at ambient temperature.
<b>Background</b>	This gene encodes a protein that has a domain resembling seven transmembrane G protein-coupled hormone receptors (7TM receptors) at its C-terminus. The N-terminus of the encoded protein has six EGF-like modules; separated from the transmembrane segments by a serine;threonine-rich domain; a feature reminiscent of mucin-like; single-span; integral membrane glycoproteins with adhesive properties. Multiple alternatively spliced transcript variants encoding different isoforms have been found for this gene. [provided by RefSeq; Jan 2012]
<b>Usage</b>	Research use only
<b>Conjugate</b>	Unconjugated
<b>DIMA Disclaimer</b>	All DIMA recombinant antibodies are genuinely generated by DIMA Biotech. They are all under patent application. Any protein sequencing or reverse engineering attempt is prohibited. We are actively scrutinizing all patent application to ensure no IP infringement.



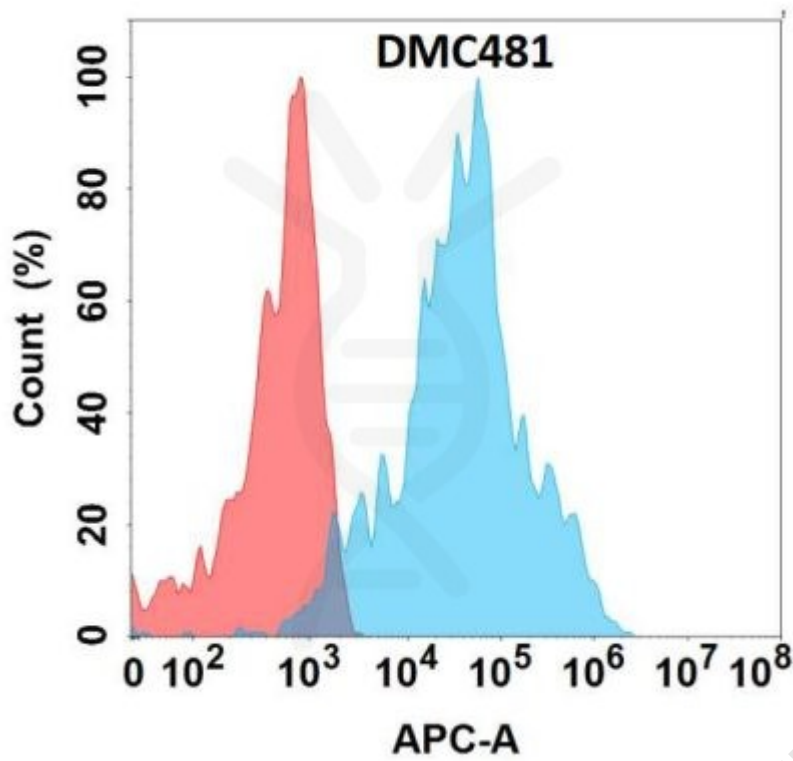


Figure 1. Flow cytometry analysis with Anti-ADGRE1 (DMC481) on Expi293 cells transfected with human ADGRE1 (Blue histogram) or Expi293 transfected with irrelevant protein (Red histogram).

DIMABIO CONFIDENTIAL

