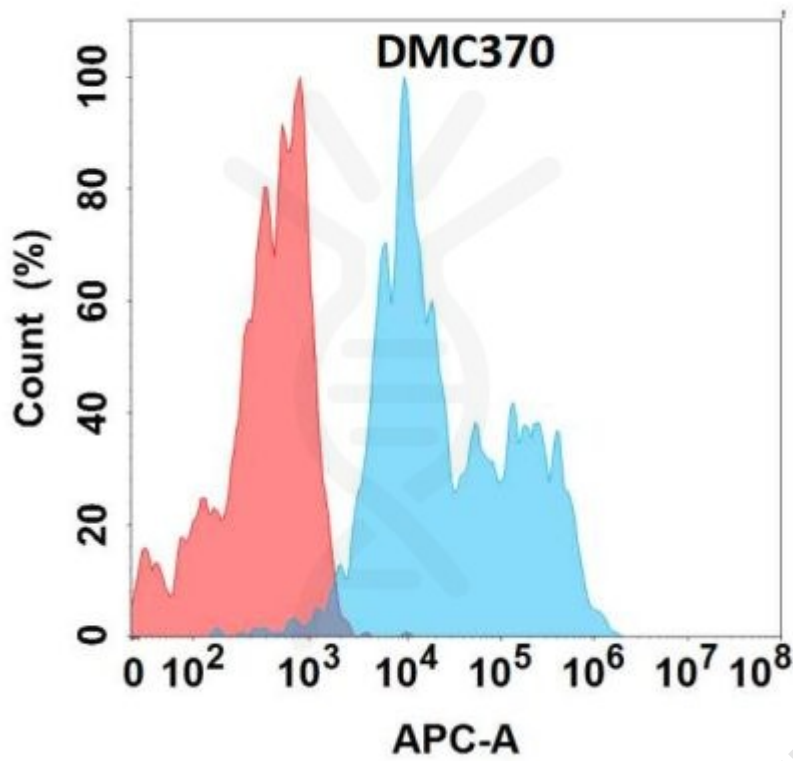


**PRODUCT INFORMATION**

<b>Clone ID</b>	DMC370
<b>Target</b>	ADGRE2
<b>Synonyms</b>	Adhesion G protein-coupled receptor E2;EGF-like module receptor 2;EGF-like module-containing mucin-like hormone receptor-like 2;CD312
<b>Host Species</b>	Rabbit
<b>Description</b>	Anti-ADGRE2 antibody(DMC370); IgG1 Chimeric mAb
<b>Delivery</b>	In Stock
<b>Uniprot ID</b>	Q9UHX3
<b>IgG type</b>	Rabbit/Human Fc chimeric IgG1
<b>Clonality</b>	Monoclonal
<b>Reactivity</b>	Human
<b>Applications</b>	Flow Cyt
<b>Recommended Dilutions</b>	Flow Cyt 1:100
<b>Purification</b>	Purified from cell culture supernatant by affinity chromatography
<b>Formulation &amp; Reconstitution</b>	Lyophilized from sterile PBS, pH 7.4. Normally 5 % - 8% trehalose is added as protectants before lyophilization. Please see Certificate of Analysis for specific instructions of reconstitution.
<b>Storage &amp; Shipping</b>	Store at -20°C to -80°C for 12 months in lyophilized form. After reconstitution, if not intended for use within a month, aliquot and store at -80°C (Avoid repeated freezing and thawing). Lyophilized proteins are shipped at ambient temperature.
<b>Background</b>	This gene encodes a member of the class B seven-span transmembrane (TM7) subfamily of G-protein coupled receptors. These proteins are characterized by an extended extracellular region with a variable number of N-terminal epidermal growth factor-like domains coupled to a TM7 domain via a mucin-like spacer domain. The encoded protein is expressed mainly in myeloid cells where it promotes cell-cell adhesion through interaction with chondroitin sulfate chains. This gene is situated in a cluster of related genes on chromosome 19. Alternatively spliced transcript variants encoding multiple isoforms have been observed for this gene.
<b>Usage</b>	Research use only
<b>Conjugate</b>	Unconjugated
<b>DIMA Disclaimer</b>	All DIMA recombinant antibodies are genuinely generated by DIMA Biotech. They are all under patent application. Any protein sequencing or reverse engineering attempt is prohibited. We are actively scrutinizing all patent application to ensure no IP infringement.





**Figure 1.** Flow cytometry analysis with Anti-ADGRE2 (DMC370) on Expi293 cells transfected with human ADGRE2 (Blue histogram) or Expi293 transfected with irrelevant protein (Red histogram).

