

PRODUCT INFORMATION

Clone ID	DMC686
Target	ALPP
Synonyms	ALP; ALPI; IAP; PALP; PLAP; PLAP-1
Host Species	Rabbit
Description	Anti-ALPP antibody(DMC686); IgG1 Chimeric mAb
Delivery	In Stock
Uniprot ID	P05187
IgG type	Rabbit/Human Fc chimeric IgG1
Clonality	Monoclonal
Reactivity	Human
Applications	Flow Cyt
Recommended Dilutions	Flow Cyt 1:100
Purification	Purified from cell culture supernatant by affinity chromatography
Formulation & Reconstitution	Lyophilized from sterile PBS, pH 7.4. Normally 5 % - 8% trehalose is added as protectants before lyophilization. Please see Certificate of Analysis for specific instructions of reconstitution.
Storage & Shipping	Store at -20°C to -80°C for 12 months in lyophilized form. After reconstitution, if not intended for use within a month, aliquot and store at -80°C (Avoid repeated freezing and thawing). Lyophilized proteins are shipped at ambient temperature.
Background	The protein encoded by this gene is an alkaline phosphatase; a metalloenzyme that catalyzes the hydrolysis of phosphoric acid monoesters. It belongs to a multigene family composed of four alkaline phosphatase isoenzymes. The enzyme functions as a homodimer and has a catalytic site containing one magnesium and two zinc ions; which are required for its enzymatic function. One of the main sources of this enzyme is the liver; and thus; it's one of several indicators of liver injury in different clinical conditions. In pregnant women; this protein is primarily expressed in placental and endometrial tissue; however; strong ectopic expression has been detected in ovarian adenocarcinoma; serous cystadenocarcinoma; and other ovarian cancer cells. [provided by RefSeq; Aug 2020]
Usage	Research use only



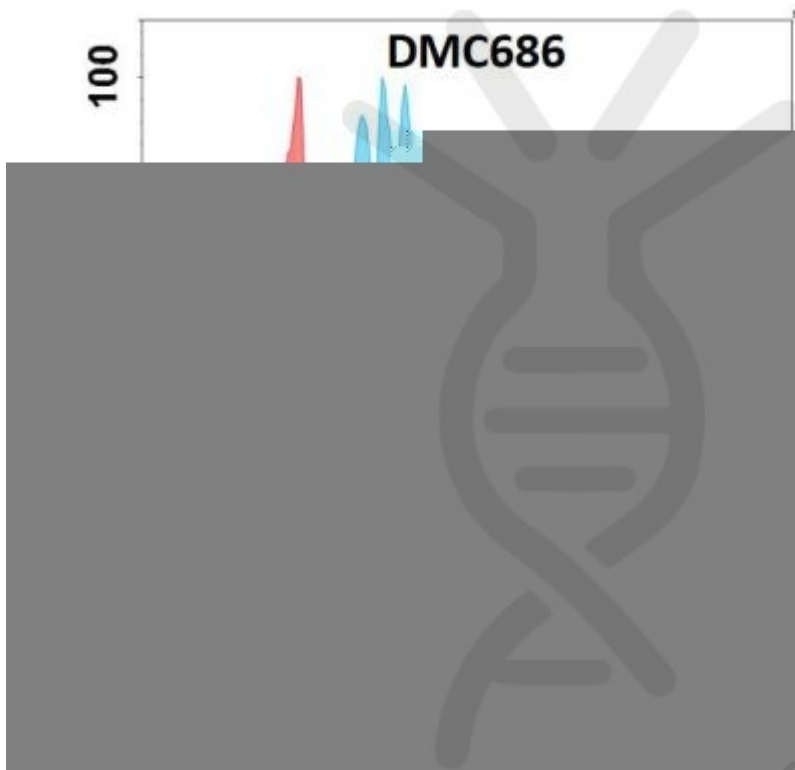


Figure 1. Flow cytometry analysis with Anti-ALPP(DMC686) on Expi293 cells transfected with human ALPP(Blue histogram) or Expi293 transfected with irrelevant protein (Red histogram).

DIMA BIO CONFIDENTIAL

