

**PRODUCT INFORMATION**

<b>Common Name</b>	HuMax-AXL-ADC
<b>Synonyms</b>	AXL;UFO
<b>Applications</b>	ELISA; Flow Cyt
<b>Recommended Dilutions</b>	ELISA 1:5000-10000; Flow Cyt 1:100
<b>Formulation &amp; Reconstitution</b>	Lyophilized from sterile PBS, pH 7.4. Normally 5% - 8% trehalose is added as protectants before lyophilization. Please see Certificate of Analysis for specific instructions of reconstitution.
<b>Host Species</b>	Homo sapiens
<b>IgG type</b>	IgG1
<b>Reactivity</b>	Human
<b>Target</b>	AXL
<b>Uniprot ID</b>	P30530
<b>Description</b>	Anti-AXL (enapotamab biosimilar) mAb
<b>Delivery</b>	In Stock
<b>Storage &amp; Shipping</b>	Store at -20°C to -80°C for 12 months in lyophilized form. After reconstitution, if not intended for use within a month, aliquot and store at -80°C (Avoid repeated freezing and thawing). Lyophilized proteins are shipped at ambient temperature.
<b>Background</b>	Research grade biosimilar. Not for use in therapeutic or diagnostic procedures for humans or animals.
<b>Usage</b>	Research use only
<b>Conjugate</b>	Unconjugated



## Anti-AXL (enapotamab biosimilar) mAb ELISA

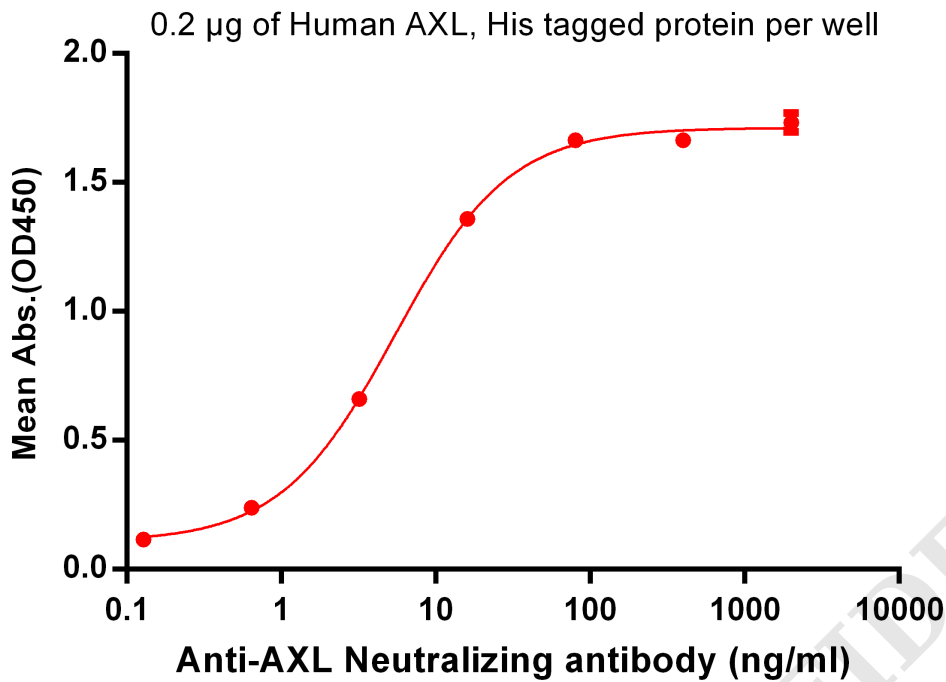


Figure 1. ELISA plate pre-coated by 2  $\mu$ g/ml (100  $\mu$ l/well) Human AXL, His tagged protein PME100070 can bind Anti-AXL Neutralizing antibody in a linear range of 0.64-80 ng/ml.

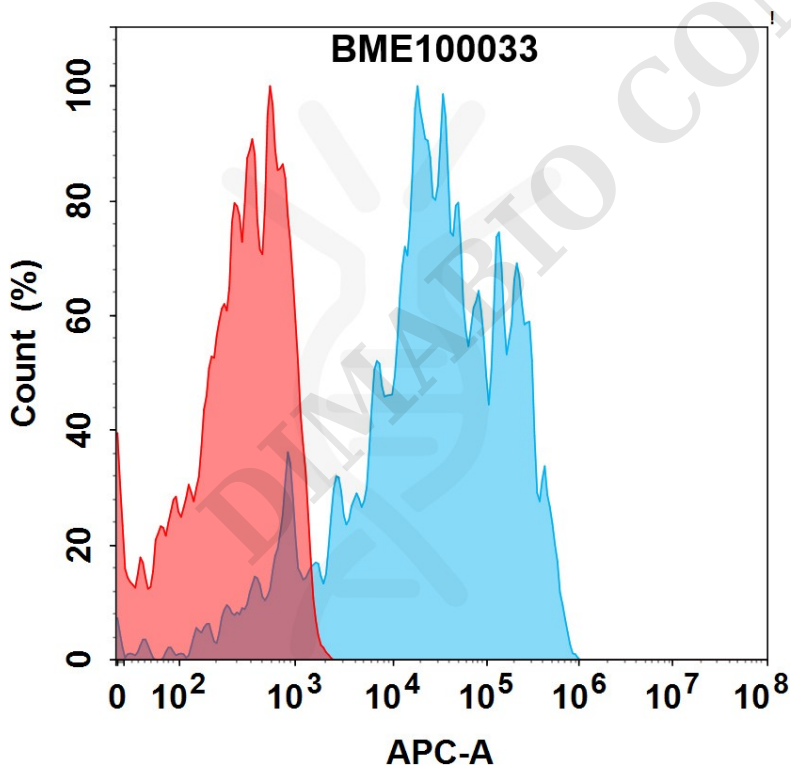
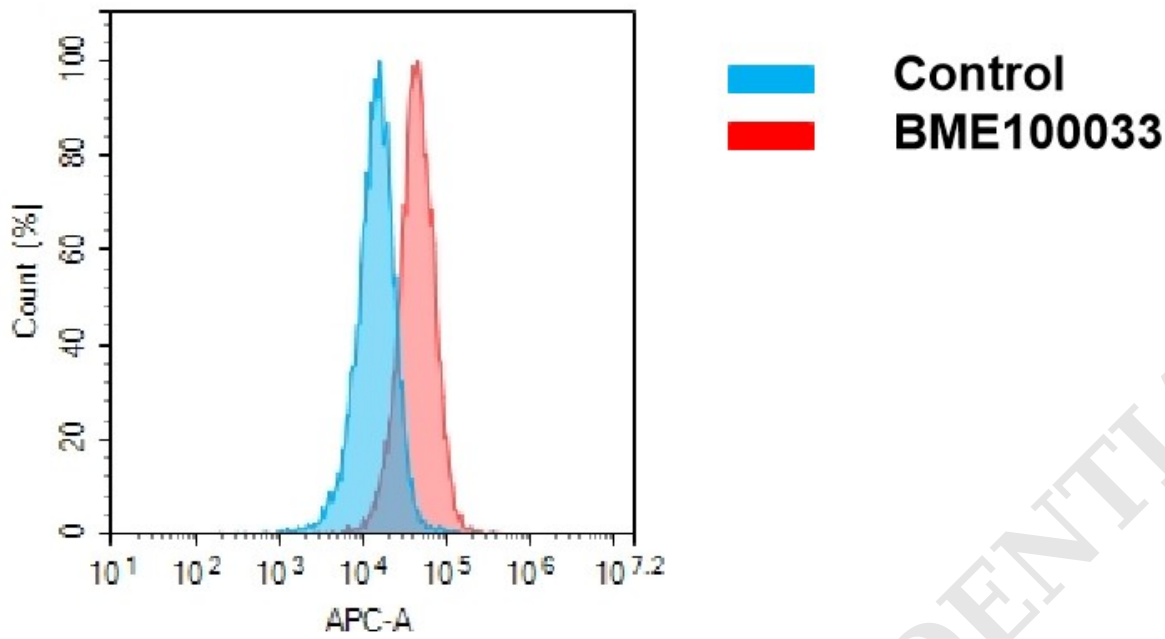


Figure 2. Flow cytometry analysis with 1  $\mu$ g/mL Anti-AXL(enapotamab biosimilar) mAb (BME100033) on Expi293 cells transfected with Human AXL protein (Blue histogram) or Expi293 transfected with irrelevant protein (Red histogram).





**A**

Figure 3. Flow cytometry analysis of antigen binding of anti-human AXL mAb(BME100033). (A) A clear peak shift of BME100033 was seen compared to the control when incubated with AXL-expressing Hela cells, indicating strong binding of BME100033 to AXL. Antibodies were incubated at 2 µg/mL.

DIMABIO CONFIDENTIAL

