

**PRODUCT INFORMATION**

|   |   |
|---|---|
| <b>Common Name</b>                      | TAA06   |
| <b>Synonyms</b>                         | B7H3, CD276, B7 homolog 3   |
| <b>Applications</b>                     | ELISA, Flow Cyt   |
| <b>Recommended Dilutions</b>            | ELISA 1:5000-10000, Flow Cyt 1:100  |
| <b>Formulation &amp; Reconstitution</b> | Lyophilized from sterile PBS, pH 7.4. Normally 5% - 8% trehalose is added as protectants before lyophilization. Please see Certificate of Analysis for specific instructions.   |
| <b>Host Species</b>                     | Humanized   |
| <b>IgG type</b>                         | IgG1  |
| <b>Reactivity</b>                       | Human   |
| <b>Target</b>                           | B7-H3   |
| <b>Uniprot ID</b>                       | Q5ZPR3  |
| <b>Description</b>                      | Anti-B7-H3 (TAA06 biosimilar) mAb   |
| <b>Delivery</b>                         | In Stock  |
| <b>Storage &amp; Shipping</b>           | Store at -20°C to -80°C for 12 months in lyophilized form. After reconstitution, if not intended for use within a month, aliquot and store at -80°C (Avoid repeated freezing and thawing). Lyophilized antibodies are shipped at ambient temperature. |
| <b>Background</b>                       | Research grade biosimilar. Not for use in therapeutic or diagnostic procedures for humans or animals.   |
| <b>Usage</b>                            | Research use only   |
| <b>Conjugate</b>                        | Unconjugated  |

DIMA BIO CONFIDENTIAL



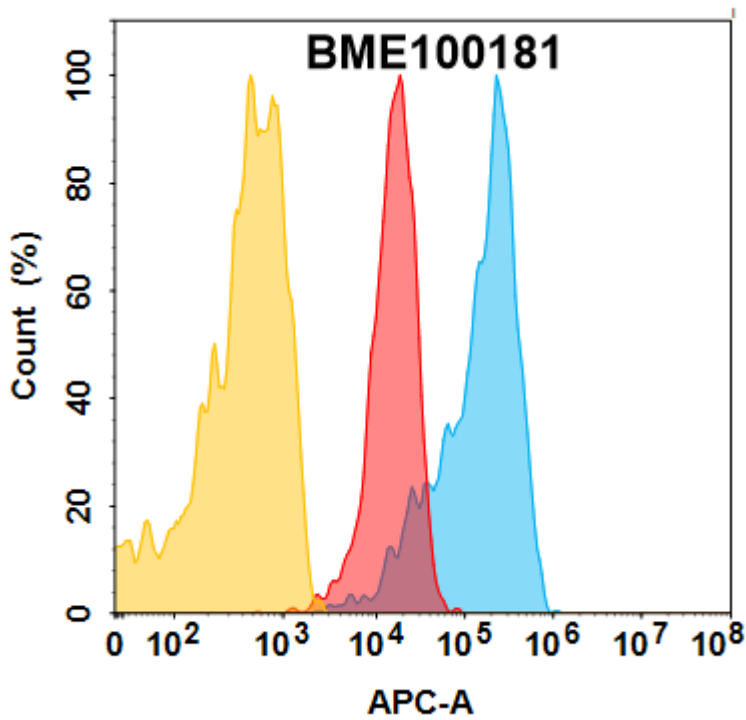


Figure 1. B7-H3 protein is highly expressed on the surface of Expi293 cell membrane. Flow cytometry analysis with 1 $\mu$ g/mL Anti-B7-H3 (TAA06 biosimilar) mAb (BME100181) on Expi293 cells transfected with human B7-H3 (Blue histogram) or Expi293 transfected with irrelevant protein (Red histogram), and Isotype antibody on Expi293 transfected with irrelevant protein (Orange histogram).

### Anti-B7-H3 (TAA06 biosimilar) mAb ELISA

0.2  $\mu$ g of Human B7-H3, mFc-His tagged protein per well

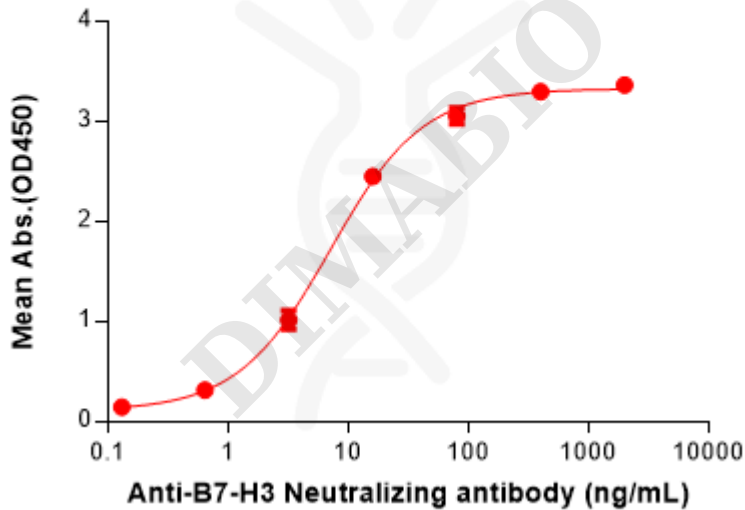


Figure 2. ELISA plate pre-coated by 2  $\mu$ g/mL (100  $\mu$ L/well) Human B7-H3 Protein, mFc-His Tag(PME100012) can bind Anti-B7-H3 (TAA06 biosimilar) mAb(BME100181) in a linear range of 0.64–16 ng/mL.

