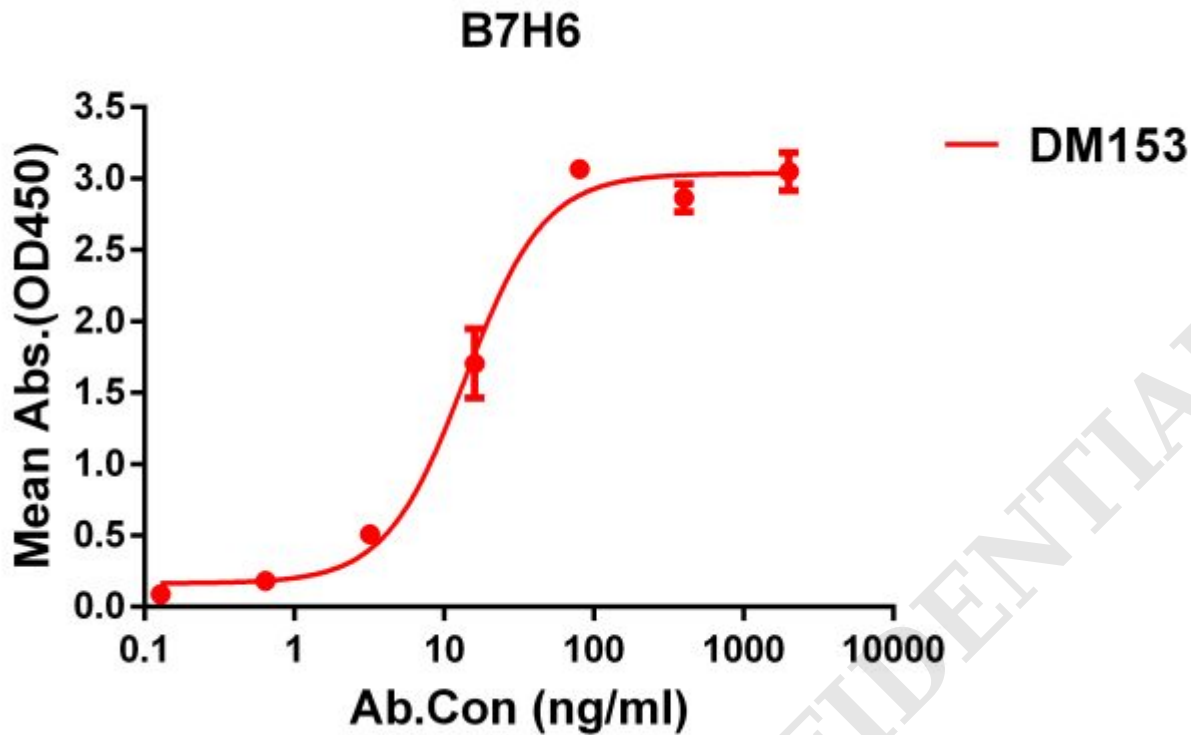


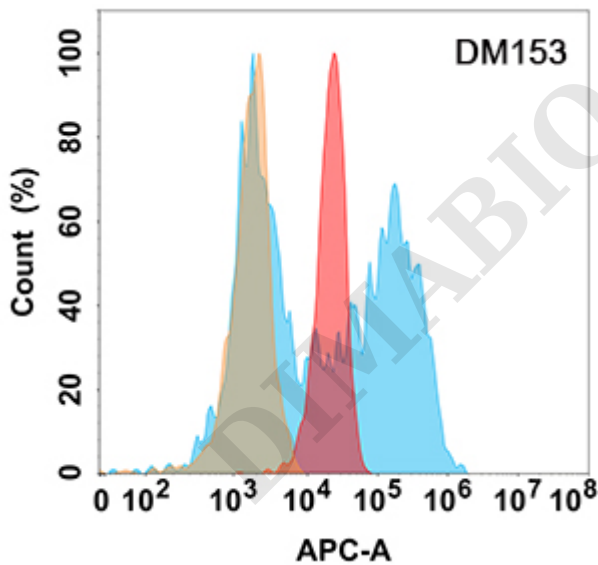
**PRODUCT INFORMATION**

<b>Clone ID</b>	DM153
<b>Target</b>	B7-H6
<b>Synonyms</b>	B7-H6;NCR3LG1;B7 Homolog 6
<b>Host Species</b>	Rabbit
<b>Description</b>	Anti-B7-H6 antibody(DM153); Rabbit mAb
<b>Delivery</b>	In Stock
<b>Uniprot ID</b>	Q68D85
<b>IgG type</b>	Rabbit IgG
<b>Clonality</b>	Monoclonal
<b>Reactivity</b>	Human
<b>Applications</b>	ELISA; Flow Cyt
<b>Recommended Dilutions</b>	ELISA 1:5000-10000; Flow Cyt 1:100
<b>Purification</b>	Purified from cell culture supernatant by affinity chromatography
<b>Formulation &amp; Reconstitution</b>	Lyophilized from sterile PBS, pH 7.4. Normally 5% - 8% trehalose is added as protectants before lyophilization. Please see Certificate of Analysis for specific instructions of reconstitution. Store at -20°C to -80°C for 12 months in lyophilized form. After reconstitution, if not intended for use within a month, aliquot and store at -80°C (Avoid repeated freezing and thawing). Lyophilized proteins are shipped at ambient temperature.
<b>Storage &amp; Shipping</b>	
<b>Background</b>	B7-H6 belongs to the B7 family (see MIM 605402) and is selectively expressed on tumor cells. Interaction of B7H6 with NKp30 (NCR3; MIM 611550) results in natural killer (NK) cell activation and cytotoxicity.
<b>Usage</b>	Research use only
<b>Conjugate</b>	Unconjugated





**Figure 1.** ELISA plate pre-coated by 1  $\mu\text{g/ml}$  (100  $\mu\text{l/well}$ ) Human B7H6 protein, His tagged protein ([getskuurl sku="PME100510"]) can bind Rabbit anti-B7H6 monoclonal antibody(clone: **DM153**) in a linear range of 5-100 ng/ml.



**Figure 2.** B7H6 protein is highly expressed on the surface of Expi293 cell membrane. Flow cytometry analysis with Anti-B7H6 (DM153) on Expi293 cells transfected with human B7H6 (Blue histogram) or Expi293 transfected with irrelevant protein (Red histogram), and Isotype antibody on Expi293 transfected with irrelevant protein (Orange histogram).

