

PRODUCT INFORMATION

Clone ID	2D5
Target	B7H7
Synonyms	HHLA2
Host Species	Rabbit
Description	Anti-B7H7 antibody(2D5), IgG1 Chimeric mAb
Delivery	In Stock
Uniprot ID	Q9UM44
IgG type	Rabbit/Human Fc chimeric IgG1
Clonality	Monoclonal
Reactivity	Human
Applications	Flow Cyt
Recommended Dilutions	Flow Cyt 1/100
Purification	Purified from cell culture supernatant by affinity chromatography
Formulation & Reconstitution	Lyophilized from sterile PBS, pH 7.4. Normally 5% - 8% trehalose is added as protectants before lyophilization. Please see Certificate of Analysis for specific instructions of reconstitution.
Storage & Shipping	Store at -20°C to -80°C for 12 months in lyophilized form. After reconstitution, if not intended for use within a month, aliquot and store at -80°C (Avoid repeated freezing and thawing). Lyophilized proteins are shipped at ambient temperature.
Background	This gene encodes a protein ligand found on the surface of monocytes. The encoded protein is thought to regulate cell-mediated immunity by binding to a receptor on T lymphocytes and inhibiting the proliferation of these cells. Alternate splicing results in multiple transcript variants. [provided by RefSeq, Sep 2013]
Usage	Research use only



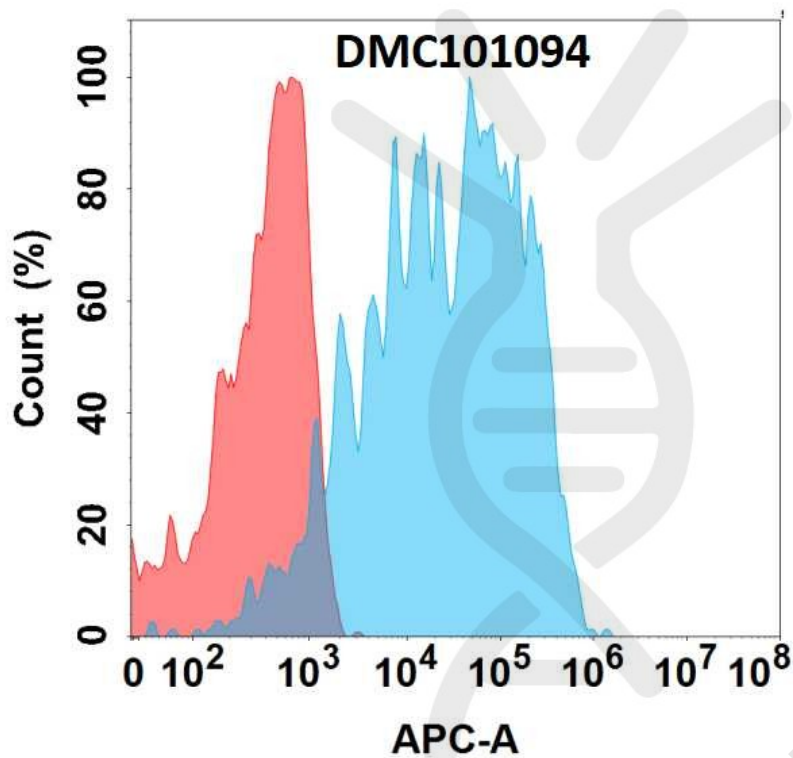


Figure 1. Flow cytometry analysis with 1µg/mL Anti-B7H7 (2D5) mAb on Expi293 cells transfected with human B7H7 (Blue histogram) or Expi293 transfected with irrelevant protein (Red histogram).

DIMA BIO CONFIDENTIAL

