

PRODUCT INFORMATION

| | |
|---|--|
| Clone ID | DM182 |
| Target | BTLA |
| Synonyms | BTLA; CD272 |
| Host Species | Rabbit |
| Description | Anti-BTLA antibody(DM182); Rabbit mAb |
| Delivery | In Stock |
| Uniprot ID | Q7Z6A9 |
| IgG type | Rabbit IgG |
| Clonality | Monoclonal |
| Reactivity | Human |
| Applications | ELISA; Flow Cyt |
| Recommended Dilutions | ELISA 1:5000-10000; Flow Cyt 1:100 |
| Purification | Purified from cell culture supernatant by affinity chromatography |
| Formulation & Reconstitution | Lyophilized from sterile PBS, pH 7.4. Normally 5% - 8% trehalose is added as protectants before lyophilization. Please see Certificate of Analysis for specific instructions of reconstitution. |
| Storage & Shipping | Store at -20°C to -80°C for 12 months in lyophilized form. After reconstitution, if not intended for use within a month, aliquot and store at -80°C (Avoid repeated freezing and thawing). Lyophilized proteins are shipped at ambient temperature. |
| Background | This gene encodes a member of the immunoglobulin superfamily. The encoded protein contains a single immunoglobulin (Ig) domain and is a receptor that relays inhibitory signals to suppress the immune response. Alternative splicing results in multiple transcript variants. Polymorphisms in this gene have been associated with an increased risk of rheumatoid arthritis. |
| Usage | Research use only |
| Conjugate | Unconjugated |



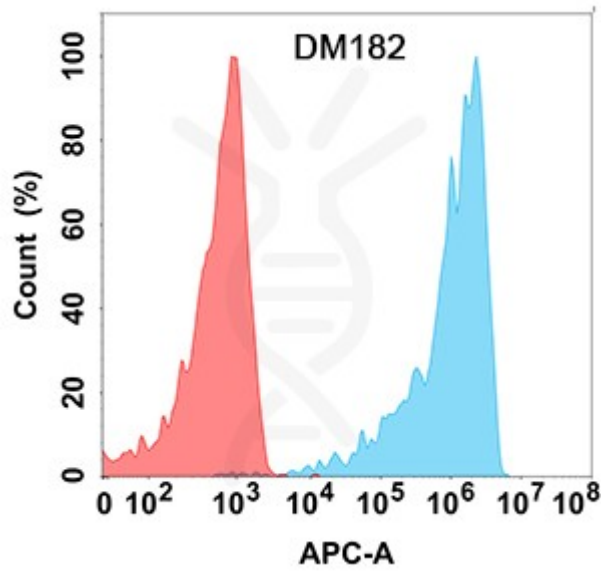


Figure 1. Flow cytometry analysis with Anti-BTLA (DM182) on Expi293 cells transfected with human BTLA (Blue histogram) or Expi293 transfected with irrelevant protein (Red histogram).

DIMABIO CONFIDENTIAL

