

**PRODUCT INFORMATION**

<b>Common Name</b>	4F12
<b>Synonyms</b>	PD1, PDCD1, CD279, SLEB2, hPD-1, hPD-I, hSLE1
<b>Applications</b>	ELISA, Flow Cyt
<b>Recommended Dilutions</b>	ELISA 1:5000-10000, Flow Cyt 1:100
<b>Formulation &amp; Reconstitution</b>	Lyophilized from sterile PBS, pH 7.4. Normally 5% - 8% trehalose is added as protectants before lyophilization. Please see Certificate of Analysis for specific instructions of reconstitution.
<b>Host Species</b>	Chimeric Rabbit
<b>IgG type</b>	IgG
<b>Reactivity</b>	Canine
<b>Target</b>	PD-1
<b>Uniprot ID</b>	NP_001301026.1
<b>Description</b>	Anti-Canine PD-1(INTERVET 4F12) mAb
<b>Delivery</b>	In Stock
<b>Storage &amp; Shipping</b>	Store at -20°C to -80°C for 12 months in lyophilized form. After reconstitution, if not intended for use within a month, aliquot and store at -80°C (Avoid repeated freezing and thawing). Lyophilized antibodies are shipped at ambient temperature.
<b>Background</b>	Research grade biosimilar. Not for use in therapeutic or diagnostic procedures for humans or animals.
<b>Usage</b>	Research use only



### Anti-Canine PD-1(INTERVET 4F12) mAb ELISA

0.2  $\mu$ g of Canine PD-1, His tagged protein per well

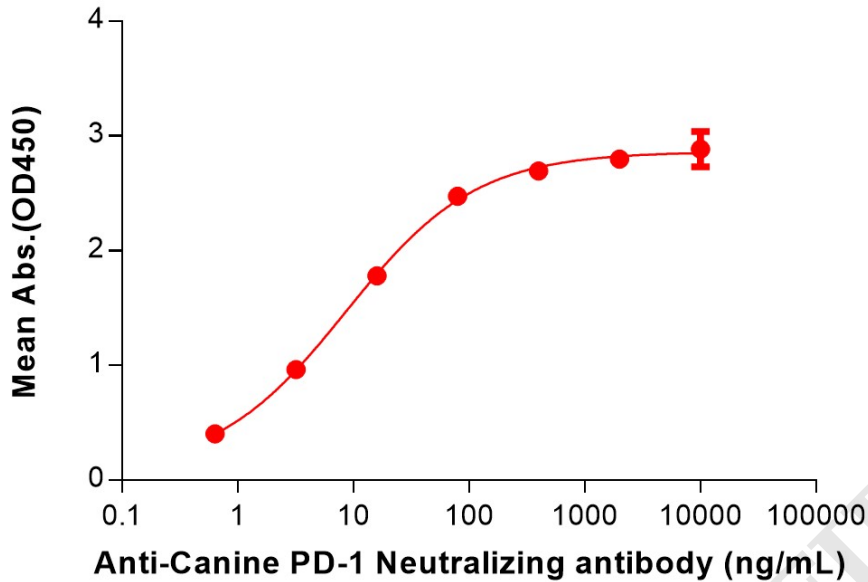


Figure 1. ELISA plate pre-coated by 2  $\mu$ g/mL (100  $\mu$ L/well) Canine PD-1 Protein, His Tag (PME-D100005) can bind Anti-Canine PD-1(INTERVET 4F12) mAb (BME100202) in a linear range of 0.64-80 ng/mL.

### Anti-Canine PD-1(INTERVET 4F12) mAb ELISA

0.2  $\mu$ g of Canine PD-1, hFc tagged protein per well

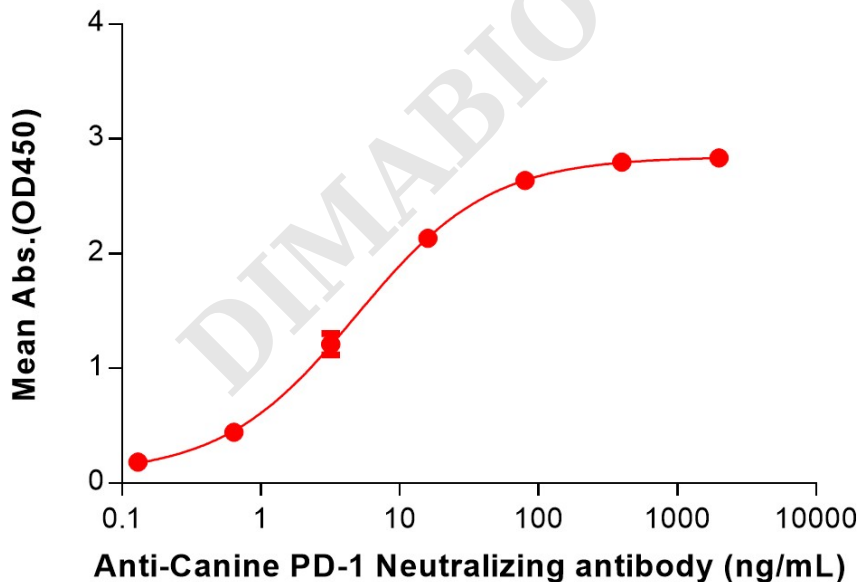


Figure 2. ELISA plate pre-coated by 2  $\mu$ g/mL (100  $\mu$ L/well) Canine PD-1 Protein, hFc Tag (PME-D100008) can bind Anti-Canine PD-1(INTERVET 4F12) mAb (BME100202) in a linear range of 0.64-80 ng/mL.



### Anti-Canine PD-1(INTERVET 4F12) mAb ELISA

0.2  $\mu\text{g}$  of Canine PD-1, mFc tagged protein per well

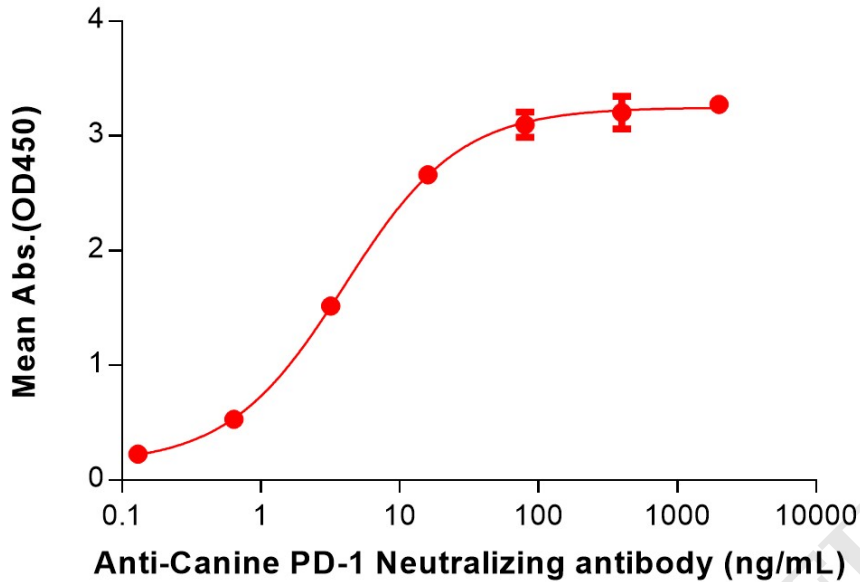


Figure 3. ELISA plate pre-coated by 2  $\mu\text{g}/\text{mL}$  (100  $\mu\text{L}/\text{well}$ ) Canine PD-1 Protein, mFc Tag (PME-D100006) can bind Anti-Canine PD-1(INTERVET 4F12) mAb (BME100202) in a linear range of 0.64–80 ng/mL.

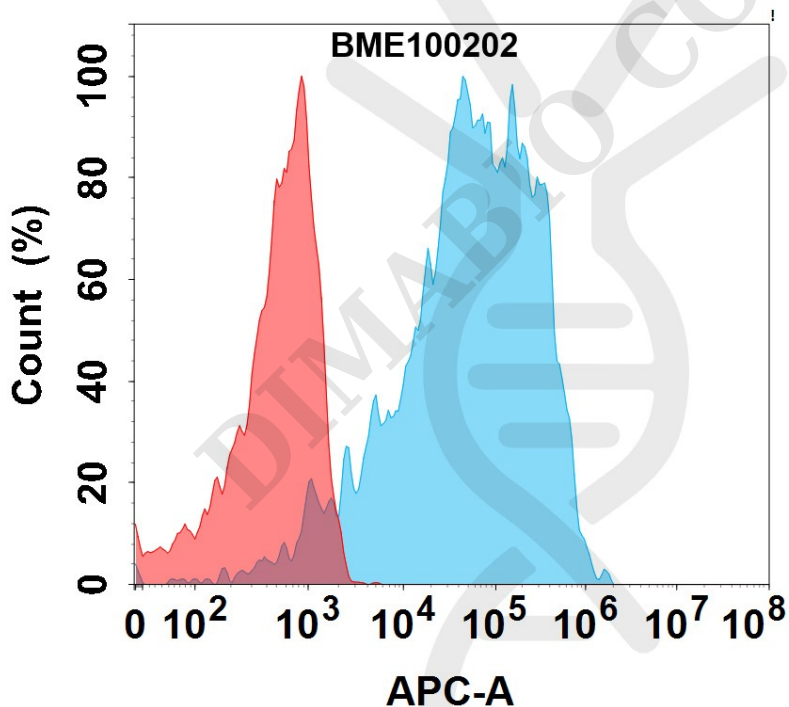


Figure 4. Flow cytometry analysis with 1 $\mu\text{g}/\text{mL}$  Anti-Canine PD-1(INTERVET 4F12) mAb (BME100202) on Expi293 cells transfected with Canine PD-1 protein (Blue histogram) or Expi293 transfected with irrelevant protein (Red histogram).

