

PRODUCT INFORMATION

Clone ID	DMC224
Target	CD112
Synonyms	NECTIN2; HVEB; PRR2; PVRL2; PVRR2
Host Species	Rabbit
Description	Anti-CD112 antibody(DMC224); IgG1 Chimeric mAb
Delivery	In Stock
Uniprot ID	Q92692
IgG type	Rabbit/Human Fc chimeric IgG1
Clonality	Monoclonal
Reactivity	Human
Applications	ELISA; Flow Cyt
Recommended Dilutions	ELISA 1:5000-10000; Flow Cyt 1:100
Purification	Purified from cell culture supernatant by affinity chromatography
Formulation & Reconstitution	Lyophilized from sterile PBS, pH 7.4. Normally 5 % - 8% trehalose is added as protectants before lyophilization. Please see Certificate of Analysis for specific instructions of reconstitution.
Storage & Shipping	Store at -20°C to -80°C for 12 months in lyophilized form. After reconstitution, if not intended for use within a month, aliquot and store at -80°C (Avoid repeated freezing and thawing). Lyophilized proteins are shipped at ambient temperature.
Background	This gene encodes a single-pass type I membrane glycoprotein with two Ig-like C2-type domains and an Ig-like V-type domain. This protein is one of the plasma membrane components of adherens junctions. It also serves as an entry for certain mutant strains of herpes simplex virus and pseudorabies virus; and it is involved in cell to cell spreading of these viruses. Variations in this gene have been associated with differences in the severity of multiple sclerosis. Alternate transcriptional splice variants; encoding different isoforms; have been characterized.
Usage	Research use only



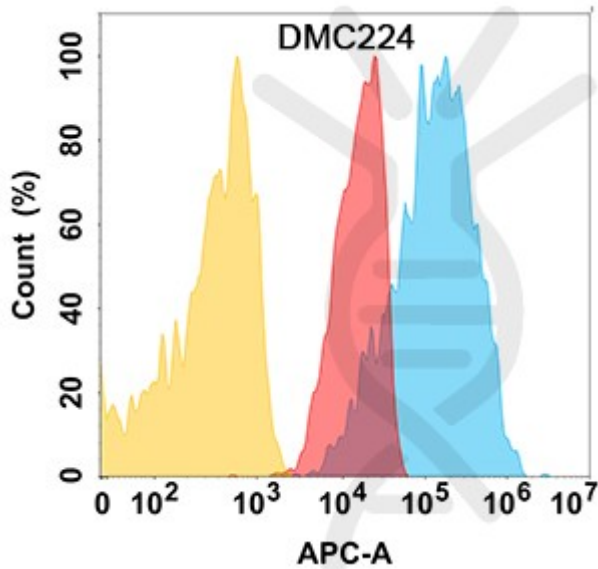


Figure 1. CD112 protein is highly expressed on the surface of Expi293 cell membrane. Flow cytometry analysis with Anti-CD112 (DMC224) on Expi293 cells transfected with human CD112 (Blue histogram) or Expi293 transfected with irrelevant protein (Red histogram), and Isotype antibody on Expi293 transfected with irrelevant protein (Orange histogram).

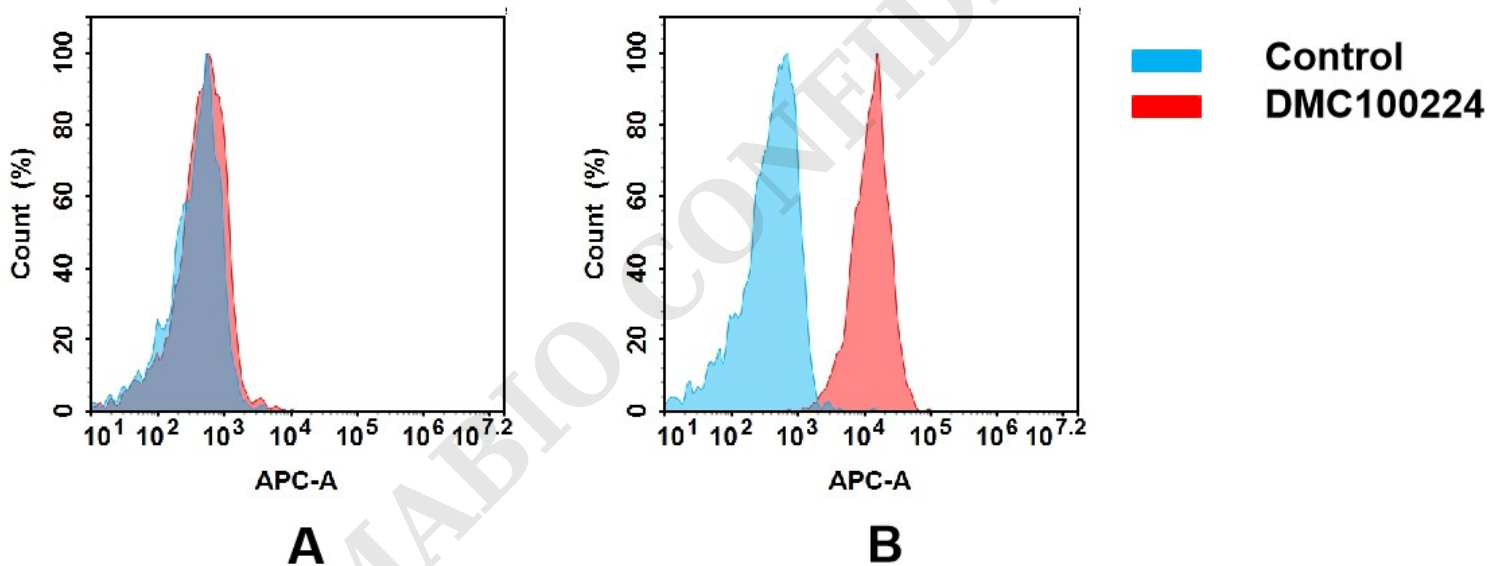


Figure 2. Flow cytometry analysis of antigen binding of anti-human CD112 mAb(DMC100224).

(A) DMC100224 does not bind to MM.1S cells that do not express CD112.

(B) A clear peak shift of DMC100224 was seen compared to the control when incubated with CD112-expressing MCF-7 cells, indicating strong binding of DMC100224 to CD112. Antibodies were incubated at 5 μ g/mL.



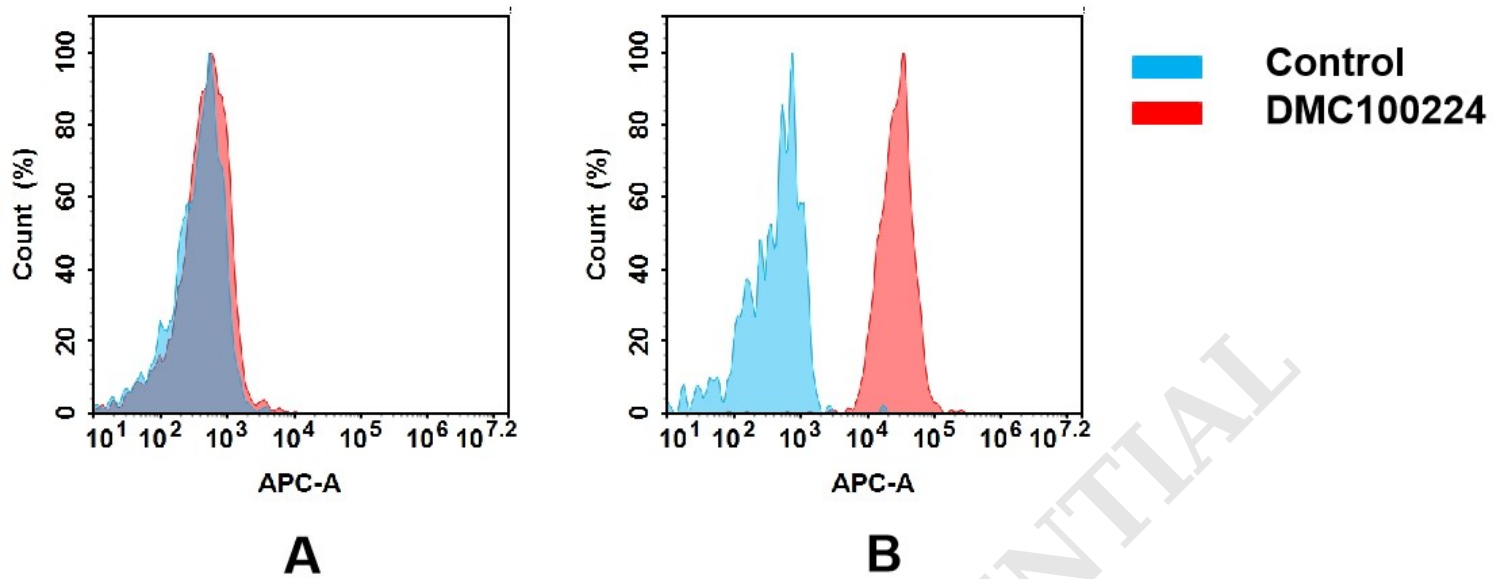


Figure 3. Flow cytometry analysis of antigen binding of anti-human CD112 mAb(DMC100224).

(A) DMC100224 does not bind to MM.1S cells that do not express CD112.

(B) A clear peak shift of DMC100224 was seen compared to the control when incubated with CD112-expressing Huh7 cells, indicating strong binding of DMC100224 to CD112. Antibodies were incubated at 5 µg/mL.

DIMABIO CONFIDENTIAL

