

PRODUCT INFORMATION

Clone ID	DM33
Target	CD123
Synonyms	IL3R; IL3RA; IL-3Ra; IL-3R-alpha; IL3RAY; IL3RX; IL3RY; CD123 antigen; CD123; hIL3Ra; hIL-3Ra; MGC34174; IL-3 R alpha
Host Species	Rabbit
Description	Anti-CD123 antibody(DM33); Rabbit mAb
Delivery	In Stock
Uniprot ID	P26951
IgG type	Rabbit IgG
Clonality	Monoclonal
Reactivity	Human
Applications	ELISA; Flow Cyt
Recommended Dilutions	ELISA 1:5000-10000; Flow Cyt 1:100
Purification	Purified from cell culture supernatant by affinity chromatography
Formulation & Reconstitution	Lyophilized from sterile PBS, pH 7.4. Normally 5% - 8% trehalose is added as protectants before lyophilization. Please see Certificate of Analysis for specific instructions of reconstitution.
Storage & Shipping	Store at -20°C to -80°C for 12 months in lyophilized form. After reconstitution, if not intended for use within a month, aliquot and store at -80°C (Avoid repeated freezing and thawing). Lyophilized proteins are shipped at ambient temperature.
Background	Interleukin 3 receptor alpha (low affinity) (IL3RA); also known as CD123 (Cluster of Differentiation 123) is a 70-kD glycoprotein member of the hematopoietin receptor superfamily. This protein associates with a beta subunit common to the receptors for IL-??
Usage	Research use only
Conjugate	Unconjugated



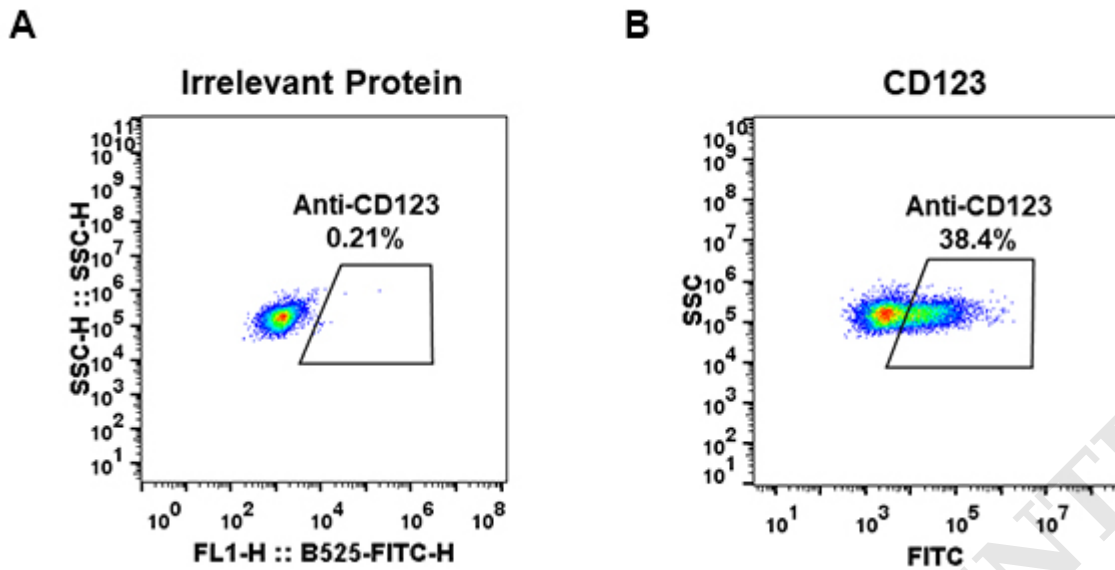


Figure 1. Expi 293 cell line transfected with irrelevant protein (left) and human CD123(right) were surface stained with Rabbit anti-CD123 monoclonal antibody $1\mu\text{g/ml}$ (clone: DM33) followed by Alexa 488-conjugated anti-rabbit IgG secondary antibody.

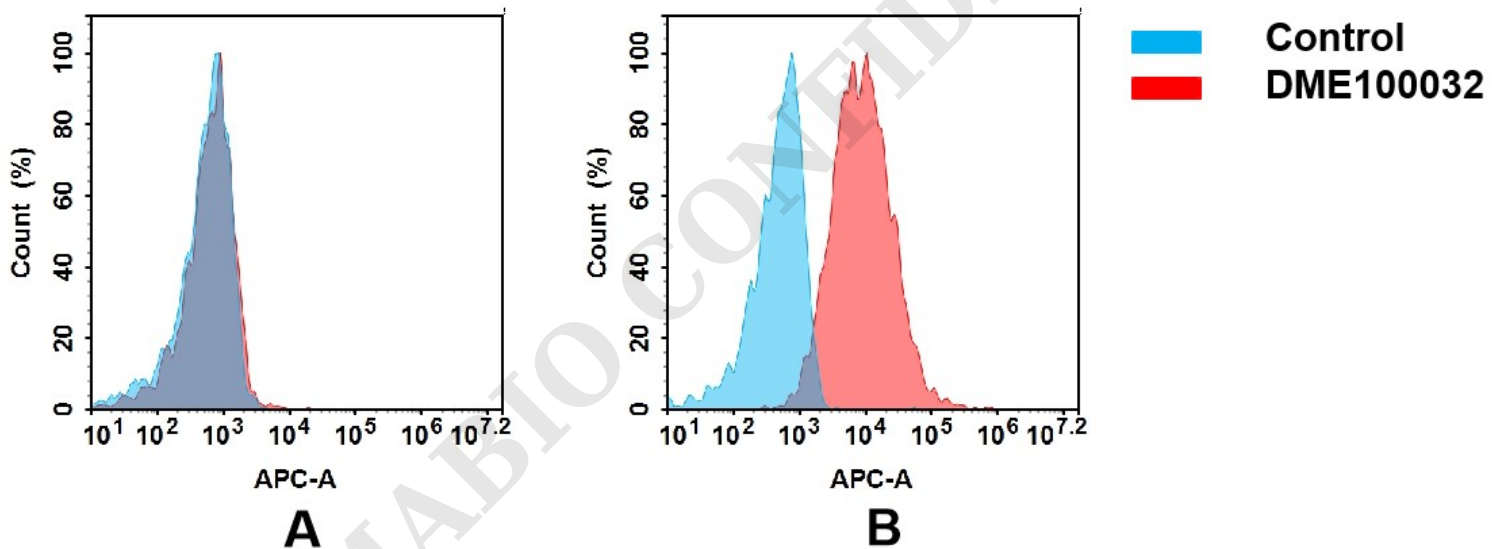


Figure 2. Flow cytometry analysis of antigen binding of rabbit anti-human CD123 mAb(DME100032).

(A) DME100032 does not bind to CHO-S cells that do not express CD123.

(B) A clear peak shift of DME100032 was seen compared to the control when incubated with CD123-expressing THP-1 cells, indicating strong binding of DME100032 to CD123. Antibodies were incubated at $5\mu\text{g/mL}$.

