

PRODUCT INFORMATION

Clone ID	DM45
Target	CD138
Synonyms	SDC1; Syndecan-1; CD138; SYND1; SDC
Host Species	Rabbit
Description	Anti-CD138 antibody(DM45); Rabbit mAb
Delivery	In Stock
Uniprot ID	P18827
IgG type	Rabbit IgG
Clonality	Monoclonal
Reactivity	Human
Applications	ELISA IHC FC
Recommended Dilutions	ELISA 1:5000-10000; Flow Cyt 1:100
Purification	Purified from cell culture supernatant by affinity chromatography
Formulation & Reconstitution	Lyophilized from sterile PBS, pH 7.4. Normally 5 % - 8% trehalose is added as protectants before lyophilization. Please see Certificate of Analysis for specific instructions of reconstitution.
Storage & Shipping	Store at -20°C to -80°C for 12 months in lyophilized form. After reconstitution, if not intended for use within a month, aliquot and store at -80°C (Avoid repeated freezing and thawing). Lyophilized proteins are shipped at ambient temperature.
Background	Syndecan-1 (SYND1 or SDC1) is also known as CD antigen CD138; is a transmembrane (type I) heparan sulfate proteoglycan and is a member of the syndecan proteoglycan family. The syndecans mediate cell binding; cell signaling; and cytoskeletal organization and syndecan receptors are required for internalization of the HIV-1 tat protein. The syndecan-1 : SDC1 protein functions as an integral membrane protein and participates in cell proliferation; cell migration and cell-matrix interactions via its receptor for extracellular matrix proteins. It is a useful marker for plasma cells; but only if the cells tested are already known to be derived from blood.
Usage	Research use only
Conjugate	Unconjugated



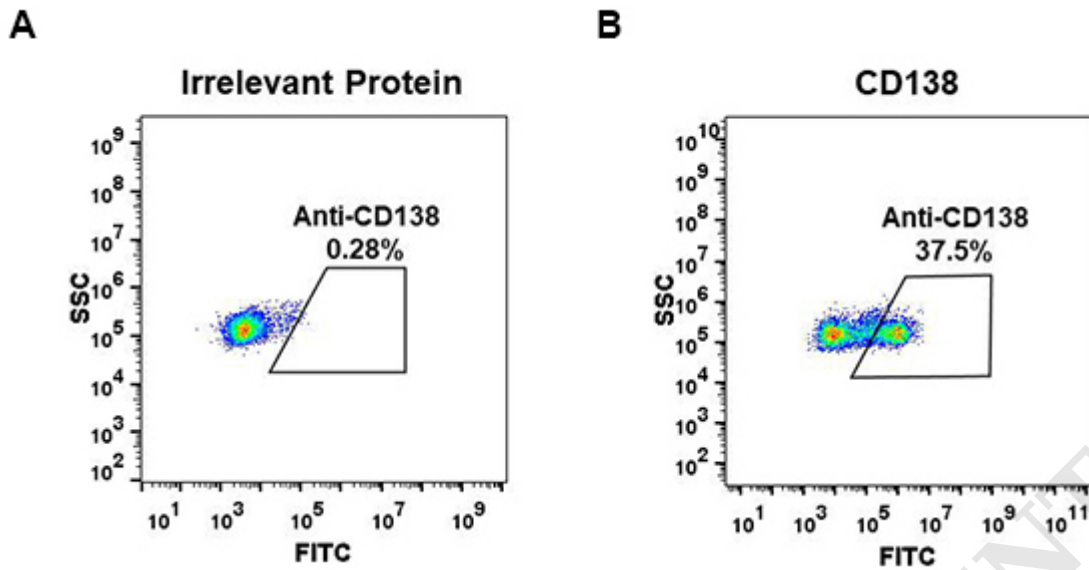


Figure 1. Expi 293 cell line transfected with irrelevant protein (A) and human CD138 (B) were surface stained with Rabbit anti-CD138 monoclonal antibody $1\mu\text{g/ml}$ (clone: DM45) followed by Alexa 488-conjugated anti-rabbit IgG secondary antibody.

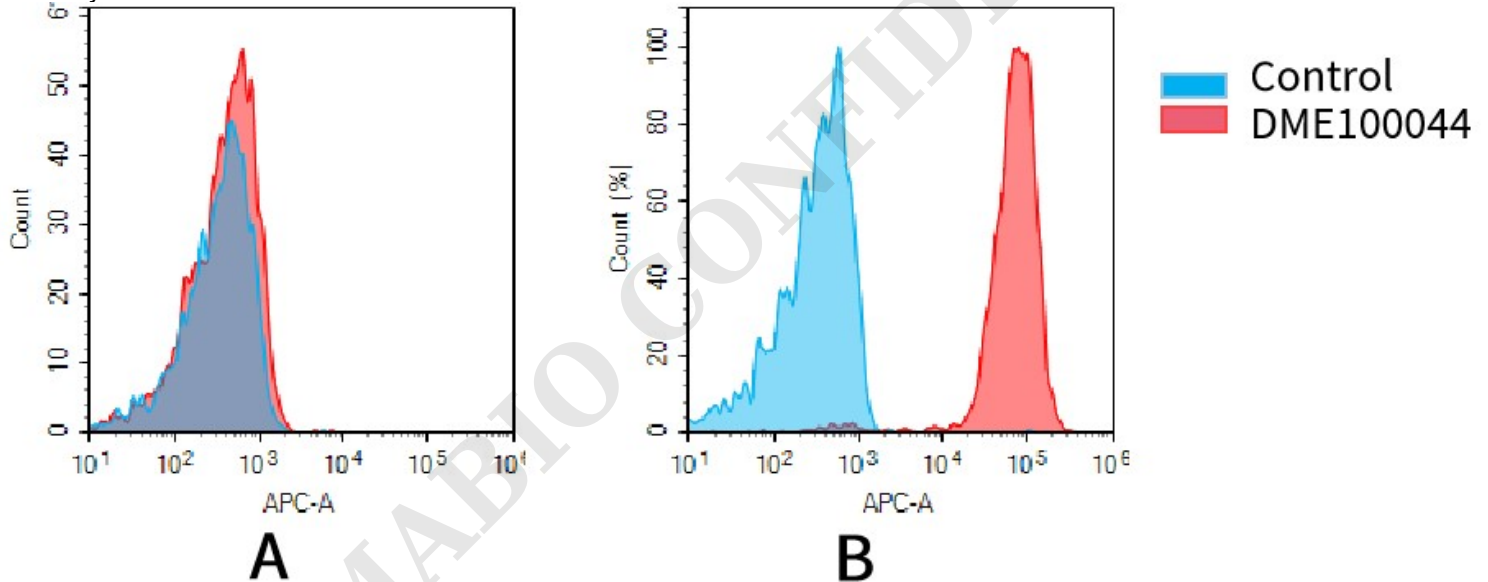


Figure 2. Flow cytometry analysis of antigen binding of rabbit anti-human CD138 mAb (DME100044). (A) DME100044 does not bind to Jurkat cells that do not express CD138. (B) A clear peak shift of DME100044 was seen compared to the control when incubated with CD138-expressing MM.1S cells, indicating strong binding of DME100044 to CD138. Antibodies were incubated at $5\mu\text{g/mL}$.



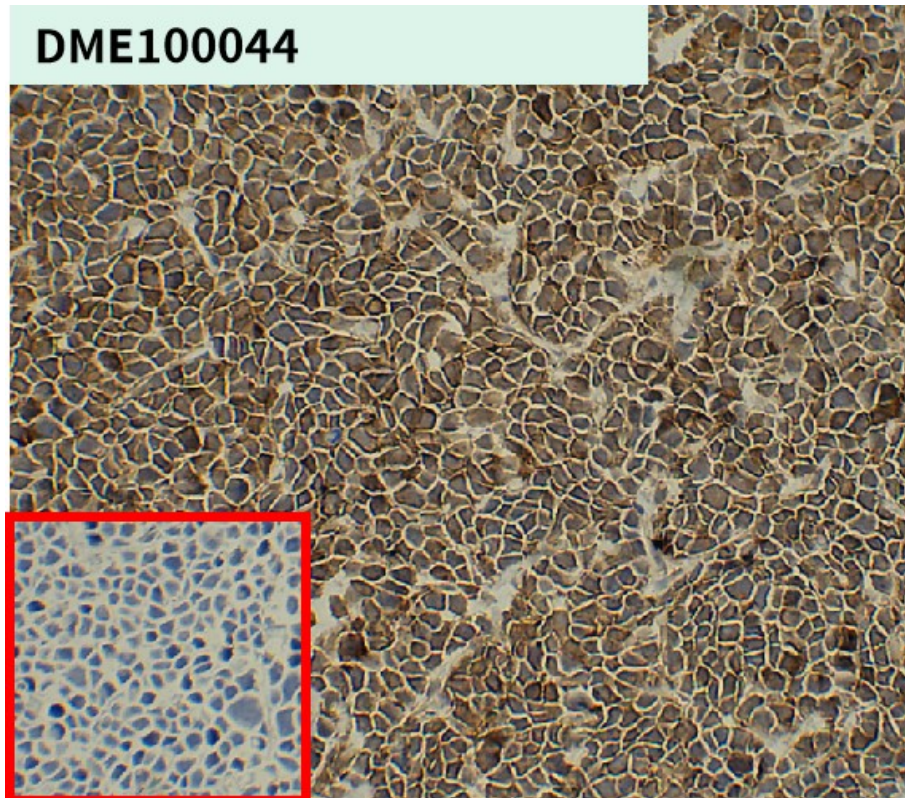


Figure 3. DME100044 at 5 μ g/ml staining CD138 in RPMI-8226 MM xenografts in NSG mice by IHC (SKU# DME100044, DM45);

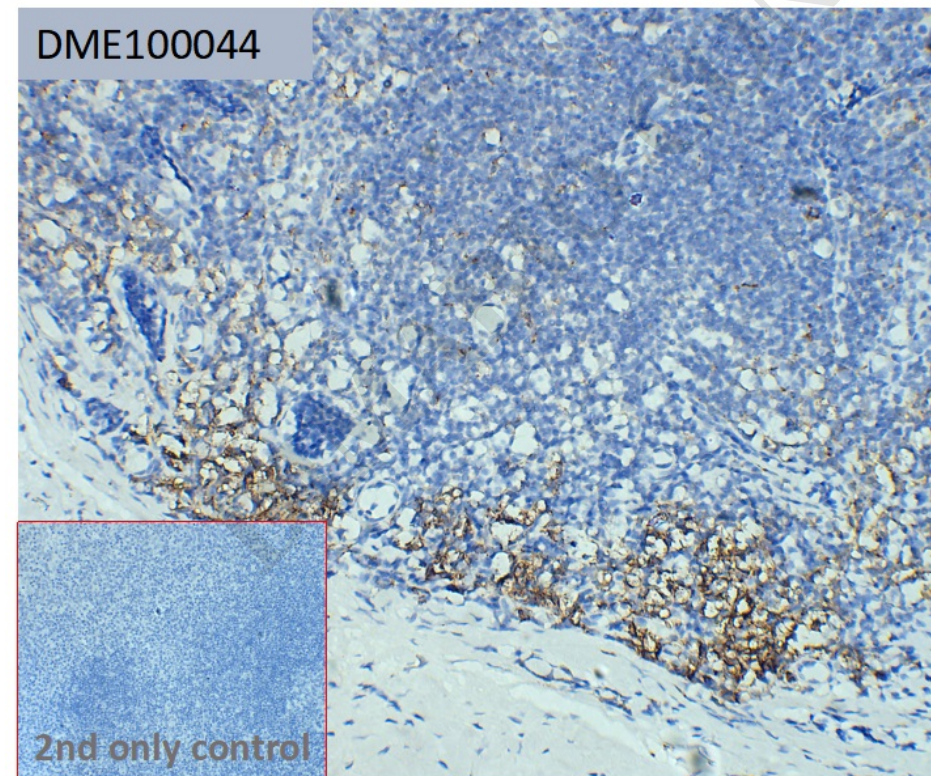


Figure 4. DME100044 at 10 μ g/ml staining CD138 in human tonsil tissue by IHC (SKU# DME100044).

