

PRODUCT INFORMATION

Common Name	IC14
Synonyms	CD14
Applications	ELISA, Flow Cyt
Recommended Dilutions	ELISA 1:5000-10000, Flow Cyt 1:100
Formulation & Reconstitution	Lyophilized from sterile PBS, pH 7.4. Normally 5% - 8% trehalose is added as protectants before lyophilization. Please see Certificate of Analysis for specific instructions of reconstitution.
Host Species	Chimeric
IgG type	IgG4(P108S)
Reactivity	Human
Target	CD14
Uniprot ID	P08571
Description	Anti-CD14(atibuclimab biosimilar) mAb
Delivery	In Stock
Storage & Shipping	Store at -20°C to -80°C for 12 months in lyophilized form. After reconstitution, if not intended for use within a month, aliquot and store at -80°C (Avoid repeated freezing and thawing). Lyophilized antibodies are shipped at ambient temperature.
Background	Research grade biosimilar. Not for use in therapeutic or diagnostic procedures for humans or animals.
Usage	Research use only



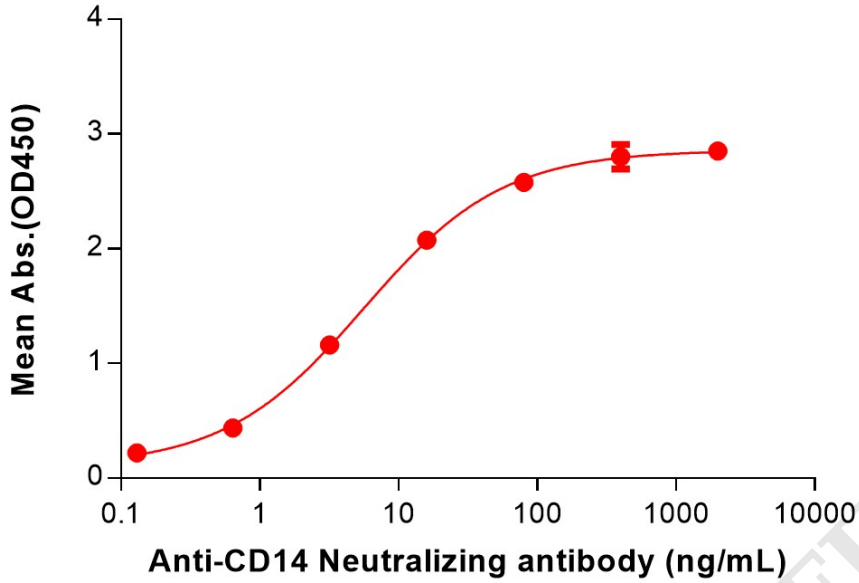
Anti-CD14(atibuclimab biosimilar) mAb ELISA0.2 μg of Human CD14(20-352), His tagged protein per well

Figure 1. ELISA plate pre-coated by 2 $\mu\text{g}/\text{mL}$ (100 $\mu\text{L}/\text{well}$) Human CD14(20-352) Protein, His Tag (PME101230) can Anti-CD14(atibuclimab biosimilar) mAb (BME100205) in a linear range of 0.64-80 ng/mL.

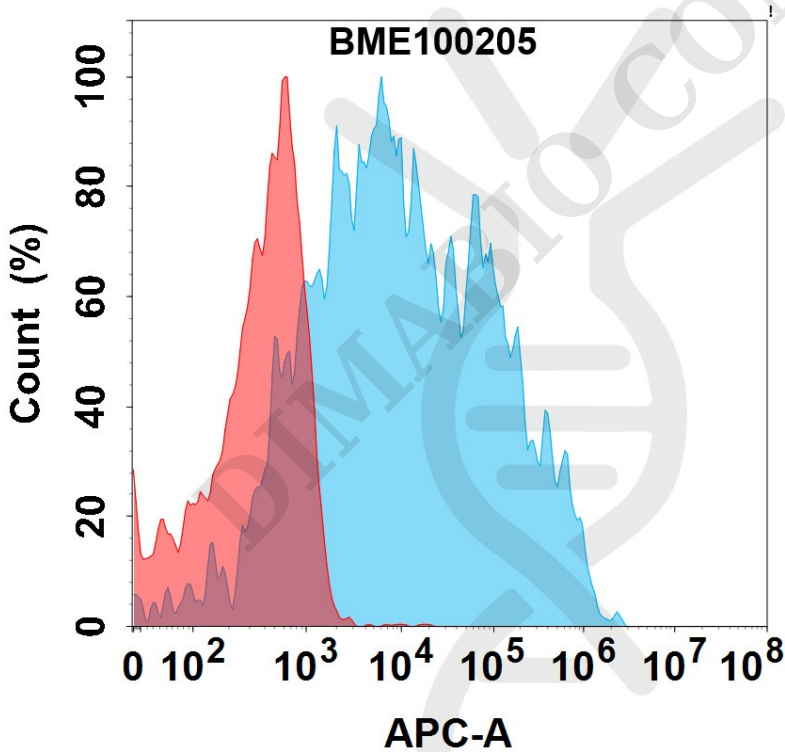


Figure 2. Flow cytometry analysis with 15 $\mu\text{g}/\text{mL}$ Anti-CD14(atibuclimab biosimilar) mAb (BME100205) on Expi293 cells transfected with Human CD14 protein (Blue histogram) or Expi293 transfected with irrelevant protein (Red histogram).

