

PRODUCT INFORMATION

Clone ID	DM146
Target	CD155
Synonyms	PVR; FLJ25946; PVS; CD155; TAGE4; HVED; NECL5
Host Species	Rabbit
Description	Anti-CD155 antibody(DM146); Rabbit mAb
Delivery	In Stock
Uniprot ID	P15151
IgG type	Rabbit IgG
Clonality	Monoclonal
Reactivity	Human
Applications	ELISA; Flow Cyt
Recommended Dilutions	ELISA 1:5000-10000; Flow Cyt 1:100
Purification	Purified from cell culture supernatant by affinity chromatography
Formulation & Reconstitution	Lyophilized from sterile PBS, pH 7.4. Normally 5 % - 8% trehalose is added as protectants before lyophilization. Please see Certificate of Analysis for specific instructions of reconstitution.
Storage & Shipping	Store at -20°C to -80°C for 12 months in lyophilized form. After reconstitution, if not intended for use within a month, aliquot and store at -80°C (Avoid repeated freezing and thawing). Lyophilized proteins are shipped at ambient temperature.
Background	The protein encoded by this gene is a transmembrane glycoprotein belonging to the immunoglobulin superfamily. The external domain mediates cell attachment to the extracellular matrix molecule vitronectin; while its intracellular domain interacts with the dynein light chain Tctex-1:DYNLT1. The gene is specific to the primate lineage; and serves as a cellular receptor for poliovirus in the first step of poliovirus replication. Multiple transcript variants encoding different isoforms have been found for this gene.
Usage	Research use only
Conjugate	Unconjugated



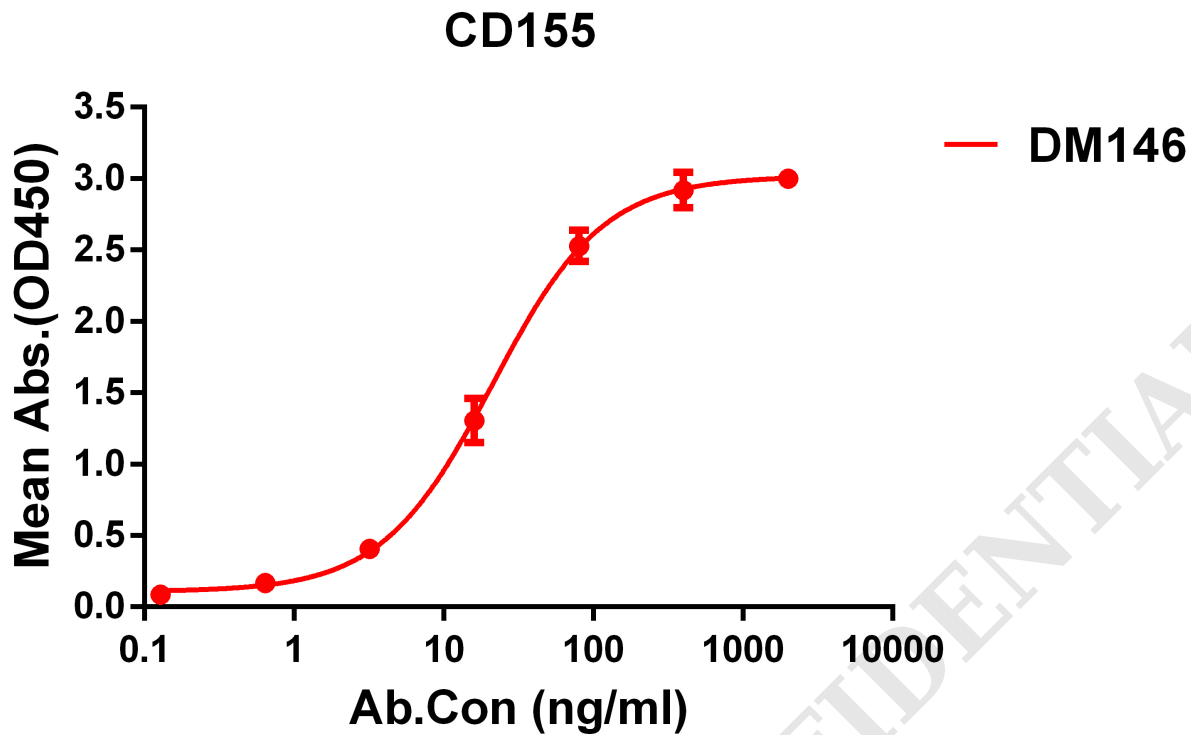


Figure 1. ELISA plate pre-coated by 1 μ g/ml (100 μ l/well) Human CD155 protein, mFc tagged protein PME100027 can bind Rabbit anti-CD155 monoclonal antibody (clone: DM146) in a linear range of 5-100 ng/ml.

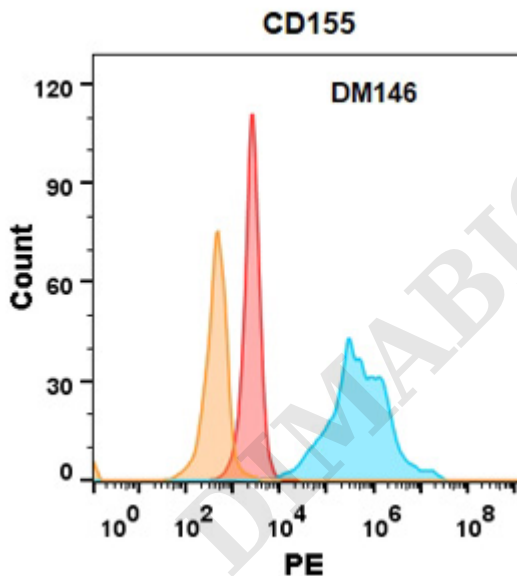


Figure 2. CD155 protein is highly expressed on the surface of Expi293 cell membrane. Flow cytometry analysis with Anti-CD155 (DM146) on Expi293 cells transfected with human CD155 (Blue histogram) or Expi293 transfected with irrelevant protein (Red histogram), and Isotype antibody on Expi293 transfected with irrelevant protein (Orange histogram).



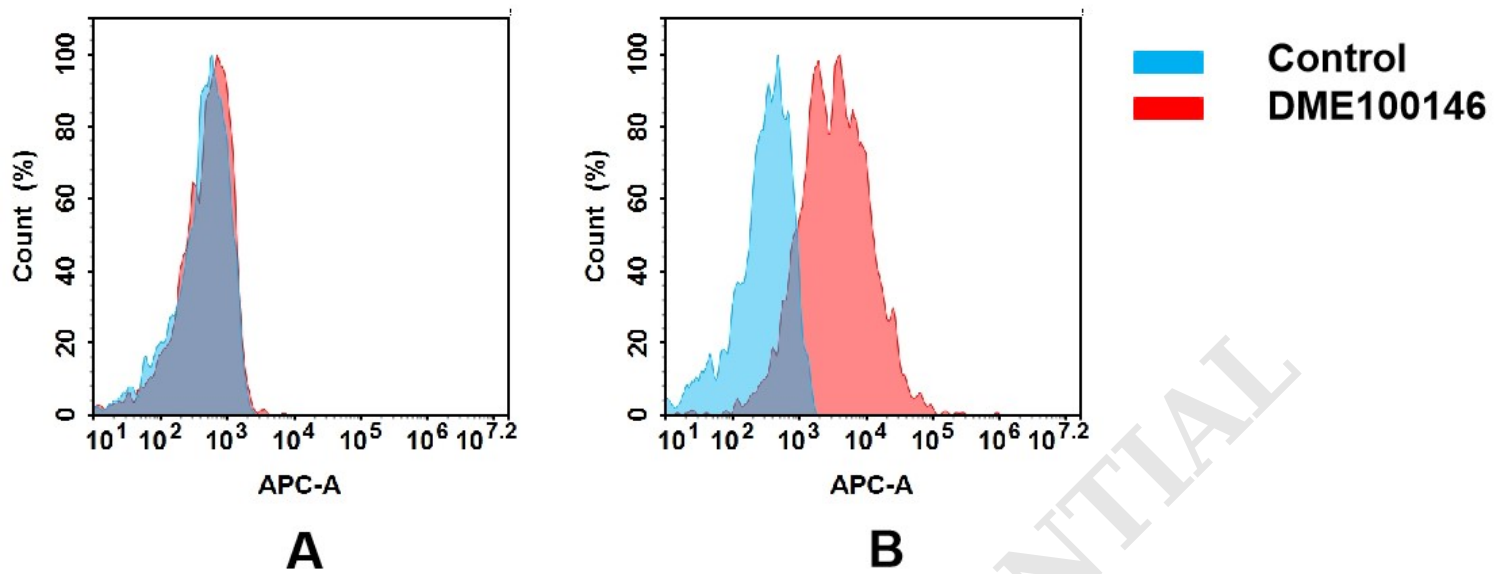


Figure 3. Flow cytometry analysis of antigen binding of rabbit anti-human CD155 mAb(DME100146).

(A) DME100146 does not bind to CHO-S cells that do not express CD155.

(B) A clear peak shift of DME100146 was seen compared to the control when incubated with CD155-expressing Daudi cells, indicating strong binding of DME100146 to CD155. Antibodies were incubated at 5 μ g/ml.

DIMABIO CONFIDENTIAL

