

**PRODUCT INFORMATION**

<b>Clone ID</b>	DMC682
<b>Target</b>	CD166
<b>Synonyms</b>	CD166; MEMD
<b>Host Species</b>	Rabbit
<b>Description</b>	Anti-CD166 antibody(DMC682); IgG1 Chimeric mAb
<b>Delivery</b>	In Stock
<b>Uniprot ID</b>	Q13740-1
<b>IgG type</b>	Rabbit/Human Fc chimeric IgG1
<b>Clonality</b>	Monoclonal
<b>Reactivity</b>	Human
<b>Applications</b>	Flow Cyt
<b>Recommended Dilutions</b>	Flow Cyt 1:100
<b>Purification</b>	Purified from cell culture supernatant by affinity chromatography
<b>Formulation &amp; Reconstitution</b>	Lyophilized from sterile PBS, pH 7.4. Normally 5 % - 8% trehalose is added as protectants before lyophilization. Please see Certificate of Analysis for specific instructions of reconstitution.
<b>Storage &amp; Shipping</b>	Store at -20°C to -80°C for 12 months in lyophilized form. After reconstitution, if not intended for use within a month, aliquot and store at -80°C (Avoid repeated freezing and thawing). Lyophilized proteins are shipped at ambient temperature.
<b>Background</b>	This gene encodes activated leukocyte cell adhesion molecule (ALCAM); also known as CD166 (cluster of differentiation 166); which is a member of a subfamily of immunoglobulin receptors with five immunoglobulin-like domains (VVC2C2C2) in the extracellular domain. This protein binds to T-cell differentiation antigene CD6; and is implicated in the processes of cell adhesion and migration. Multiple alternatively spliced transcript variants encoding different isoforms have been found. [provided by RefSeq; Aug 2011]
<b>Usage</b>	Research use only



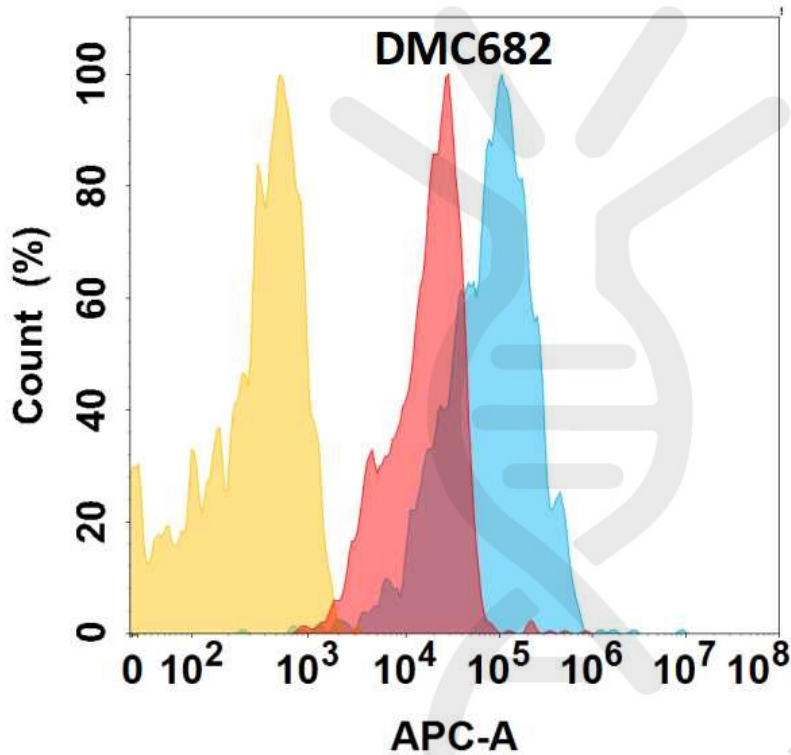


Figure 1. CD166 protein is expressed on the surface of Expi293 cell membrane. Flow cytometry analysis with Anti-CD166 (DMC682) on Expi293 cells transfected with human CD166 (Blue histogram) or Expi293 transfected with irrelevant protein (Red histogram), and Isotype antibody on Expi293 transfected with irrelevant protein (Orange histogram).

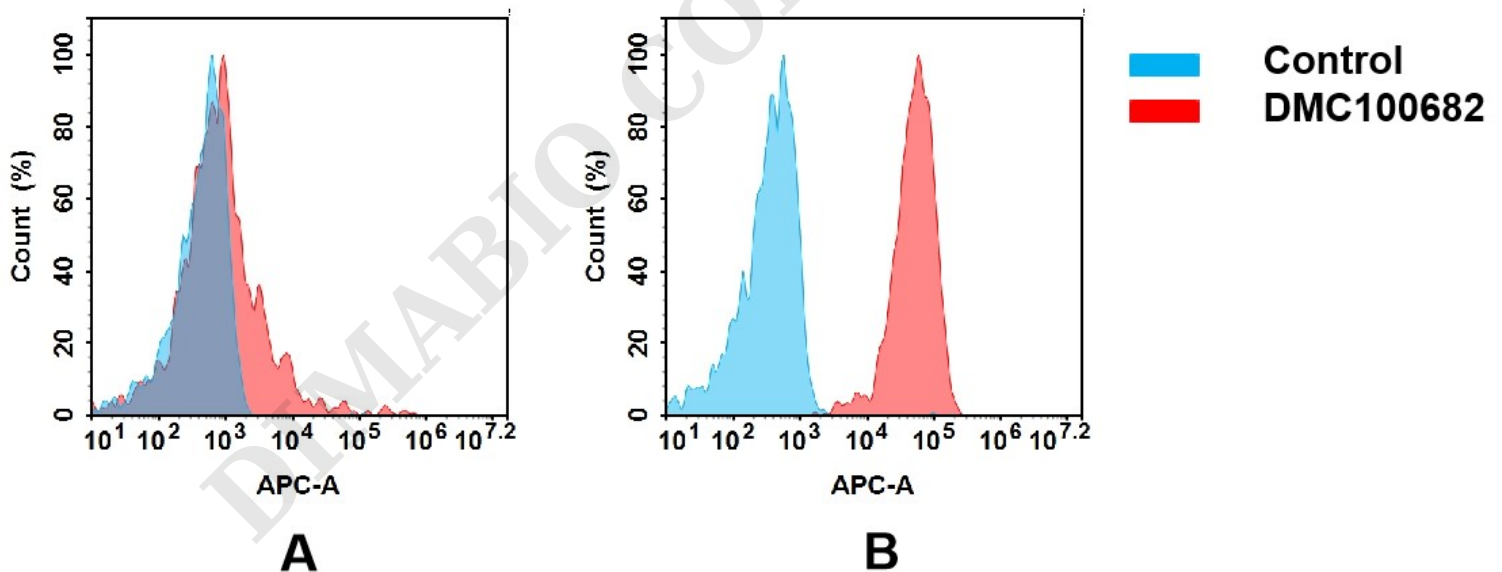


Figure 2. Flow cytometry analysis of antigen binding of anti-human CD166 mAb(DMC100682).

(A) DMC100682 does not bind to K562 cells that do not express CD166.

(B) A clear peak shift of DMC100682 was seen compared to the control when incubated with CD166-expressing Hela cells, indicating strong binding of DMC100682 to CD166. Antibodies were incubated at 5  $\mu$ g/mL.



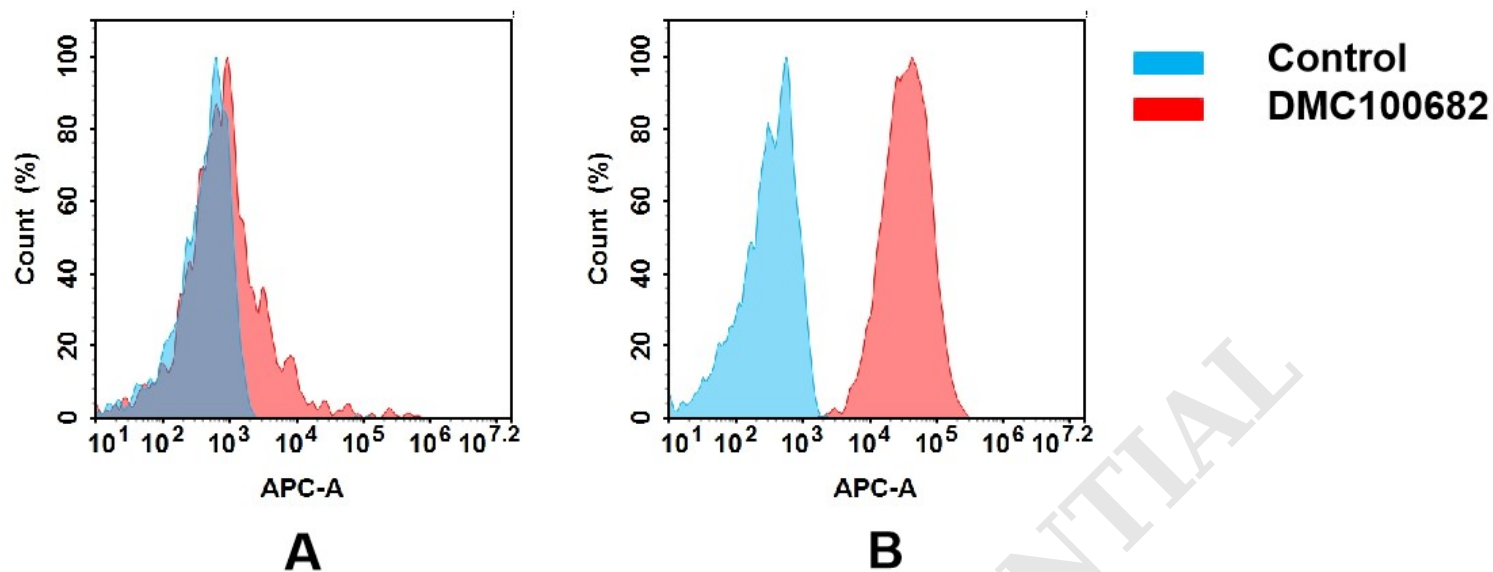


Figure 3. Flow cytometry analysis of antigen binding of anti-human CD166 mAb(DMC100682).

(A) DMC100682 does not bind to K562 cells that do not express CD166.

(B) A clear peak shift of DMC100682 was seen compared to the control when incubated with CD166-expressing Huh7 cells, indicating strong binding of DMC100682 to CD166. Antibodies were incubated at 5 µg/mL.

DIMABIO CONFIDENTIAL

