

PRODUCT INFORMATION

Common Name	CX-191
Synonyms	ALCAM;MEMD
Applications	Flow Cyt
Recommended Dilutions	Flow Cyt 1:100
Formulation & Reconstitution	Lyophilized from sterile PBS, pH 7.4. Normally 5% - 8% trehalose is added as protectants before lyophilization. Please see Certificate of Analysis for specific instructions of reconstitution.
Host Species	Humanized
IgG type	IgG1
Reactivity	Human
Target	CD166
Uniprot ID	Q13740
Description	Anti-CD166(praluzatamab biosimilar) mAb
Delivery	In Stock
Storage & Shipping	Store at -20°C to -80°C for 12 months in lyophilized form. After reconstitution, if not intended for use within a month, aliquot and store at -80°C (Avoid repeated freezing and thawing). Lyophilized proteins are shipped at ambient temperature.
Background	Research grade biosimilar. Not for use in therapeutic or diagnostic procedures for humans or animals.
Usage	Research use only

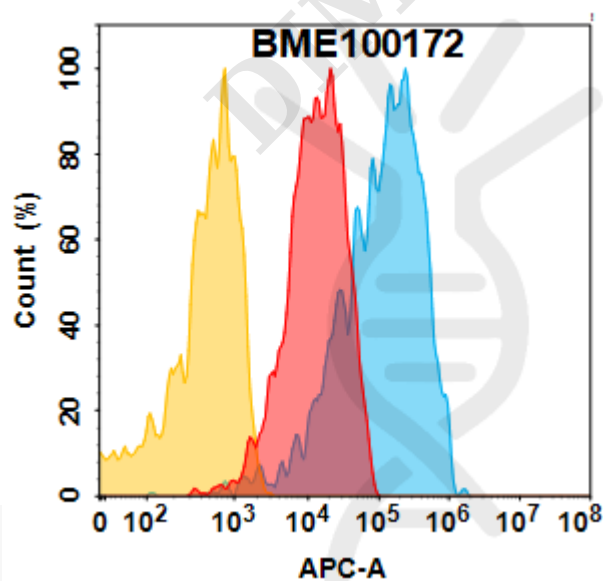


Figure 1. CD166 protein is highly expressed on the surface of Expi293 cell membrane. Flow cytometry analysis with 15 μ g/mL Anti-CD166(praluzatamab biosimilar) mAb (BME100172) on Expi293 cells transfected with Human CD166 (Blue histogram) or Expi293 transfected with irrelevant protein (Red histogram), and Isotype antibody on Expi293 transfected with irrelevant protein (Orange histogram).

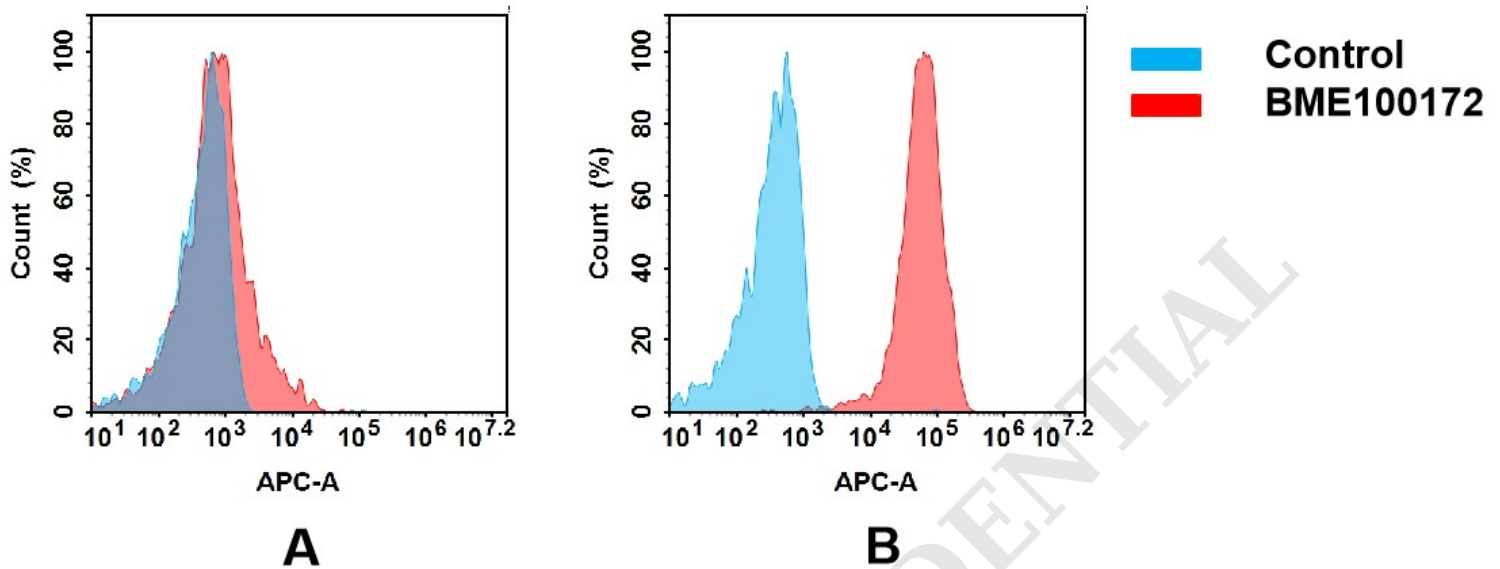


Figure 2. Flow cytometry analysis of antigen binding of anti-human CD166 mAb(BME100172).

(A) BME100172 does not bind to K562 cells that do not express CD166.

(B) A clear peak shift of BME100172 was seen compared to the control when incubated with CD166-expressing Hela cells, indicating strong binding of BME100172 to CD166. Antibodies were incubated at 5 μ g/mL.

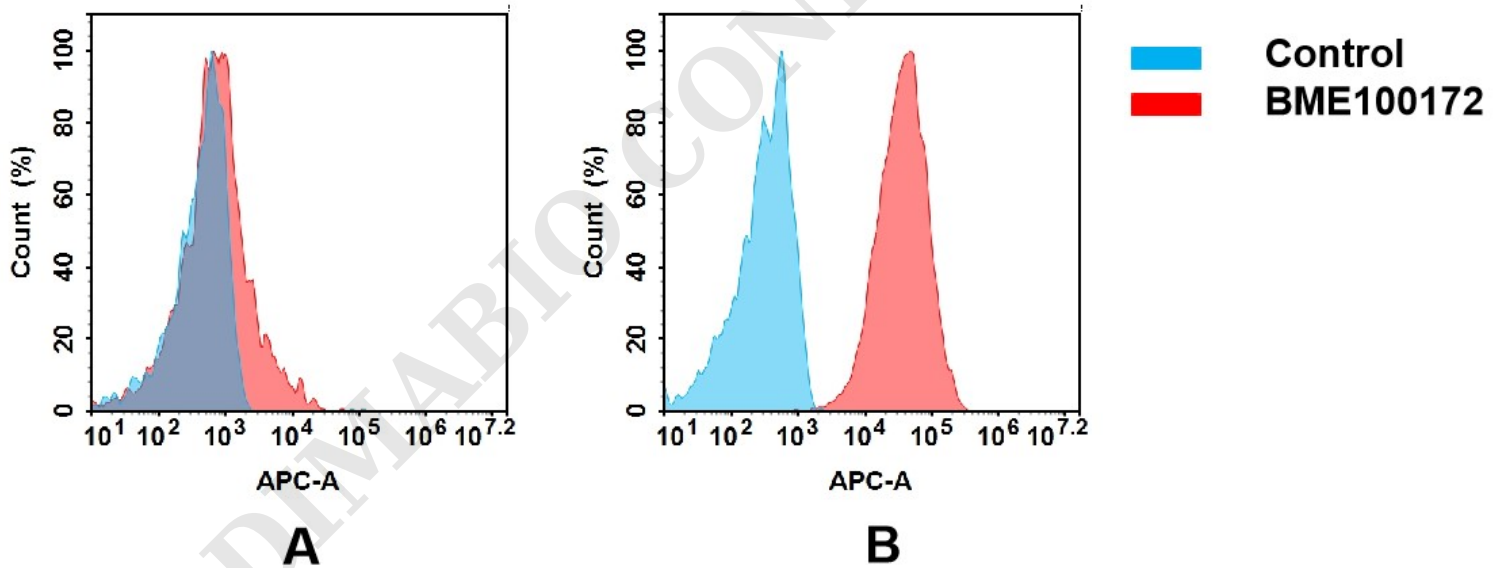


Figure 3. Flow cytometry analysis of antigen binding of anti-human CD166 mAb(BME100172).

(A) BME100172 does not bind to K562 cells that do not express CD166.

(B) A clear peak shift of BME100172 was seen compared to the control when incubated with CD166-expressing Huh7 cells, indicating strong binding of BME100172 to CD166. Antibodies were incubated at 5 μ g/mL.

