

PRODUCT INFORMATION

Clone ID	DMC423
Target	CD2
Synonyms	LFA-2; SRBC; T11
Host Species	Rabbit
Description	Anti-CD2 antibody(DMC423); IgG1 Chimeric mAb
Delivery	In Stock
Uniprot ID	P06729
IgG type	Rabbit/Human Fc chimeric IgG1
Clonality	Monoclonal
Reactivity	Human
Applications	Flow Cyt
Recommended Dilutions	Flow Cyt 1:100
Purification	Purified from cell culture supernatant by affinity chromatography
Formulation & Reconstitution	Lyophilized from sterile PBS, pH 7.4. Normally 5% - 8% trehalose is added as protectants before lyophilization. Please see Certificate of Analysis for specific instructions of reconstitution.
Storage & Shipping	Store at -20°C to -80°C for 12 months in lyophilized form. After reconstitution, if not intended for use within a month, aliquot and store at -80°C (Avoid repeated freezing and thawing). Lyophilized proteins are shipped at ambient temperature.
Background	The protein encoded by this gene is a surface antigen found on all peripheral blood T-cells. The encoded protein interacts with LFA3 (CD58) on antigen presenting cells to optimize immune recognition. A locus control region (LCR) has been found in the 3' flanking sequence of this gene.
Usage	Research use only

CONFIDENTIAL



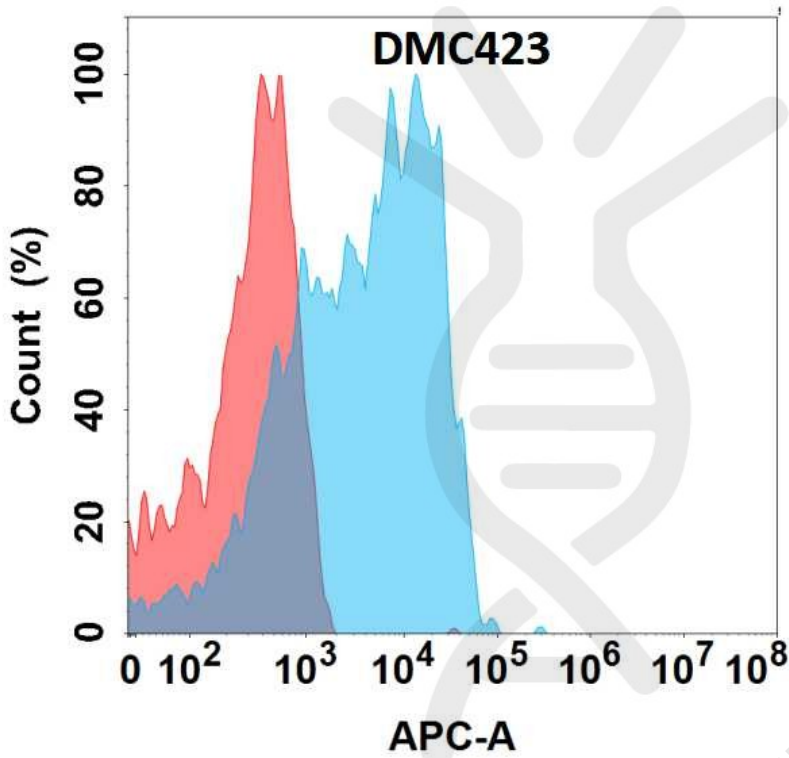


Figure 1. Flow cytometry analysis with Anti-CD2 (DMC423) on Expi293 cells transfected with human CD2 (Blue histogram) or Expi293 transfected with irrelevant protein (Red histogram).

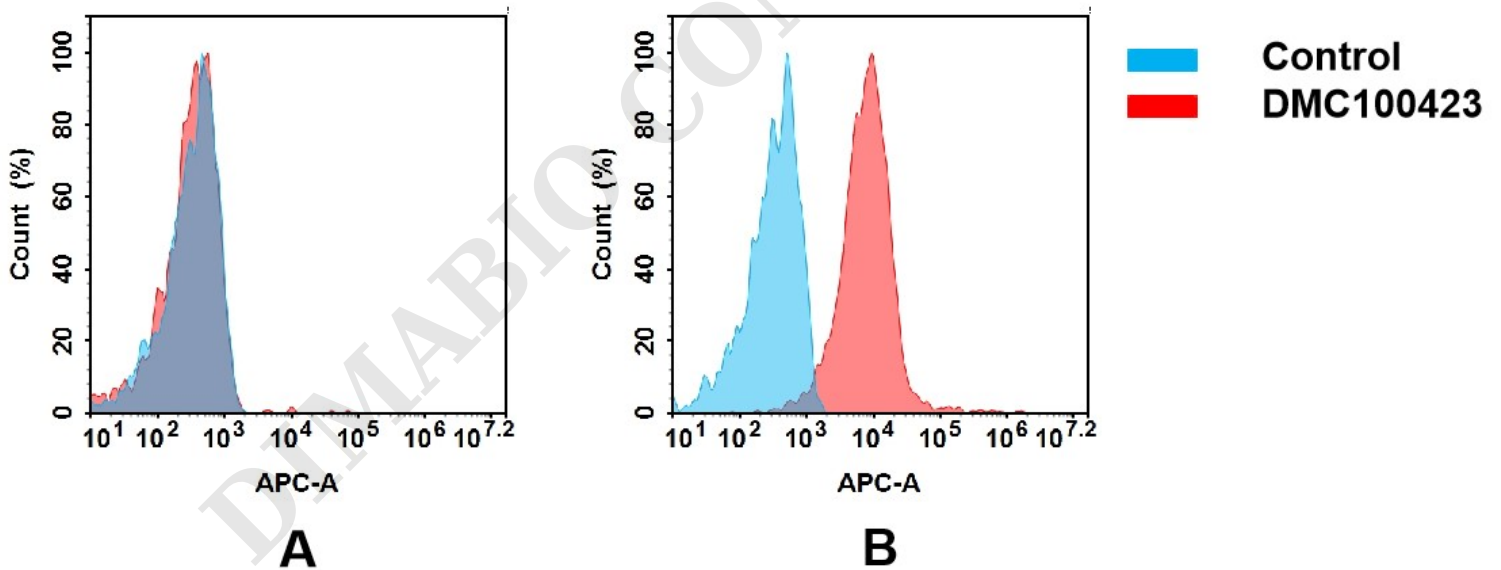


Figure 2. Flow cytometry analysis of antigen binding of anti-human CD2 mAb(DMC100423).

(A) DMC100423 does not bind to 293T cells that do not express CD2.

(B) A clear peak shift of DMC100423 was seen compared to the control when incubated with CD2-expressing Jurkat cells, indicating strong binding of DMC100423 to CD2. Antibodies were incubated at 10 µg/mL.

