

## PRODUCT INFORMATION

<b>Clone ID</b>	8B5
<b>Target</b>	CD22
<b>Synonyms</b>	SIGLEC2; SIGLEC-2
<b>Host Species</b>	Rabbit
<b>Description</b>	Anti-CD22 antibody(8B5), Rabbit mAb
<b>Delivery</b>	In Stock
<b>Uniprot ID</b>	P20273
<b>IgG type</b>	Rabbit IgG
<b>Clonality</b>	Monoclonal
<b>Reactivity</b>	Human
<b>Applications</b>	WB; Flow Cyt
<b>Recommended Dilutions</b>	WB 1:1000; Flow Cyt 1:100
<b>Purification</b>	Purified from cell culture supernatant by affinity chromatography
<b>Formulation &amp; Reconstitution</b>	Lyophilized from sterile PBS, pH 7.4. Normally 5 % - 8% trehalose is added as protectants before lyophilization. Please see Certificate of Analysis for specific instructions of reconstitution.
<b>Storage &amp; Shipping</b>	Store at -20°C to -80°C for 12 months in lyophilized form. After reconstitution, if not intended for use within a month, aliquot and store at -80°C (Avoid repeated freezing and thawing). Lyophilized proteins are shipped at ambient temperature.
<b>Background</b>	CD22 (CD22 Molecule) is a Protein Coding gene. Diseases associated with CD22 include Refractory Hematologic Cancer and Hairy Cell Leukemia. Among its related pathways are Downstream signaling events of B Cell Receptor (BCR) and Hematopoietic cell lineage. Gene Ontology (GO) annotations related to this gene include carbohydrate binding. An important paralog of this gene is SIGLEC2.
<b>Usage</b>	Research use only
<b>Conjugate</b>	Unconjugated
<b>DIMA Disclaimer</b>	All DIMA recombinant antibodies are genuinely generated by DIMA Biotech. They are all under patent application. Any protein sequencing or reverse engineering attempt is prohibited. We are actively scrutinizing all patent application to ensure no IP infringement.



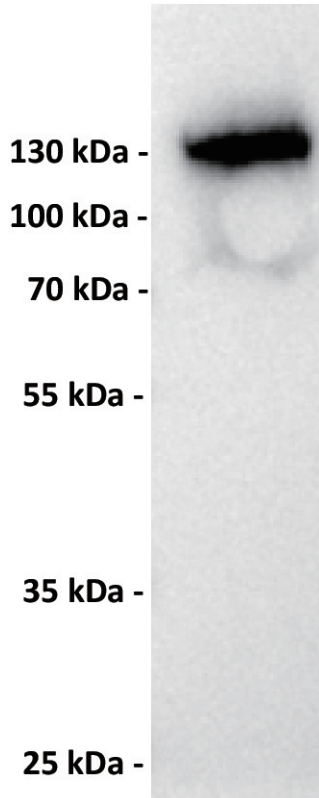


Figure 1. Anti-CD22 antibody (SKU# DME100012) at 1/1000 dilution

Lane : Raji (human Burkitt's lymphoma B lymphocyte), whole cell lysate

Secondary : Goat Anti-Rabbit IgG H&L (HRP) at 1/5000 dilution

Predicted band size: 60 kDa  
Observed band size: 130 kDa

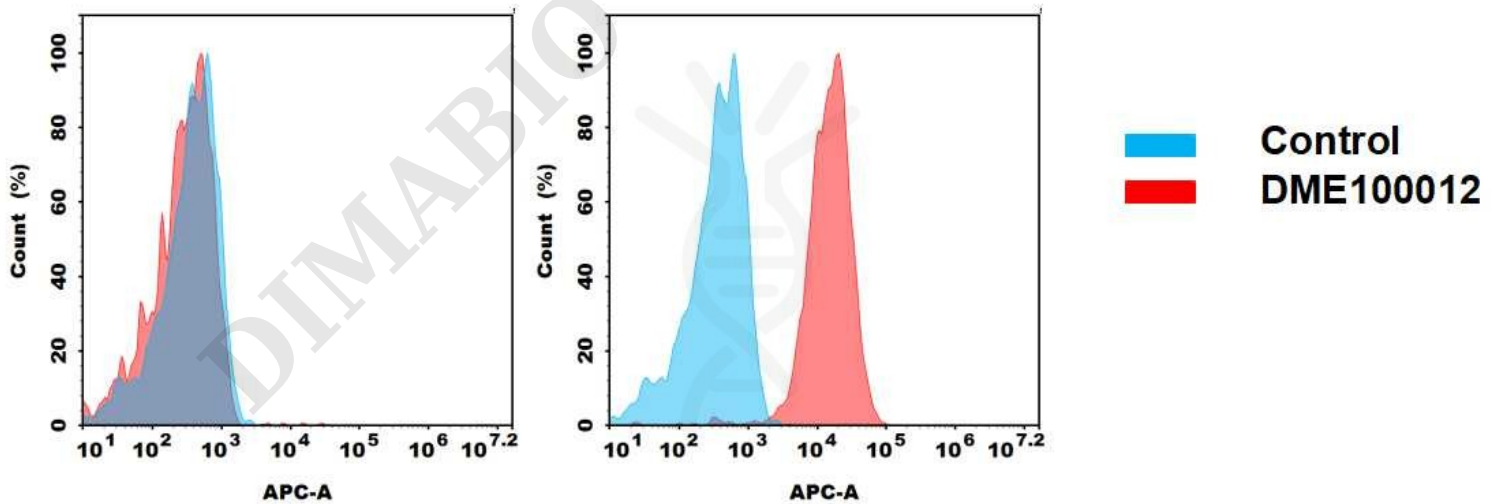


Figure 2. Flow cytometry analysis of antigen binding of anti-human CD22 mAb(DME100012).

(A) DME100012 does not bind to Jurkat cells that do not express CD22

(B) A clear peak shift of DME100012 was seen compared to the control when incubated with CD22-expressing Raji cells, indicating strong binding of DME100012 to CD22.

Antibodies were incubated at 10 ug/mL.

