

PRODUCT INFORMATION

Clone ID	DM63
Target	CD28
Synonyms	CD28; Tp44
Host Species	Rabbit
Description	Anti-CD28 antibody(DM63); Rabbit mAb
Delivery	In Stock
Uniprot ID	P10747
IgG type	Rabbit IgG
Clonality	Monoclonal
Reactivity	Human
Applications	ELISA; Flow Cyt
Recommended Dilutions	ELISA 1:5000-10000; Flow Cyt 1:100
Purification	Purified from cell culture supernatant by affinity chromatography
Formulation & Reconstitution	Lyophilized from sterile PBS, pH 7.4. Normally 5% - 8% trehalose is added as protectants before lyophilization. Please see Certificate of Analysis for specific instructions of reconstitution.
Storage & Shipping	Store at -20°C to -80°C for 12 months in lyophilized form. After reconstitution, if not intended for use within a month, aliquot and store at -80°C (Avoid repeated freezing and thawing). Lyophilized proteins are shipped at ambient temperature.
Background	The protein encoded by this gene is essential for T-cell proliferation and survival; cytokine production; and T-helper type-2 development. Several alternatively spliced transcript variants encoding different isoforms have been found for this gene.
Usage	Research use only
Conjugate	Unconjugated



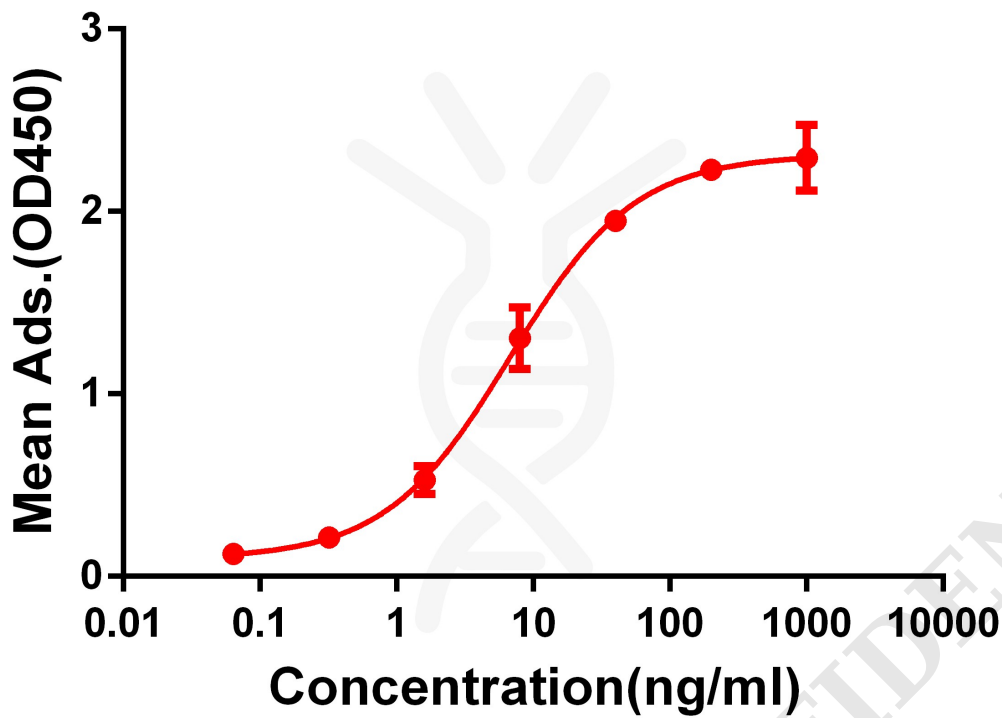


Figure 1. ELISA plate pre-coated by 2 $\mu\text{g/ml}$ (100 $\mu\text{l/well}$) Human CD28 protein, mFc-His tagged protein PME100014 can bind Rabbit anti-CD28 monoclonal antibody (clone: DM63) in a linear range of 1-100 ng/ml.

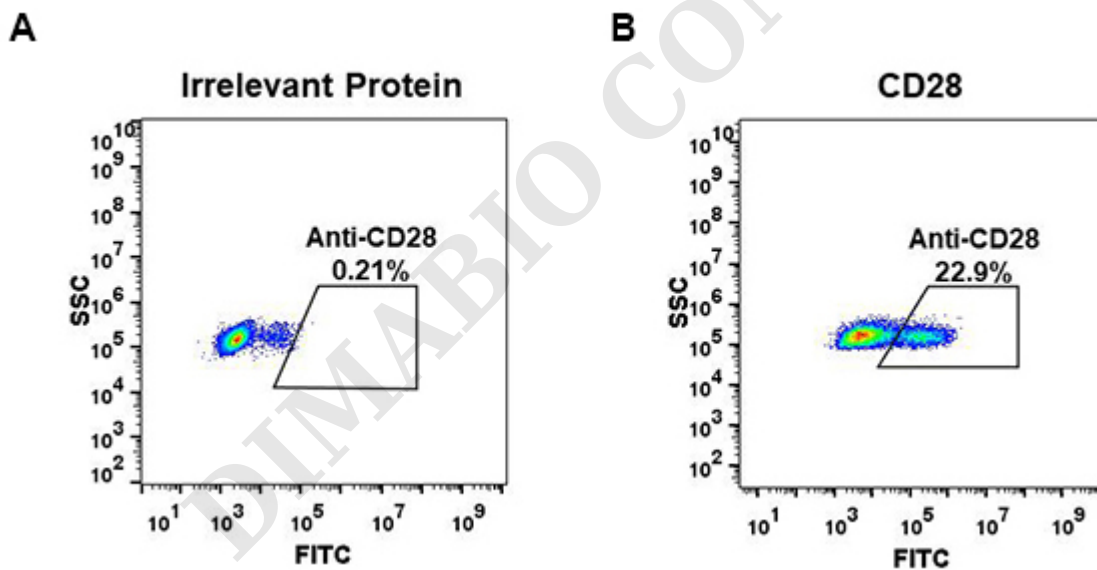


Figure 2. Expi 293 cell line transfected with irrelevant protein (A) and human CD28 (B) were surface stained with Rabbit anti-CD28 monoclonal antibody 1 $\mu\text{g/ml}$ (clone: DM63) followed by Alexa 488-conjugated anti-rabbit IgG secondary antibody.



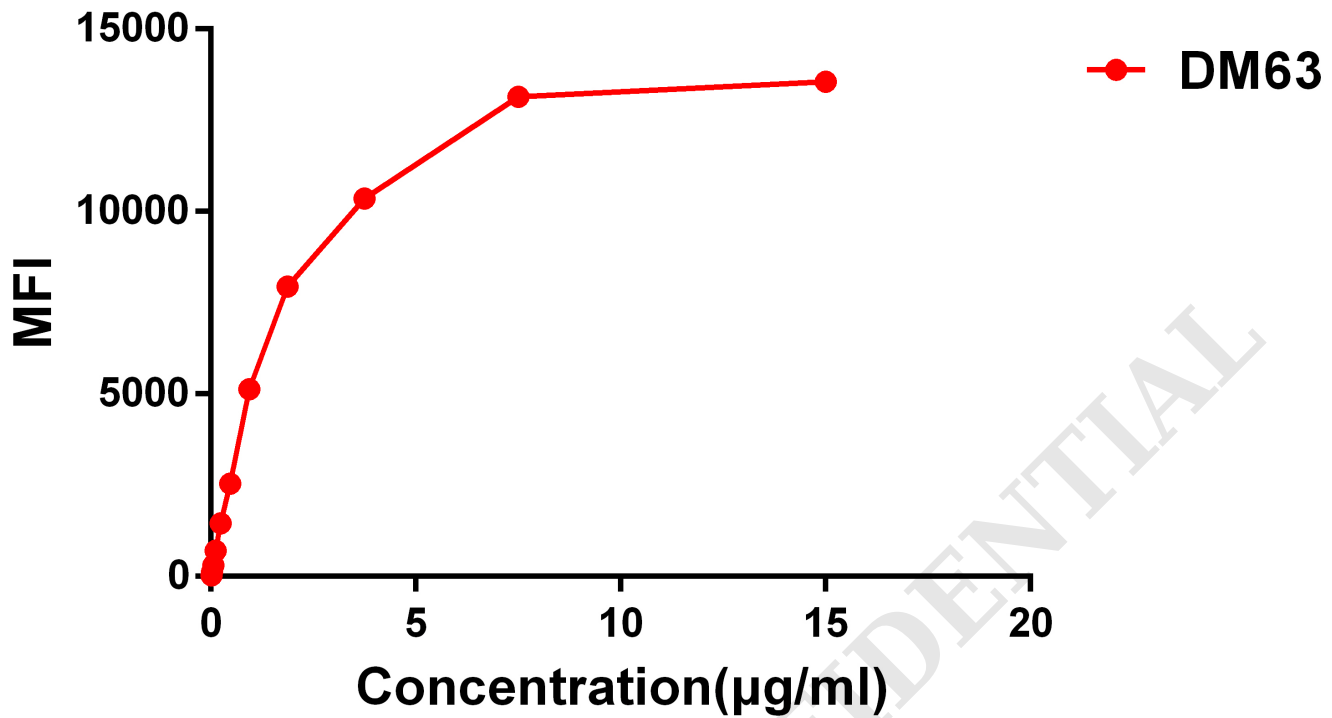


Figure 3. Flow cytometry data of serially titrated Rabbit anti-CD28 monoclonal antibody (clone: DM63) on Jurkat cells. The Y-axis represents the mean fluorescence intensity (MFI) while the X-axis represents the concentration of IgG used.

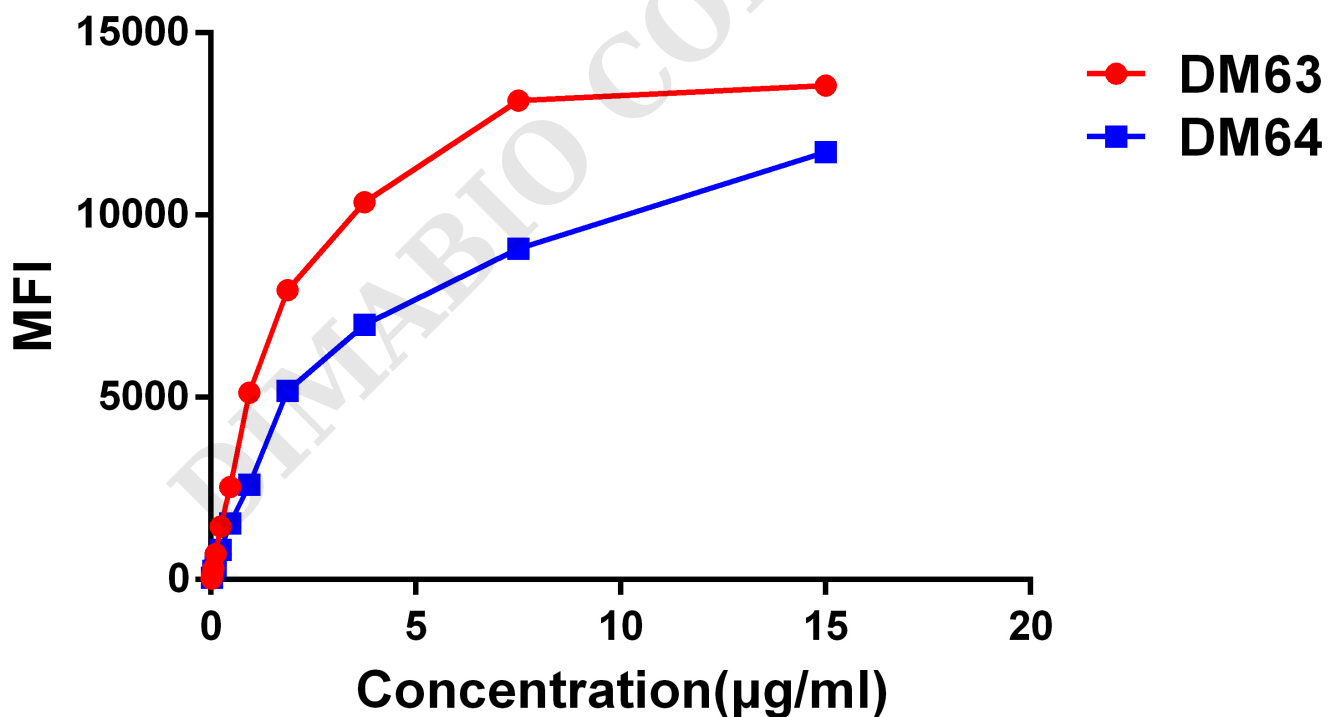


Figure 4. Affinity ranking of different Rabbit anti- CD28 mAb clones by titration of different concentration onto Jurkat cells. The Y-axis represents the mean fluorescence intensity (MFI) while the X-axis represents the concentration of IgG used.



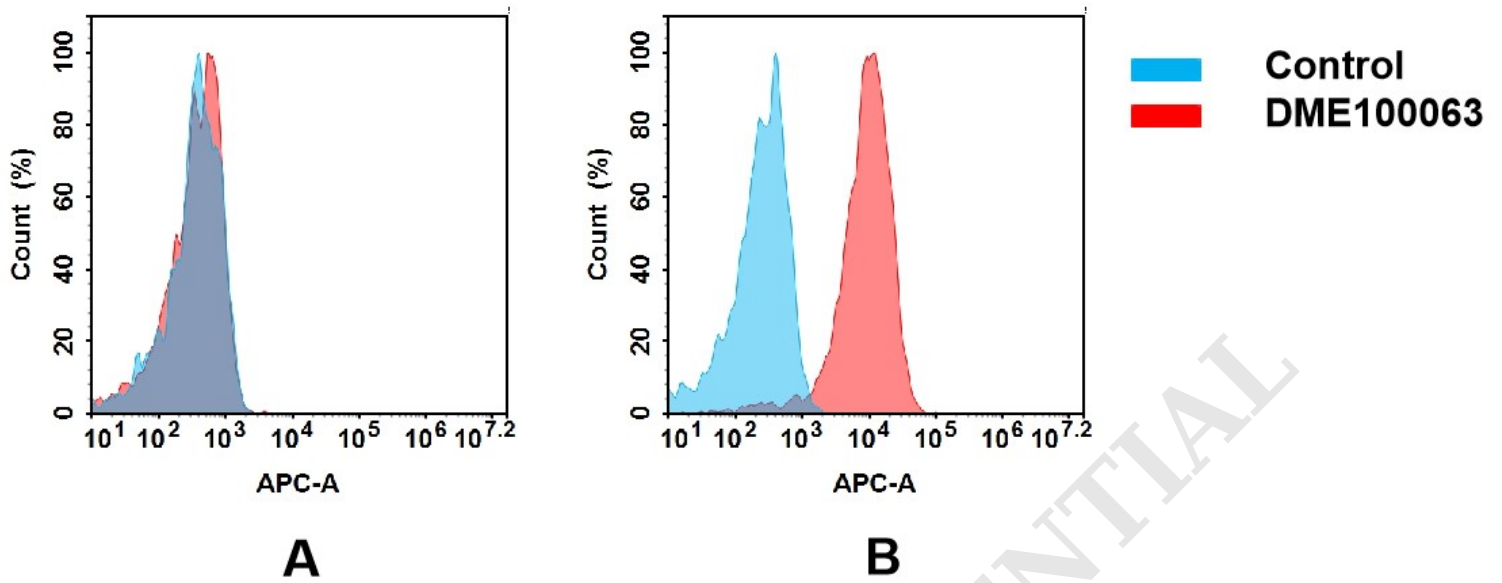


Figure 5. Flow cytometry analysis of antigen binding of rabbit anti-human CD28 mAb(DME100063).

(A) DME100063 does not bind to 293T cells that do not express CD28.

(B) A clear peak shift of DME100063 was seen compared to the control when incubated with CD28-expressing Jurkat cells, indicating strong binding of DME100063 to CD28. Antibodies were incubated at 2 μ g/mL.

