

PRODUCT INFORMATION

Clone ID	DM103
Target	CD30
Synonyms	TNFRSF8;CD30;D1S166E;Ki-1
Host Species	Rabbit
Description	Anti-CD30 antibody(DM103); Rabbit mAb
Delivery	In Stock
Uniprot ID	P28908
IgG type	Rabbit IgG
Clonality	Monoclonal
Reactivity	Human
Applications	ELISA; Flow Cyt
Recommended Dilutions	ELISA 1:5000-10000; Flow Cyt 1:100
Purification	Purified from cell culture supernatant by affinity chromatography
Formulation & Reconstitution	Lyophilized from sterile PBS, pH 7.4. Normally 5 % - 8% trehalose is added as protectants before lyophilization. Please see Certificate of Analysis for specific instructions of reconstitution.
Storage & Shipping	Store at -20°C to -80°C for 12 months in lyophilized form. After reconstitution, if not intended for use within a month, aliquot and store at -80°C (Avoid repeated freezing and thawing). Lyophilized proteins are shipped at ambient temperature.
Background	The protein encoded by this gene is a member of the TNF-receptor superfamily. This receptor is expressed by activated; but not by resting; T and B cells. TRAF2 and TRAF5 can interact with this receptor; and mediate the signal transduction that leads to the activation of NF-kappaB. This receptor is a positive regulator of apoptosis; and also has been shown to limit the proliferative potential of autoreactive CD8 effector T cells and protect the body against autoimmunity. Two alternatively spliced transcript variants of this gene encoding distinct isoforms have been reported.
Usage	Research use only



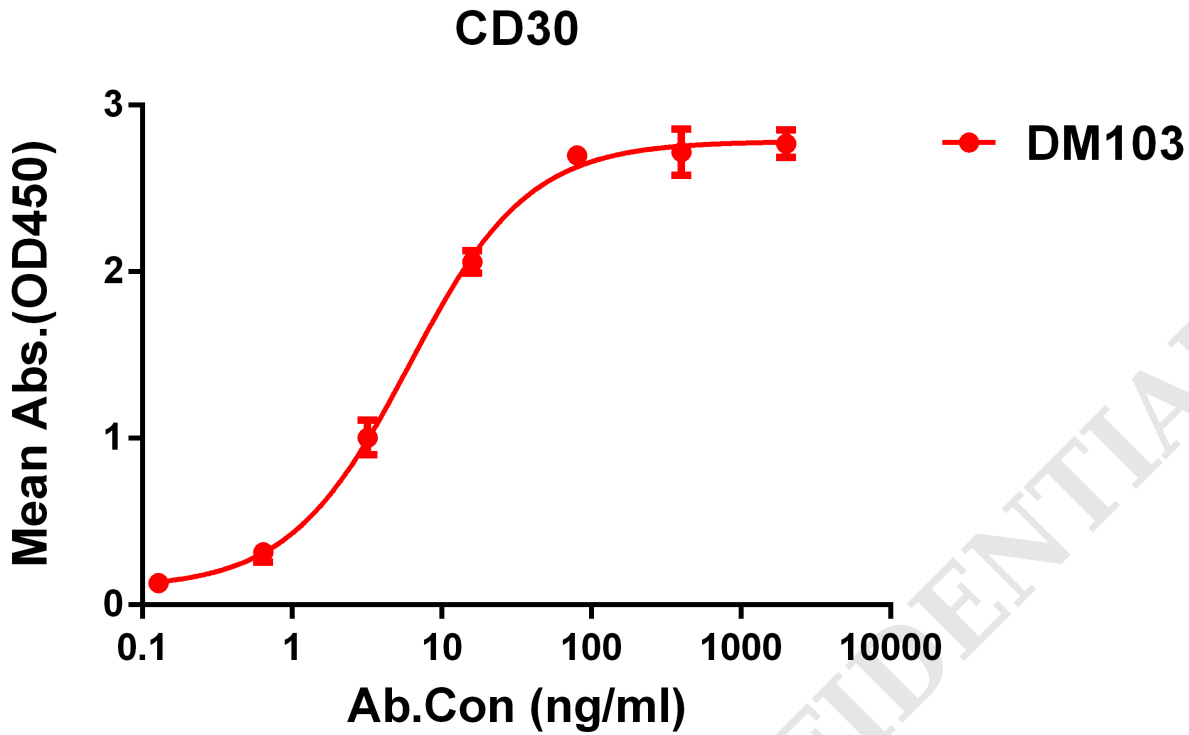


Figure 1. ELISA plate pre-coated by 2 µg/ml (100 µl/well) Human CD30 protein, His tagged protein PME100481 can bind Rabbit anti-CD30 monoclonal antibody (clone: DM103) in a linear range of 0.12-60 ng/ml.

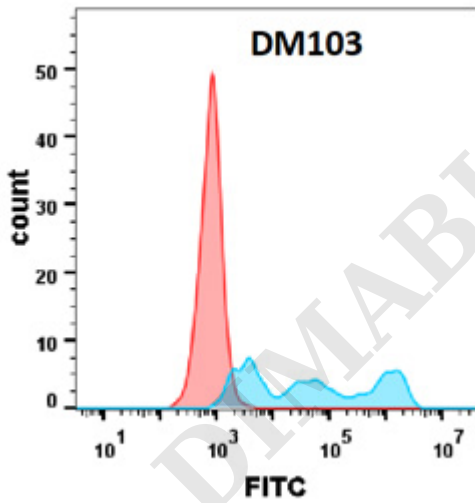


Figure 2. Flow cytometry analysis with Anti-CD30 (DM103) on Expi293 cells transfected with human CD30(Blue histogram) or Expi293 transfected with irrelevant protein (Red histogram).



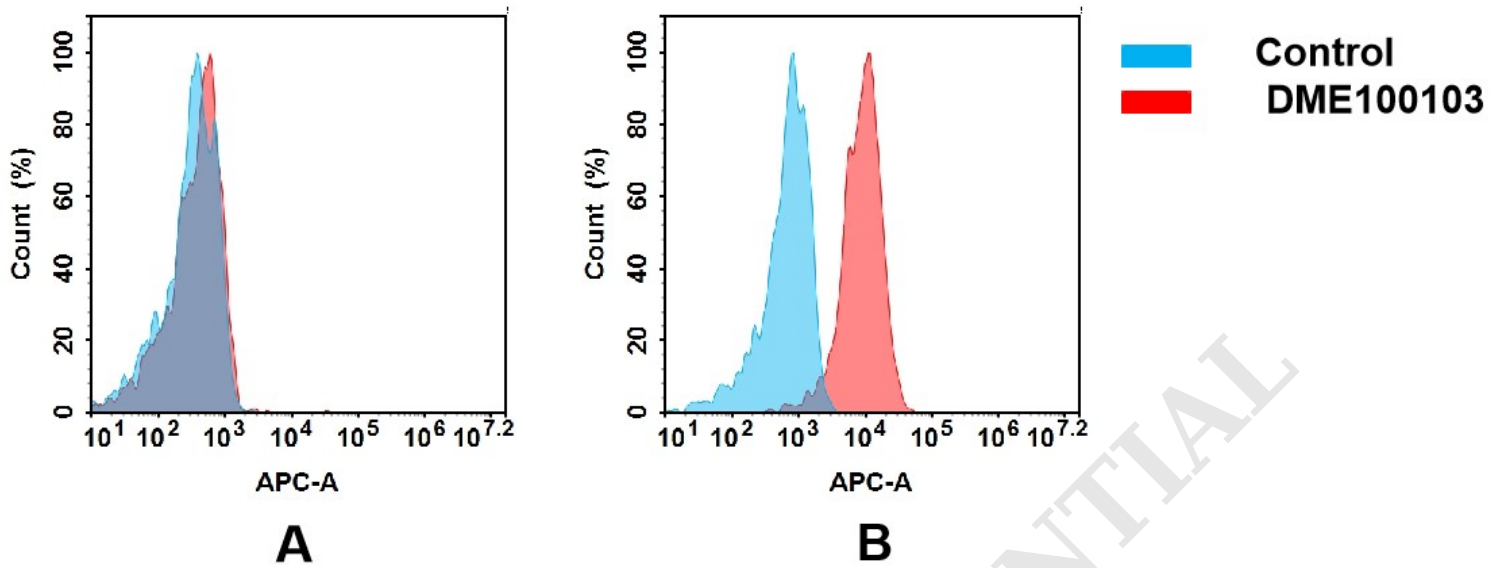


Figure 3. Flow cytometry analysis of antigen binding of rabbit anti-human CD30 mAb(DME100103).

(A) DME100103 does not bind to 293T cells that do not express CD30.

(B) A clear peak shift of DME100103 was seen compared to the control when incubated with CD30-expressing 8226 cells, indicating strong binding of DME100103 to CD30. Antibodies were incubated at 10 μ g/mL.

DIMABIO CONFIDENTIAL

