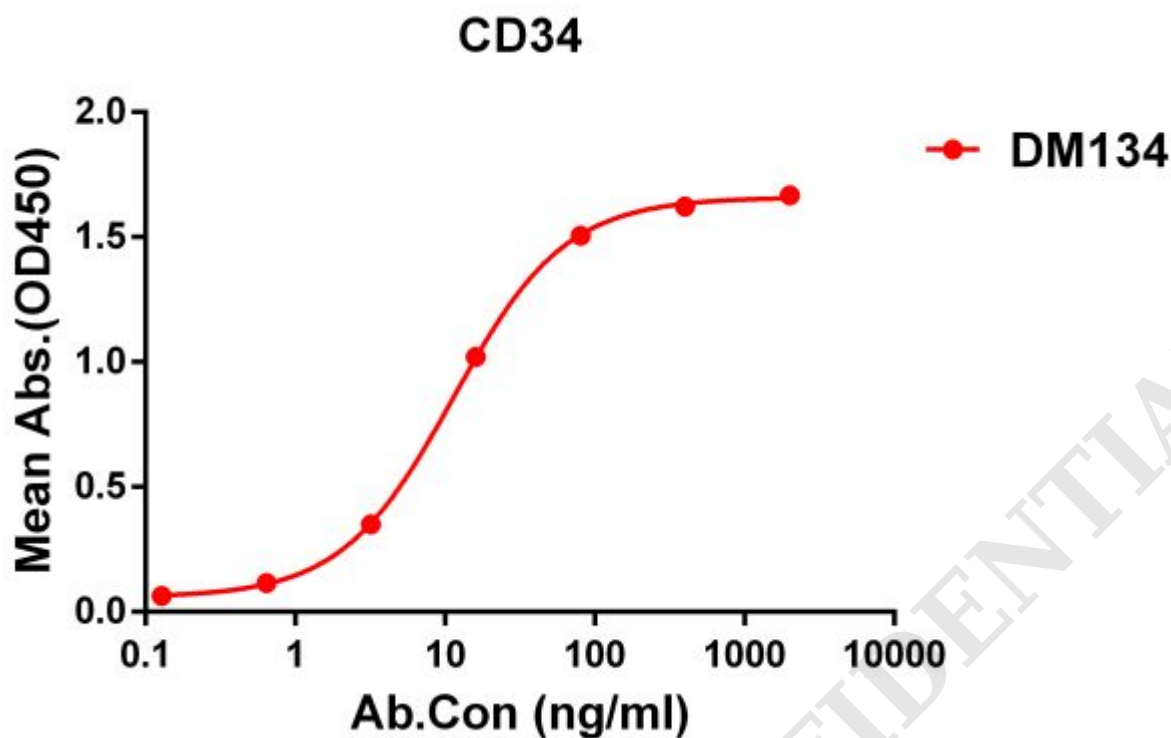


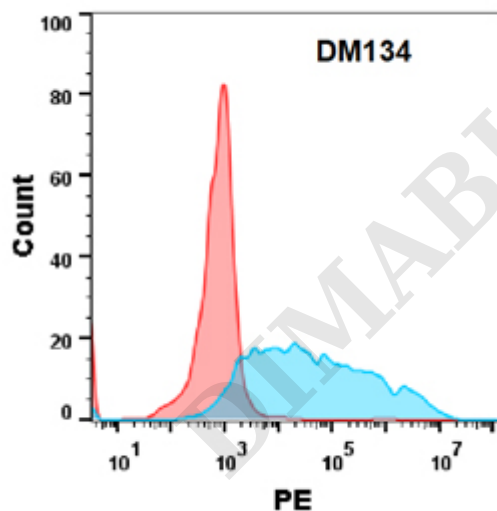
**PRODUCT INFORMATION**

<b>Clone ID</b>	DM134
<b>Target</b>	CD34
<b>Synonyms</b>	CD34
<b>Host Species</b>	Rabbit
<b>Description</b>	Anti-CD34 antibody(DM134); Rabbit mAb
<b>Delivery</b>	In Stock
<b>Uniprot ID</b>	P28906
<b>IgG type</b>	Rabbit IgG
<b>Clonality</b>	Monoclonal
<b>Reactivity</b>	Human
<b>Applications</b>	ELISA; Flow Cyt
<b>Recommended Dilutions</b>	ELISA 1:5000-10000; Flow Cyt 1:100
<b>Purification</b>	Purified from cell culture supernatant by affinity chromatography
<b>Formulation &amp; Reconstitution</b>	Lyophilized from sterile PBS, pH 7.4. Normally 5% - 8% trehalose is added as protectants before lyophilization. Please see Certificate of Analysis for specific instructions of reconstitution.
<b>Storage &amp; Shipping</b>	Store at -20°C to -80°C for 12 months in lyophilized form. After reconstitution, if not intended for use within a month, aliquot and store at -80°C (Avoid repeated freezing and thawing). Lyophilized proteins are shipped at ambient temperature.
<b>Background</b>	The protein encoded by this gene may play a role in the attachment of stem cells to the bone marrow extracellular matrix or to stromal cells. This single-pass membrane protein is highly glycosylated and phosphorylated by protein kinase C. Two transcript variants encoding different isoforms have been found for this gene.
<b>Usage</b>	Research use only
<b>Conjugate</b>	Unconjugated





**Figure 1.** ELISA plate pre-coated by 1  $\mu$ g/ml (100  $\mu$ l/well) Human CD34 protein, His tagged protein ([getskuurl sku="PME100469"]) can bind Rabbit anti-CD34 monoclonal antibody(clone: **DM134**) in a linear range of 0.2-12 ng/ml.



**Figure 2.** Flow cytometry analysis with Anti-CD34 (**DM134**) on Expi293 cells transfected with human CD34 (Blue histogram) or Expi293 transfected with irrelevant protein (Red histogram).

