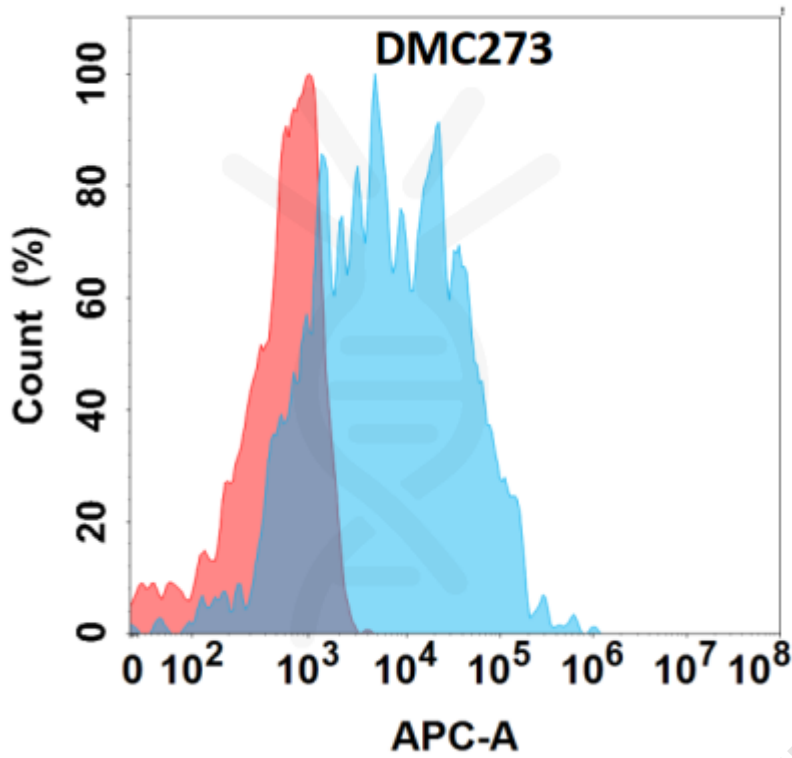


**PRODUCT INFORMATION**

<b>Clone ID</b>	DMC273
<b>Target</b>	CD36
<b>Synonyms</b>	BDPLT10; CHDS7; FAT; GP3B; GP4; GPIV; PASIV; SCARB3
<b>Host Species</b>	Rabbit
<b>Description</b>	Anti-CD36 antibody(DMC273); IgG1 Chimeric mAb
<b>Delivery</b>	In Stock
<b>Uniprot ID</b>	P16671
<b>IgG type</b>	Rabbit/Human Fc chimeric IgG1
<b>Clonality</b>	Monoclonal
<b>Reactivity</b>	Human
<b>Applications</b>	Flow Cyt
<b>Recommended Dilutions</b>	Flow Cyt 1:100
<b>Purification</b>	Purified from cell culture supernatant by affinity chromatography
<b>Formulation &amp; Reconstitution</b>	Lyophilized from sterile PBS, pH 7.4. Normally 5 % - 8% trehalose is added as protectants before lyophilization. Please see Certificate of Analysis for specific instructions of reconstitution.
<b>Storage &amp; Shipping</b>	Store at -20°C to -80°C for 12 months in lyophilized form. After reconstitution, if not intended for use within a month, aliquot and store at -80°C (Avoid repeated freezing and thawing). Lyophilized proteins are shipped at ambient temperature.
<b>Background</b>	The protein encoded by this gene is the fourth major glycoprotein of the platelet surface and serves as a receptor for thrombospondin in platelets and various cell lines. Since thrombospondins are widely distributed proteins involved in a variety of adhesive processes; this protein may have important functions as a cell adhesion molecule. It binds to collagen; thrombospondin; anionic phospholipids and oxidized LDL. It directly mediates cytoadherence of Plasmodium falciparum parasitized erythrocytes and it binds long chain fatty acids and may function in the transport and/or as a regulator of fatty acid transport. Mutations in this gene cause platelet glycoprotein deficiency. Multiple alternatively spliced transcript variants have been found for this gene.
<b>Usage</b>	Research use only
<b>Conjugate</b>	Unconjugated





**Figure 1.** Flow cytometry analysis with Anti-CD36 (DMC273) on Expi293 cells transfected with human CD36 (Blue histogram) or Expi293 transfected with irrelevant protein (Red histogram).

