

PRODUCT INFORMATION

Clone ID	DM211
Target	CD43
Synonyms	CD43; GALGP; GPL115; LSN
Host Species	Rabbit
Description	Anti-CD43 antibody(DM211); Rabbit mAb
Delivery	In Stock
Uniprot ID	P16150
IgG type	Rabbit IgG
Clonality	Monoclonal
Reactivity	Human
Applications	ELISA; Flow Cyt
Recommended Dilutions	ELISA 1:5000-10000; Flow Cyt 1:100
Purification	Purified from cell culture supernatant by affinity chromatography
Formulation & Reconstitution	Lyophilized from sterile PBS, pH 7.4. Normally 5 % - 8% trehalose is added as protectants before lyophilization. Please see Certificate of Analysis for specific instructions of reconstitution.
Storage & Shipping	Store at -20°C to -80°C for 12 months in lyophilized form. After reconstitution, if not intended for use within a month, aliquot and store at -80°C (Avoid repeated freezing and thawing). Lyophilized proteins are shipped at ambient temperature.
Background	This gene encodes a highly sialylated glycoprotein that functions in antigen-specific activation of T cells; and is found on the surface of thymocytes; T lymphocytes; monocytes; granulocytes; and some B lymphocytes. It contains a mucin-like extracellular domain; a transmembrane region and a carboxy-terminal intracellular region. The extracellular domain has a high proportion of serine and threonine residues; allowing extensive O-glycosylation; and has one potential N-glycosylation site; while the carboxy-terminal region has potential phosphorylation sites that may mediate transduction of activation signals. Different glycoforms of this protein have been described. In stimulated immune cells; proteolytic cleavage of the extracellular domain occurs in some cell types; releasing a soluble extracellular fragment. Defects in expression of this gene are associated with Wiskott-Aldrich syndrome. [provided by RefSeq; Sep 2017]
Usage	Research use only
Conjugate	Unconjugated



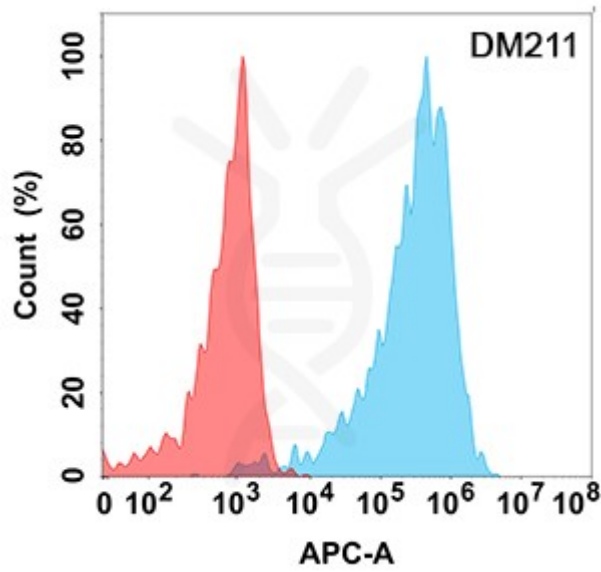


Figure 1. Flow cytometry analysis with Anti-CD43 (DM211) on Expi293 cells transfected with human CD43 (Blue histogram) or Expi293 transfected with irrelevant protein (Red histogram).

DIMABIO CONFIDENTIAL

