

PRODUCT INFORMATION

Clone ID	DM161
Target	CD5
Synonyms	CD5;LEU1
Host Species	Rabbit
Description	Anti-CD5 antibody(DM161); Rabbit mAb
Delivery	In Stock
Uniprot ID	P06127
IgG type	Rabbit IgG
Clonality	Monoclonal
Reactivity	Human
Applications	ELISA; Flow Cyt
Recommended Dilutions	ELISA 1:5000-10000; Flow Cyt 1:100
Purification	Purified from cell culture supernatant by affinity chromatography
Formulation & Reconstitution	Lyophilized from sterile PBS, pH 7.4. Normally 5 % - 8% trehalose is added as protectants before lyophilization. Please see Certificate of Analysis for specific instructions of reconstitution.
Storage & Shipping	Store at -20°C to -80°C for 12 months in lyophilized form. After reconstitution, if not intended for use within a month, aliquot and store at -80°C (Avoid repeated freezing and thawing). Lyophilized proteins are shipped at ambient temperature.
Background	This gene encodes a member of the scavenger receptor cysteine-rich (SRCR) superfamily. Members of this family are secreted or membrane-anchored proteins mainly found in cells associated with the immune system. This protein is a type-I transmembrane glycoprotein found on the surface of thymocytes; T lymphocytes and a subset of B lymphocytes. The encoded protein contains three SRCR domains and may act as a receptor to regulate T-cell proliferation. Alternative splicing results in multiple transcript variants encoding different isoforms.
Usage	Research use only
Conjugate	Unconjugated



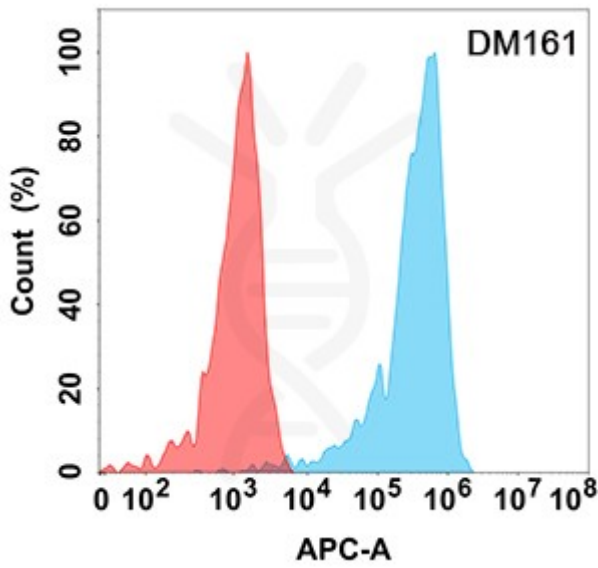


Figure 1. Flow cytometry analysis with Anti-CD5 (DM161) on Expi293 cells transfected with human CD5 (Blue histogram) or Expi293 transfected with irrelevant protein (Red histogram).

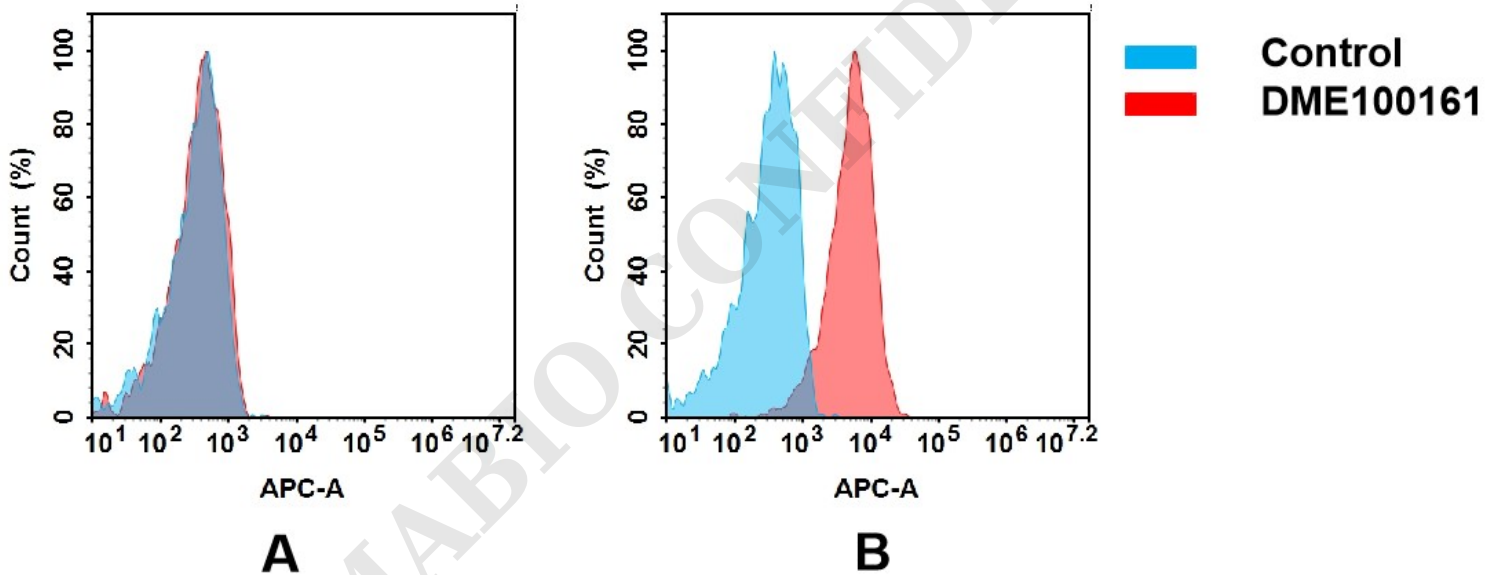


Figure 2. Flow cytometry analysis of antigen binding of rabbit anti-human CD5 mAb(DME100161).

(A) DME100161 does not bind to 293T cells that do not express CD5.

(B) A clear peak shift of DME100161 was seen compared to the control when incubated with CD5-expressing Jurkat cells, indicating strong binding of DME100161 to CD5. Antibodies were incubated at 10 µg/mL.

