

PRODUCT INFORMATION

Clone ID	DMC439
Target	CD62L
Synonyms	CD62L; LAM1; LECAM1; LEU8; LNHR; LSEL; LYAM1; PLNHR; TQ1
Host Species	Rabbit
Description	Anti-CD62L antibody(DMC439); IgG1 Chimeric mAb
Delivery	In Stock
Uniprot ID	P14151
IgG type	Rabbit/Human Fc chimeric IgG1
Clonality	Monoclonal
Reactivity	Human
Applications	Flow Cyt
Recommended Dilutions	Flow Cyt 1:100
Purification	Purified from cell culture supernatant by affinity chromatography
Formulation & Reconstitution	Lyophilized from sterile PBS, pH 7.4. Normally 5 % - 8% trehalose is added as protectants before lyophilization. Please see Certificate of Analysis for specific instructions of reconstitution.
Storage & Shipping	Store at -20°C to -80°C for 12 months in lyophilized form. After reconstitution, if not intended for use within a month, aliquot and store at -80°C (Avoid repeated freezing and thawing). Lyophilized proteins are shipped at ambient temperature.
Background	This gene encodes a cell surface adhesion molecule that belongs to a family of adhesion:homing receptors. The encoded protein contains a C-type lectin-like domain; a calcium-binding epidermal growth factor-like domain; and two short complement-like repeats. The gene product is required for binding and subsequent rolling of leucocytes on endothelial cells; facilitating their migration into secondary lymphoid organs and inflammation sites. Single-nucleotide polymorphisms in this gene have been associated with various diseases including immunoglobulin A nephropathy. Alternatively spliced transcript variants have been found for this gene.
Usage	Research use only



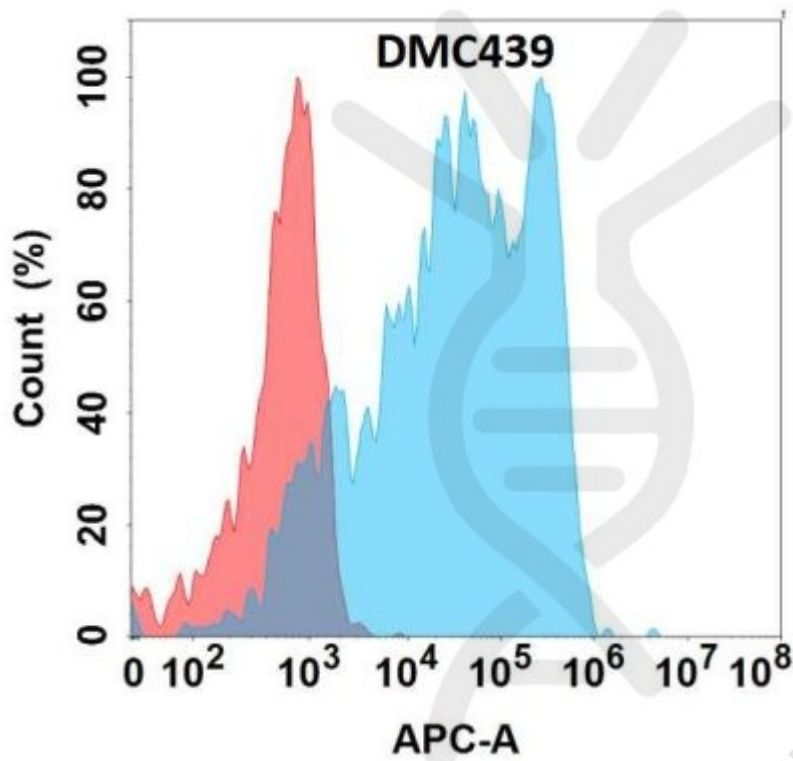


Figure 1. Flow cytometry analysis with Anti-CD62L (DMC439) on Expi293 cells transfected with human CD62L (Blue histogram) or Expi293 transfected with irrelevant protein (Red histogram).

