

PRODUCT INFORMATION

Common Name	RO5541077-IG-7596
Synonyms	AGM6;B29;IGB
Applications	ELISA, Flow Cyt
Recommended Dilutions	ELISA 1:5000-10000, Flow Cyt 1:100
Formulation & Reconstitution	Lyophilized from sterile PBS, pH 7.4. Normally 5% - 8% trehalose is added as protectants before lyophilization. Please see Certificate of Analysis for specific instructions of reconstitution.
Host Species	Chimeric Rabbit
IgG type	IgG
Reactivity	Human
Target	CD79B
Uniprot ID	P40259
Description	Anti-CD79B (polatuzumab biosimilar) antibody, Rabbit IgG Chimeric mAb
Delivery	In Stock
Storage & Shipping	Store at -20°C to -80°C for 12 months in lyophilized form. After reconstitution, if not intended for use within a month, aliquot and store at -80°C (Avoid repeated freezing and thawing). Lyophilized antibodies are shipped at ambient temperature.
Background	Research grade biosimilar. Not for use in therapeutic or diagnostic procedures for humans or animals.
Usage	Research use only
Conjugate	Unconjugated



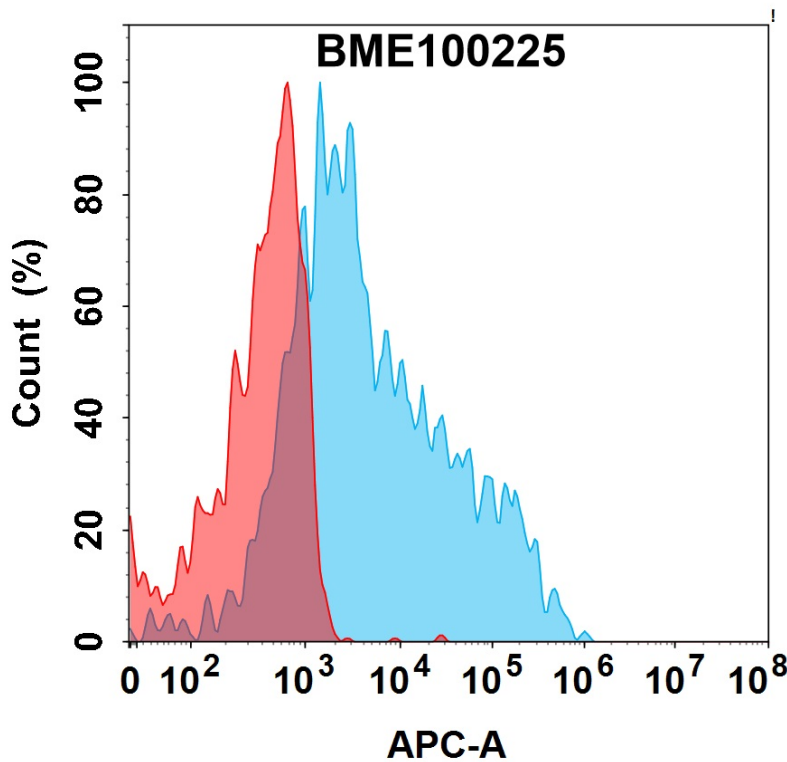


Figure 1. Flow cytometry analysis with 15µg/mL Anti-CD79B (polatuzumab biosimilar) antibody, Rabbit IgG Chimeric mAb (BME100225) on Expi293 cells transfected with Human CD79B protein (Blue histogram) or Expi293 transfected with irrelevant protein (Red histogram).

Anti-CD79B (polatuzumab biosimilar) antibody, Rabbit IgG Chimeric mAb ELISA

0.2 µg of Human CD79B, hFc tagged protein per well

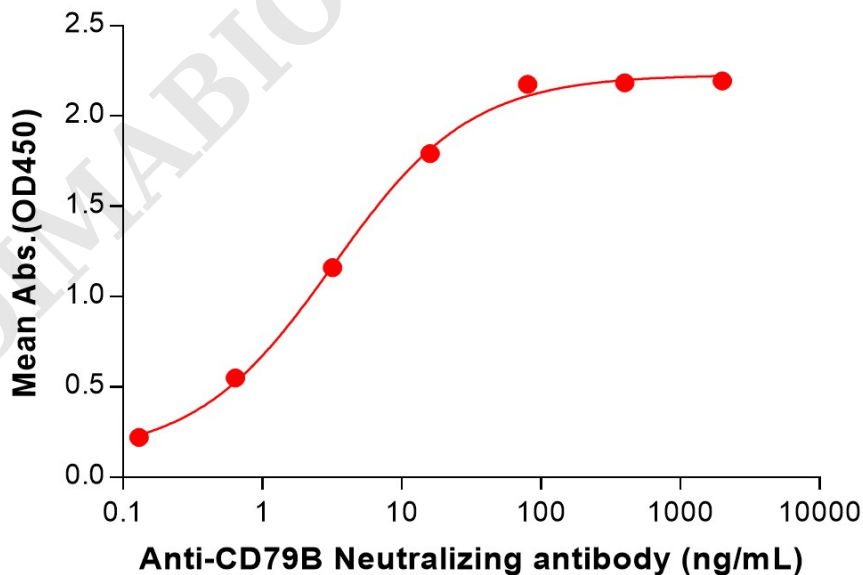


Figure 2. ELISA plate pre-coated by 2 µg/mL (100 µL/well) Human CD79B Protein, hFc Tag (PME101089) can bind Anti-CD79B (polatuzumab biosimilar) antibody, Rabbit IgG Chimeric mAb (BME100225) in a linear range of 0.13–80 ng/mL.

