

**PRODUCT INFORMATION**

<b>Clone ID</b>	2H8
<b>Target</b>	CD98
<b>Synonyms</b>	SLC3A2;F2;MDU1;4F2HC;4T2HC;NACAE;CD98HC
<b>Host Species</b>	Rabbit
<b>Description</b>	Anti-CD98 antibody(2H8); IgG1 Chimeric mAb
<b>Delivery</b>	In Stock
<b>Uniprot ID</b>	P08195
<b>IgG type</b>	Rabbit/Human Fc chimeric IgG1
<b>Clonality</b>	Monoclonal
<b>Reactivity</b>	Human
<b>Applications</b>	Flow Cyt
<b>Recommended Dilutions</b>	Flow Cyt 1/100
<b>Purification</b>	Purified from cell culture supernatant by affinity chromatography
<b>Formulation &amp; Reconstitution</b>	Lyophilized from sterile PBS, pH 7.4. Normally 5 % - 8% trehalose is added as protectants before lyophilization. Please see Certificate of Analysis for specific instructions of reconstitution.
<b>Storage &amp; Shipping</b>	Store at -20°C to -80°C for 12 months in lyophilized form. After reconstitution, if not intended for use within a month, aliquot and store at -80°C (Avoid repeated freezing and thawing). Lyophilized proteins are shipped at ambient temperature.
<b>Background</b>	This gene is a member of the solute carrier family and encodes a cell surface, transmembrane protein. The protein exists as the heavy chain of a heterodimer, covalently bound through di-sulfide bonds to one of several possible light chains. The encoded transporter plays a role in regulation of intracellular calcium levels and transports L-type amino acids. Alternatively spliced transcript variants, encoding different isoforms, have been characterized. [provided by RefSeq, Nov 2010]
<b>Usage</b>	Research use only
<b>Conjugate</b>	Unconjugated



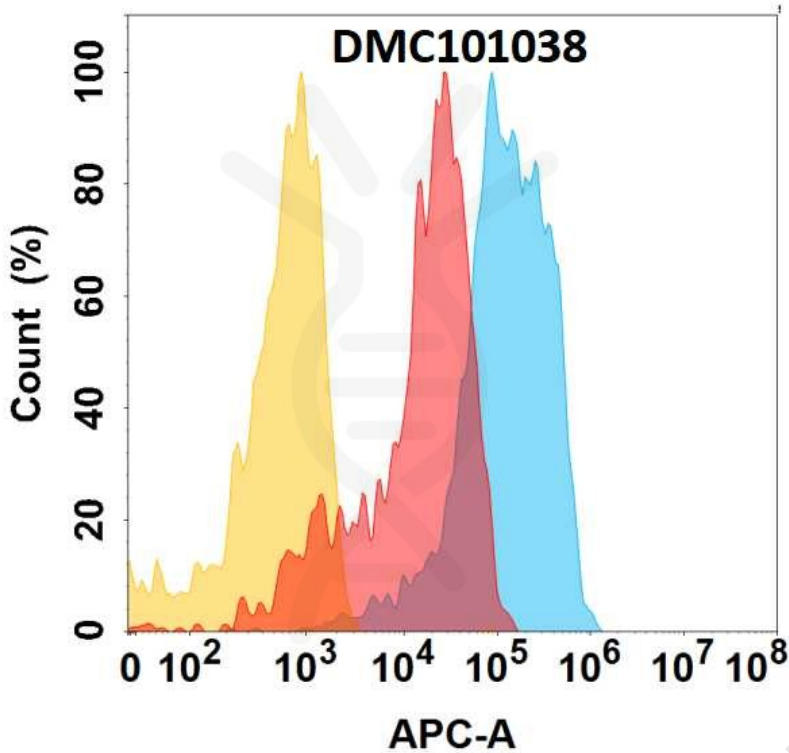


Figure 1. CD98 protein is expressed on the surface of Expi293 cell membrane. Flow cytometry analysis with Anti-CD98 (2H8) mAb on Expi293 cells transfected with human CD98 (Blue histogram) or Expi293 transfected with irrelevant protein (Red histogram), and Isotype antibody on Expi293 transfected with irrelevant protein (Orange histogram).

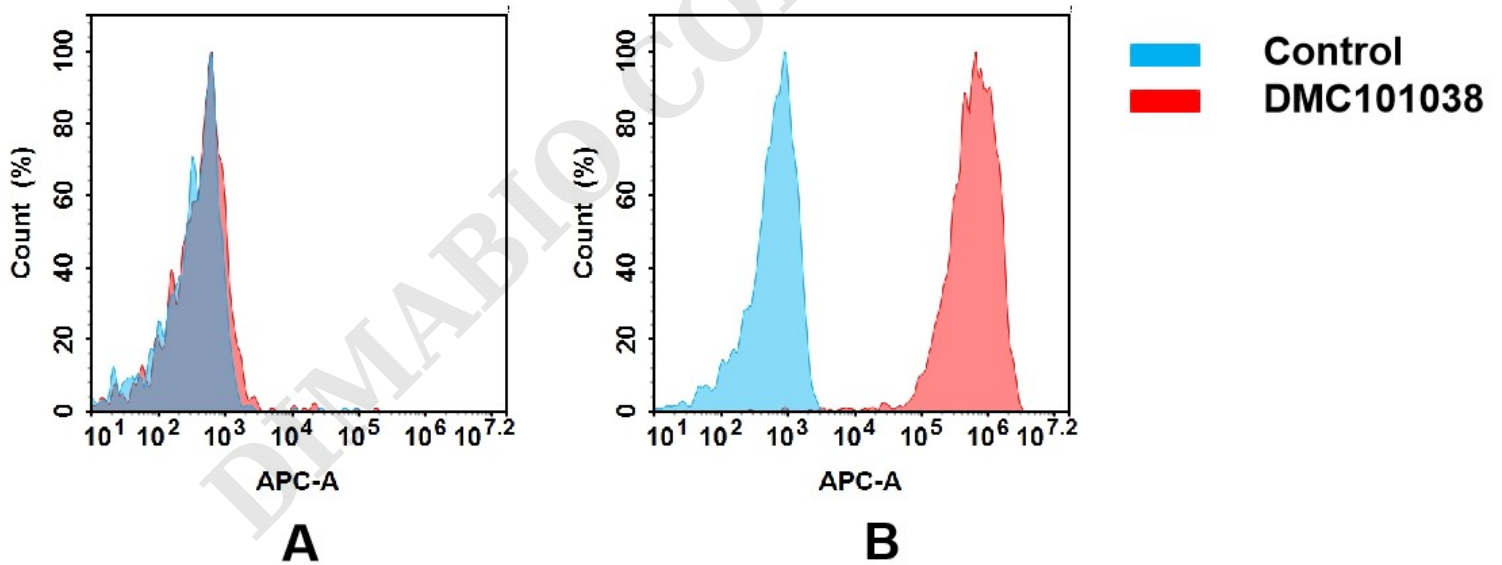


Figure 2. Flow cytometry analysis of antigen binding of anti-human CD98 mAb(DMC101038).

(A) DMC101038 does not bind to CHO-S cells that do not express CD98.

(B) A clear peak shift of DMC101038 was seen compared to the control when incubated with CD98-expressing HeLa cells, indicating strong binding of DMC101038 to CD98. Antibodies were incubated at 5  $\mu$ g/mL.

