

**PRODUCT INFORMATION**

<b>Common Name</b>	ARB102
<b>Conjugate</b>	Unconjugated
<b>Synonyms</b>	Cadherin-17
<b>Applications</b>	ELISA, Flow Cyt
<b>Recommended Dilutions</b>	ELISA 1:5000-10000, Flow Cyt 1:100
<b>Formulation &amp; Reconstitution</b>	Lyophilized from sterile PBS, pH 7.4. Normally 5% - 8% trehalose is added as protectants before lyophilization. Please see Certificate of Analysis for specific instructions of reconstitution.
<b>Host Species</b>	Humanized
<b>IgG type</b>	IgG1
<b>Reactivity</b>	Human
<b>Target</b>	CDH17
<b>Uniprot ID</b>	Q12864
<b>Description</b>	Anti-CDH17(ARB102 biosimilar) mAb
<b>Delivery</b>	In Stock
<b>Storage &amp; Shipping</b>	Store at -20°C to -80°C for 12 months in lyophilized form. After reconstitution, if not intended for use within a month, aliquot and store at -80°C (Avoid repeated freezing and thawing). Lyophilized antibodies are shipped at ambient temperature.
<b>Background</b>	Research grade biosimilar. Not for use in therapeutic or diagnostic procedures for humans or animals.
<b>Usage</b>	Research use only
<b>DIMA Disclaimer</b>	All DIMA recombinant antibodies are genuinely generated by DIMA Biotech. They are all under patent application. Any protein sequencing or reverse engineering attempt is prohibited. We are actively scrutinizing all patent application to ensure no IP infringement.



## Anti-CDH17(ARB102 biosimilar) mAb ELISA

0.2  $\mu$ g of Human CDH17, His tagged protein per well

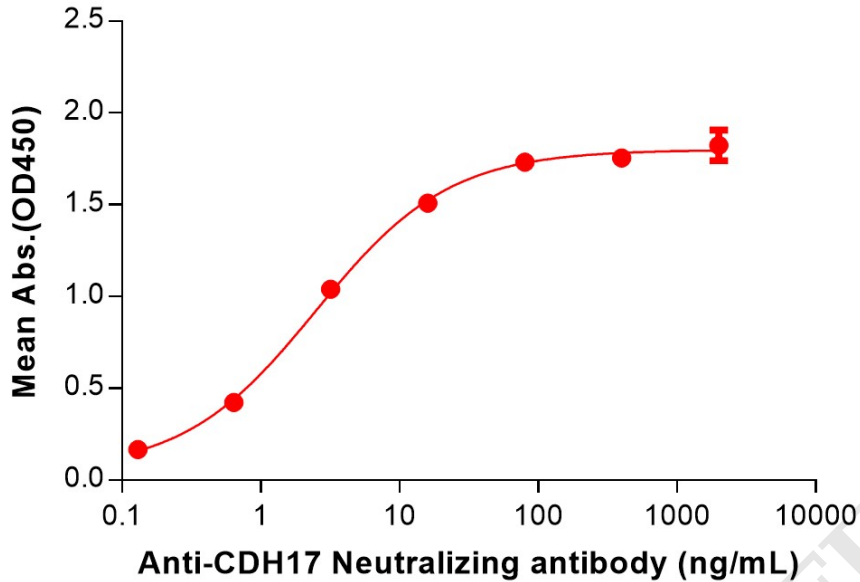


Figure 1. ELISA plate pre-coated by 2  $\mu$ g/mL (100  $\mu$ L/well) Human CDH17 Protein, His Tag (PME100801) can bind Anti-CDH17(ARB102 biosimilar) mAb (BME100198) in a linear range of 0.64-16 ng/mL.

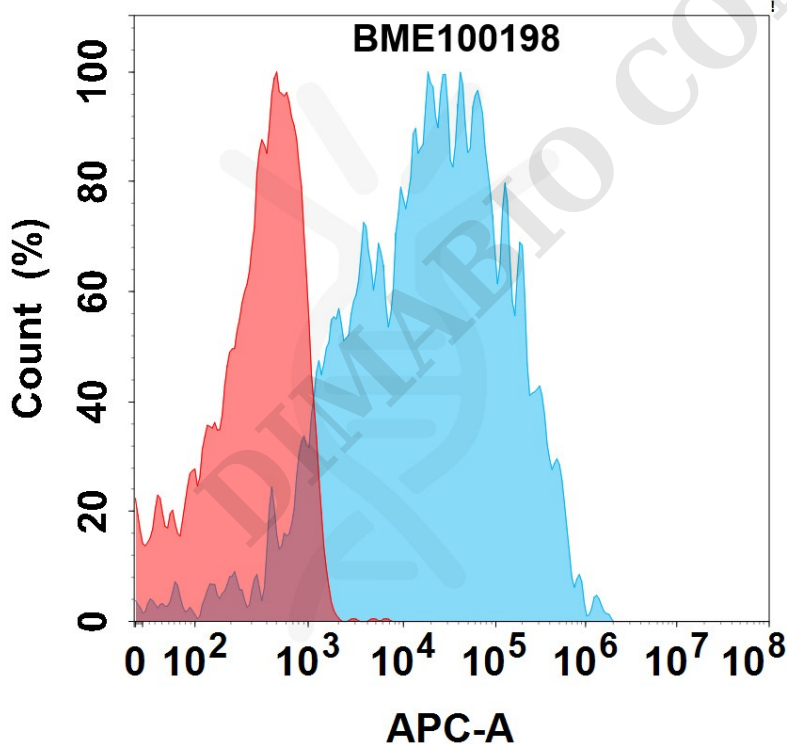


Figure 2. Flow cytometry analysis with 1 $\mu$ g/mL Anti-CDH17(ARB102 biosimilar) mAb (BME100198) on Expi293 cells transfected with Human CDH17 protein (Blue histogram) or Expi293 transfected with irrelevant protein (Red histogram).



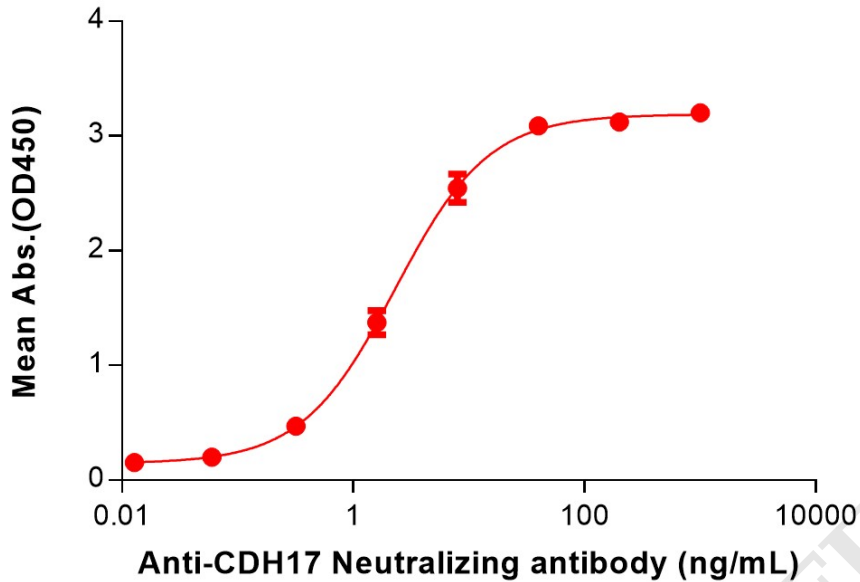
**Anti-CDH17(ARB102 biosimilar) mAb ELISA**0.05  $\mu$ g of Cynomolgus CDH17, His tagged protein per well

Figure 3. ELISA plate pre-coated by 2  $\mu$ g/mL (100  $\mu$ L/well) Cynomolgus CDH17 Protein, His Tag (PME-C100029) can bind Anti-CDH17(ARB102 biosimilar) mAb (BME100198) in a linear range of 3.20–400 ng/mL.

