

PRODUCT INFORMATION

Common Name	CDH17-ADC-653-h43
Synonyms	Cadherin-17
Applications	ELISA, Flow Cyt
Recommended Dilutions	ELISA 1:5000-10000, Flow Cyt 1:100
Formulation & Reconstitution	Lyophilized from sterile PBS, pH 7.4. Normally 5% - 8% trehalose is added as protectants before lyophilization. Please see Certificate of Analysis for specific instructions of reconstitution.
Host Species	Humanized
IgG type	IgG1
Reactivity	Human
Target	CDH17
Uniprot ID	Q12864
Description	Anti-CDH17(TORL-3-600 biosimilar) mAb
Delivery	In Stock
Storage & Shipping	Store at -20°C to -80°C for 12 months in lyophilized form. After reconstitution, if not intended for use within a month, aliquot and store at -80°C (Avoid repeated freezing and thawing). Lyophilized antibodies are shipped at ambient temperature.
Background	Research grade biosimilar. Not for use in therapeutic or diagnostic procedures for humans or animals.
Usage	Research use only
Conjugate	Unconjugated

CONFIDENTIAL



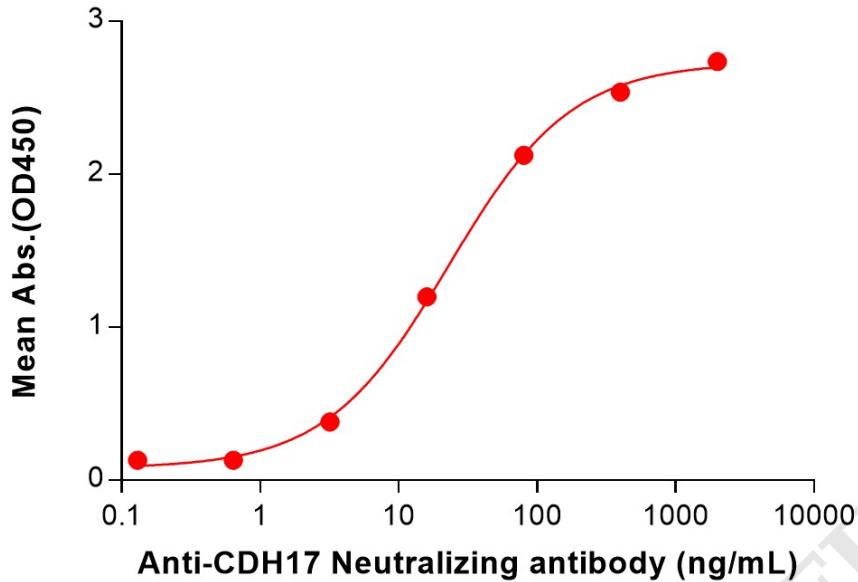
Anti-CDH17(TORL-3-600 biosimilar) mAb ELISA0.2 μ g of Human CDH17, His tagged protein per well

Figure 1. ELISA plate pre-coated by 2 μ g/mL (100 μ L/well) Human CDH17 Protein, His Tag (PME100801) can bind Anti-CDH17(TORL-3-600 biosimilar) mAb (BME100233) in a linear range of 3.20-400 ng/mL.

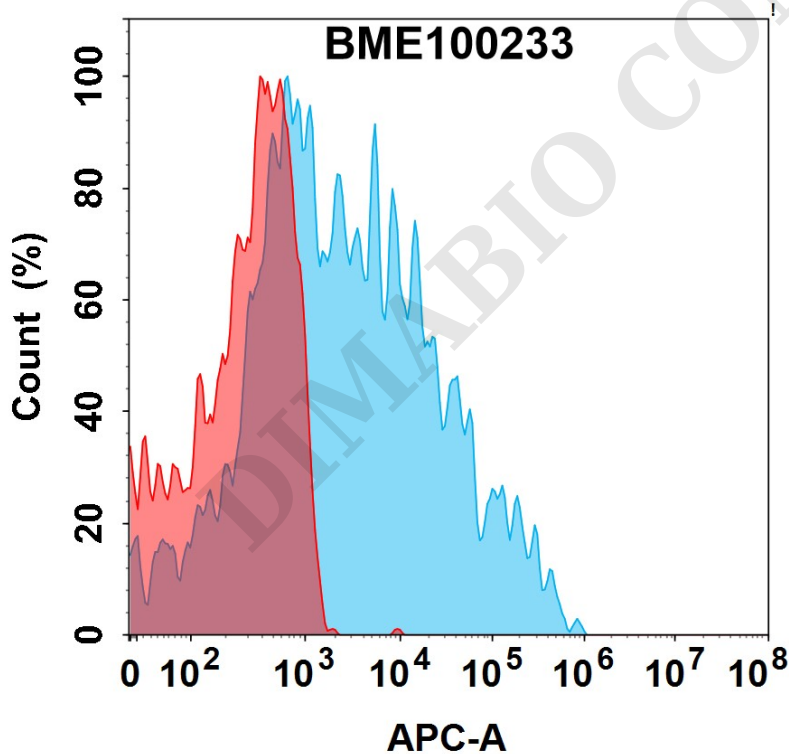


Figure 2. Flow cytometry analysis with 1 μ g/mL Anti-CDH17(TORL-3-600 biosimilar) mAb (BME100233) on Expi293 cells transfected with Human CDH17 protein (Blue histogram) or Expi293 transfected with irrelevant protein (Red histogram).

