

PRODUCT INFORMATION

Clone ID	DMC486
Target	CD23
Synonyms	BLAST-2; CD23; CD23A; CLEC4J; FCE2; IGEBF
Host Species	Rabbit
Description	Anti-CDH23 antibody(DMC486); IgG1 Chimeric mAb
Delivery	In Stock
Uniprot ID	P06734
IgG type	Rabbit/Human Fc chimeric IgG1
Clonality	Monoclonal
Reactivity	Human
Applications	Flow Cyt
Recommended Dilutions	Flow Cyt 1:100
Purification	Purified from cell culture supernatant by affinity chromatography
Formulation & Reconstitution	Lyophilized from sterile PBS, pH 7.4. Normally 5 % - 8% trehalose is added as protectants before lyophilization. Please see Certificate of Analysis for specific instructions of reconstitution.
Storage & Shipping	Store at -20°C to -80°C for 12 months in lyophilized form. After reconstitution, if not intended for use within a month, aliquot and store at -80°C (Avoid repeated freezing and thawing). Lyophilized proteins are shipped at ambient temperature.
Background	The protein encoded by this gene is a B-cell specific antigen; and a low-affinity receptor for IgE. It has essential roles in B cell growth and differentiation; and the regulation of IgE production. This protein also exists as a soluble secreted form; then functioning as a potent mitogenic growth factor. Alternatively spliced transcript variants encoding different isoforms have been described for this gene.[provided by RefSeq; Jul 2011]
Usage	Research use only



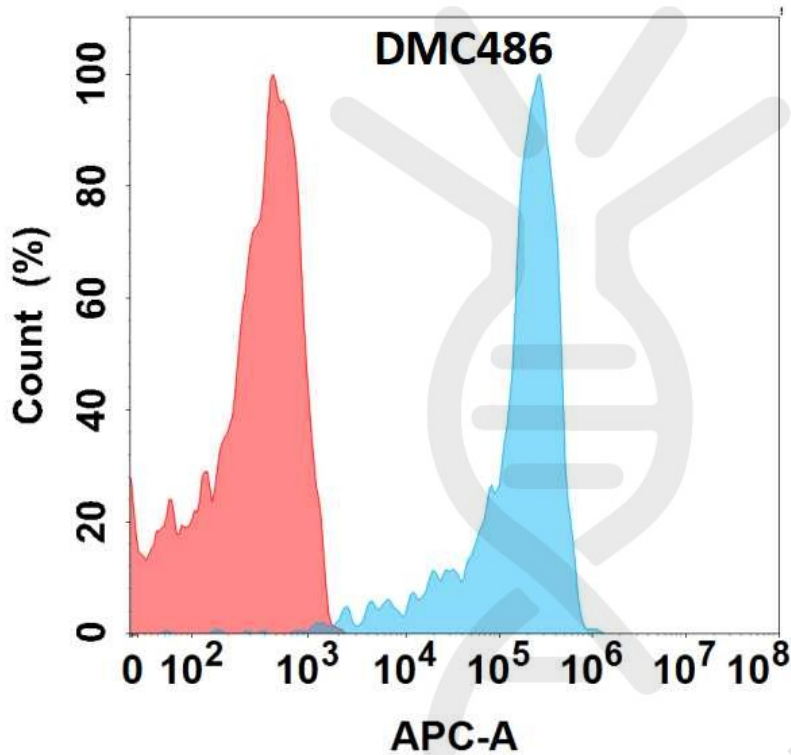


Figure 1. Flow cytometry analysis with Anti-CD23 (DMC486) on Expi293 cells transfected with human CD23 (Blue histogram) or Expi293 transfected with irrelevant protein (Red histogram).

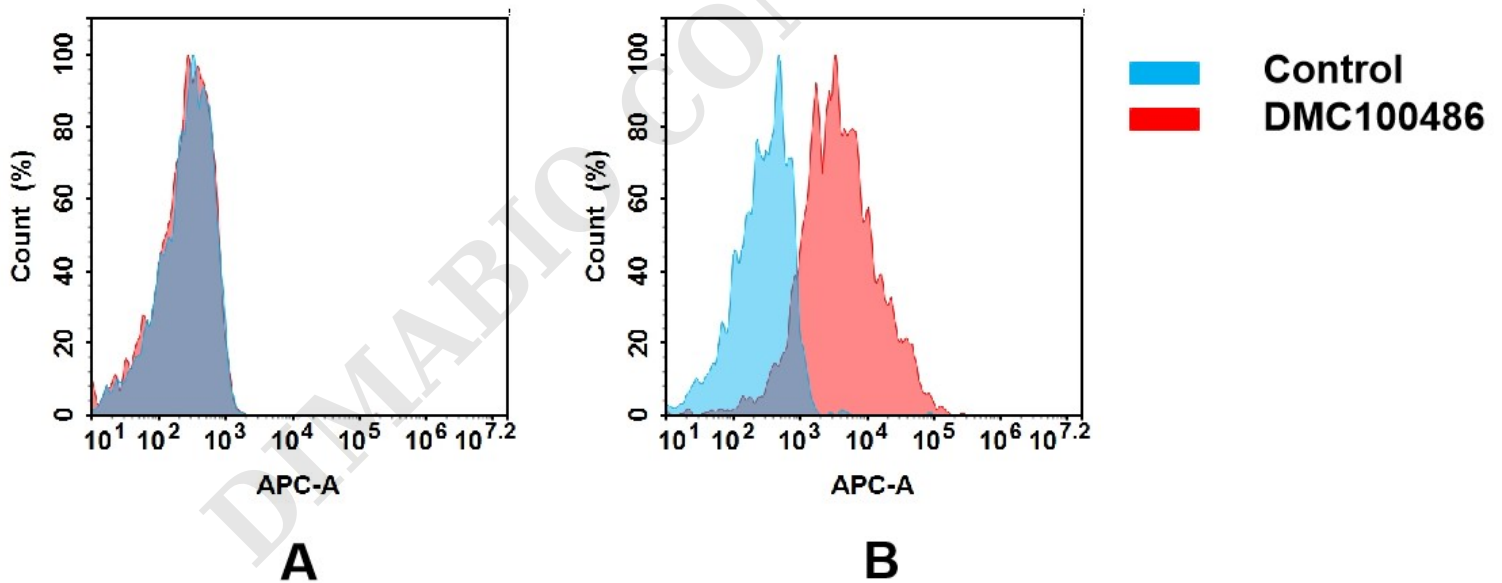


Figure 2. Flow cytometry analysis of antigen binding of anti-human CD23 mAb(DMC100486).

(A) DMC100486 does not bind to Jurkat cells that do not express CD23.

(B) A clear peak shift of DMC100486 was seen compared to the control when incubated with CD23-expressing Raji cells, indicating strong binding of DMC100486 to CD23. Antibodies were incubated at 5 μ g/mL.

