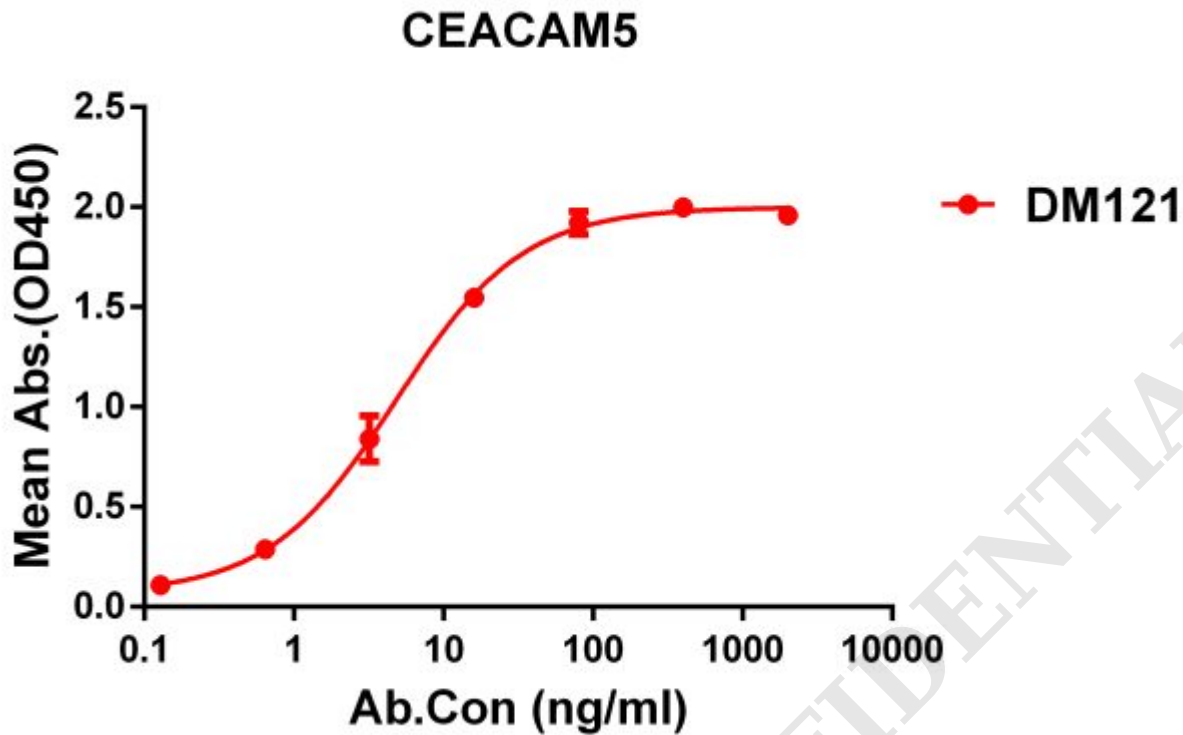


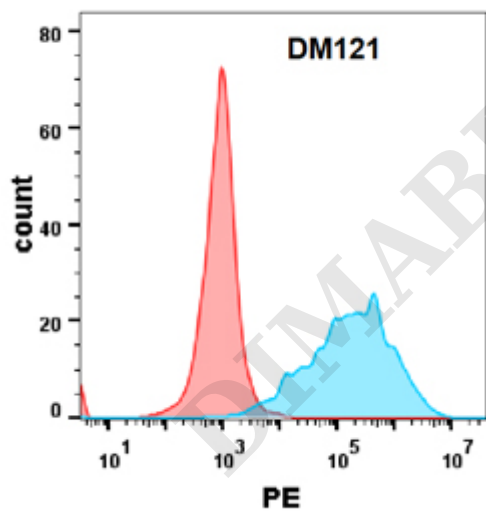
**PRODUCT INFORMATION**

<b>Clone ID</b>	DM121
<b>Target</b>	CEACAM5
<b>Synonyms</b>	CEACAM-5;CD66e;CEA;Meconium antigen 100
<b>Host Species</b>	Rabbit
<b>Description</b>	Anti-CEACAM5 antibody(DM121); Rabbit mAb
<b>Delivery</b>	In Stock
<b>Uniprot ID</b>	P06731
<b>IgG type</b>	Rabbit IgG
<b>Clonality</b>	Monoclonal
<b>Reactivity</b>	Human
<b>Applications</b>	ELISA; Flow Cyt
<b>Recommended Dilutions</b>	ELISA 1:5000-10000; Flow Cyt 1:100
<b>Purification</b>	Purified from cell culture supernatant by affinity chromatography
<b>Formulation &amp; Reconstitution</b>	Lyophilized from sterile PBS, pH 7.4. Normally 5 % - 8% trehalose is added as protectants before lyophilization. Please see Certificate of Analysis for specific instructions of reconstitution.
<b>Storage &amp; Shipping</b>	Store at -20°C to -80°C for 12 months in lyophilized form. After reconstitution, if not intended for use within a month, aliquot and store at -80°C (Avoid repeated freezing and thawing). Lyophilized proteins are shipped at ambient temperature.
<b>Background</b>	This gene encodes a cell surface glycoprotein that represents the founding member of the carcinoembryonic antigen (CEA) family of proteins. The encoded protein is used as a clinical biomarker for gastrointestinal cancers and may promote tumor development through its role as a cell adhesion molecule. Additionally; the encoded protein may regulate differentiation; apoptosis; and cell polarity. This gene is present in a CEA family gene cluster on chromosome 19. Alternative splicing results in multiple transcript variants.
<b>Usage</b>	Research use only





**Figure 1.** ELISA plate pre-coated by 1  $\mu$ g/ml (100  $\mu$ l/well) Human CEACAM5 protein, His tagged protein ([getskuurl sku="PME100071"]) can bind Rabbit anti-CEACAM5 monoclonal antibody (**clone: DM121**) in a linear range of 0.1-50 ng/ml.



**Figure 2.** Flow cytometry analysis with Anti-CEACAM5 (**DM121**) on Expi293 cells transfected with human CEACAM5(Blue histogram) or Expi293 transfected with irrelevant protein (Red histogram).

