

PRODUCT INFORMATION

| | |
|---|---|
| Common Name | AMG 334,AMG-334,erenumab-aooe |
| Synonyms | CALCRL |
| Applications | Flow Cyt |
| Recommended Dilutions | Flow Cyt 1:100 |
| Formulation & Reconstitution | Lyophilized from sterile PBS, pH 7.4. Normally 5% - 8% trehalose is added as protectants before lyophilization. Please see Certificate of Analysis for specific instructions of reconstitution. |
| Host Species | Homo sapiens |
| IgG type | IgG2 |
| Reactivity | Human |
| Target | CGRPR |
| Uniprot ID | Q16602 |
| Description | Anti-CGRPR(Erenumab biosimilar) mAb |
| Delivery | In Stock |
| Storage & Shipping | Store at -20°C to -80°C for 12 months in lyophilized form. After reconstitution, if not intended for use within a month, aliquot and store at -80°C (Avoid repeated freezing and thawing). Lyophilized proteins are shipped at ambient temperature. |
| Background | Research grade biosimilar. Not for use in therapeutic or diagnostic procedures for humans or animals. |
| Usage | Research use only |
| Conjugate | Unconjugated |

DIMA BIO CONFIDENTIAL



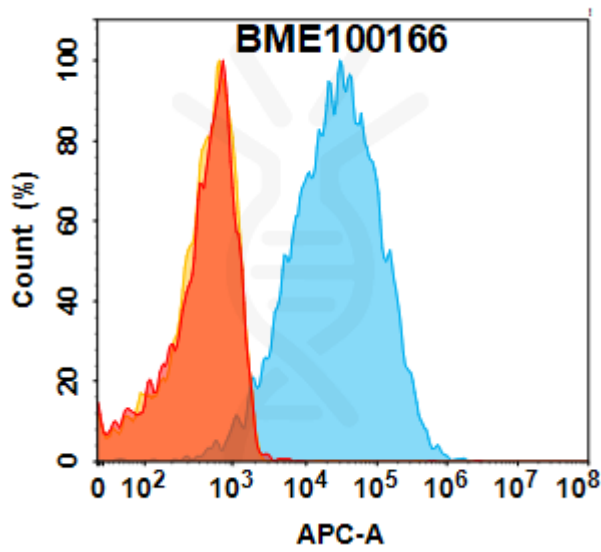


Figure 1. Flow cytometry analysis with 1µg/mL Anti-CGRPR(Erenumab biosimilar) mAb (BME100166) on Expi293 cells transfected with Human CGRPR&RAMP1 protein (Blue histogram) and Expi293 transfected with Human CGRPR protein (Red histogram) or Human RAMP1 protein(Orange histogram).

DIMABIO CONFIDENTIAL

