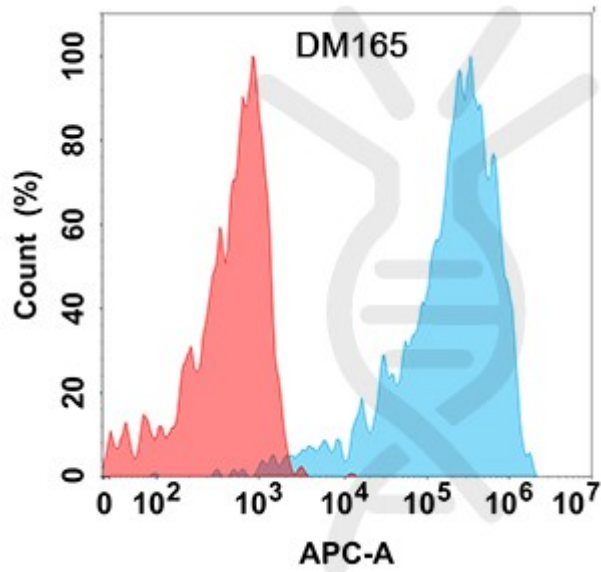


**PRODUCT INFORMATION**

<b>Clone ID</b>	DM165
<b>Target</b>	CLEC12A
<b>Synonyms</b>	CLEC12A;M1CL;CLL-1;CLL1;DCAL2;DCAL-2;CD371
<b>Host Species</b>	Rabbit
<b>Description</b>	Anti-CLEC12A antibody(DM165); Rabbit mAb
<b>Delivery</b>	In Stock
<b>Uniprot ID</b>	Q5QGZ9
<b>IgG type</b>	Rabbit IgG
<b>Clonality</b>	Monoclonal
<b>Reactivity</b>	Human
<b>Applications</b>	ELISA; Flow Cyt
<b>Recommended Dilutions</b>	ELISA 1:5000-10000; Flow Cyt 1:100
<b>Purification</b>	Purified from cell culture supernatant by affinity chromatography
<b>Formulation &amp; Reconstitution</b>	Lyophilized from sterile PBS, pH 7.4. Normally 5 % - 8% trehalose is added as protectants before lyophilization. Please see Certificate of Analysis for specific instructions of reconstitution.
<b>Storage &amp; Shipping</b>	Store at -20°C to -80°C for 12 months in lyophilized form. After reconstitution, if not intended for use within a month, aliquot and store at -80°C (Avoid repeated freezing and thawing). Lyophilized proteins are shipped at ambient temperature.
<b>Background</b>	This gene encodes a member of the C-type lectin:C-type lectin-like domain (CTL:CTLD) superfamily. Members of this family share a common protein fold and have diverse functions; such as cell adhesion; cell-cell signaling; glycoprotein turnover; and roles in inflammation and immune response. The protein encoded by this gene is a negative regulator of granulocyte and monocyte function. Several alternatively spliced transcript variants of this gene have been described; but the full-length nature of some of these variants has not been determined. This gene is closely linked to other CTL:CTLD superfamily members in the natural killer gene complex region on chromosome 12p13.
<b>Usage</b>	Research use only





**Figure 1.** Flow cytometry analysis with Anti-CLEC12A (DM165) on Expi293 cells transfected with human CLEC12A (Blue histogram) or Expi293 transfected with irrelevant protein (Red histogram).

DIMABIO CONFIDENTIAL

