

PRODUCT INFORMATION

Clone ID	DMC469
Target	CLEC9A
Synonyms	CD370; DNDR-1; DNDR1; UNQ9341
Host Species	Rabbit
Description	Anti-CLEC9A antibody(DMC469); IgG1 Chimeric mAb
Delivery	In Stock
Uniprot ID	Q6UXN8
IgG type	Rabbit/Human Fc chimeric IgG1
Clonality	Monoclonal
Reactivity	Human
Applications	Flow Cyt
Recommended Dilutions	Flow Cyt 1:100
Purification	Purified from cell culture supernatant by affinity chromatography
Formulation & Reconstitution	Lyophilized from sterile PBS, pH 7.4. Normally 5% - 8% trehalose is added as protectants before lyophilization. Please see Certificate of Analysis for specific instructions of reconstitution.
Storage & Shipping	Store at -20°C to -80°C for 12 months in lyophilized form. After reconstitution, if not intended for use within a month, aliquot and store at -80°C (Avoid repeated freezing and thawing). Lyophilized proteins are shipped at ambient temperature.
Background	CLEC9A is a group V C-type lectin-like receptor (CLR) that functions as an activation receptor and is expressed on myeloid lineage cells (Huysamen et al.; 2008 [PubMed 18408006]).[supplied by OMIM; Aug 2008]
Usage	Research use only



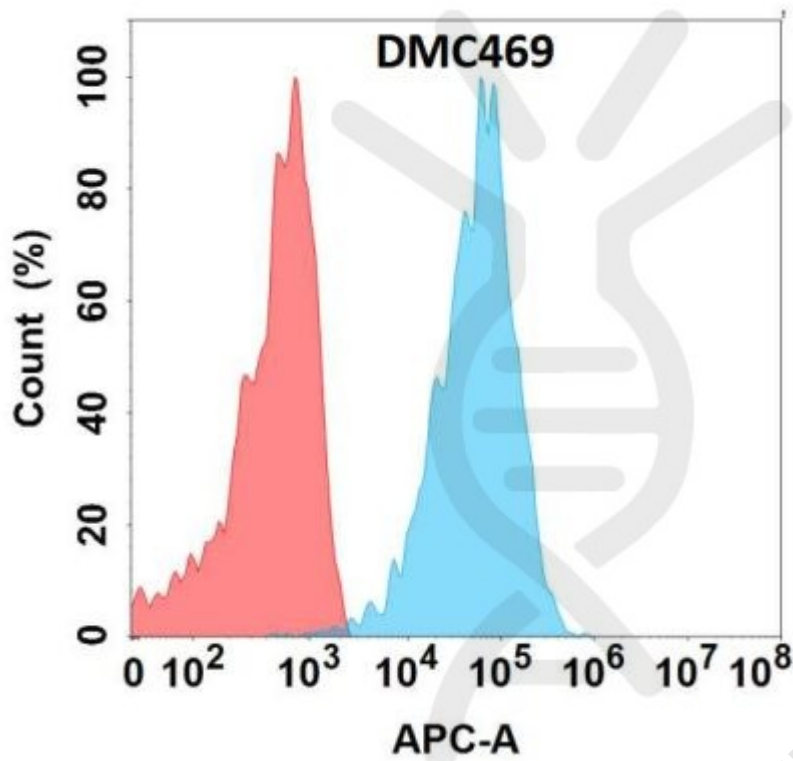


Figure 1. Flow cytometry analysis with Anti-CLEC9A (DMC469) on Expi293 cells transfected with human CLEC9A (Blue histogram) or Expi293 transfected with irrelevant protein (Red histogram).

