

**PRODUCT INFORMATION**

|                                         |                                                                                                                                                                                                                                                       |
|-----------------------------------------|-------------------------------------------------------------------------------------------------------------------------------------------------------------------------------------------------------------------------------------------------------|
| <b>Common Name</b>                      | HuC110-34                                                                                                                                                                                                                                             |
| <b>Synonyms</b>                         | CD355                                                                                                                                                                                                                                                 |
| <b>Applications</b>                     | ELISA, Flow Cyt                                                                                                                                                                                                                                       |
| <b>Recommended Dilutions</b>            | ELISA 1:5000-10000, Flow Cyt 1:100                                                                                                                                                                                                                    |
| <b>Formulation &amp; Reconstitution</b> | Lyophilized from sterile PBS, pH 7.4. Normally 5% - 8% trehalose is added as protectants before lyophilization. Please see Certificate of Analysis for specific instructions of reconstitution.                                                       |
| <b>Host Species</b>                     | Humanized                                                                                                                                                                                                                                             |
| <b>IgG type</b>                         | IgG1 (L115E)                                                                                                                                                                                                                                          |
| <b>Reactivity</b>                       | Human                                                                                                                                                                                                                                                 |
| <b>Target</b>                           | CRTAM                                                                                                                                                                                                                                                 |
| <b>Uniprot ID</b>                       | O95727                                                                                                                                                                                                                                                |
| <b>Description</b>                      | Anti-CRTAM(HuC110-34 biosimilar) mAb                                                                                                                                                                                                                  |
| <b>Delivery</b>                         | In Stock                                                                                                                                                                                                                                              |
| <b>Storage &amp; Shipping</b>           | Store at -20°C to -80°C for 12 months in lyophilized form. After reconstitution, if not intended for use within a month, aliquot and store at -80°C (Avoid repeated freezing and thawing). Lyophilized antibodies are shipped at ambient temperature. |
| <b>Background</b>                       | Research grade biosimilar. Not for use in therapeutic or diagnostic procedures for humans or animals.                                                                                                                                                 |
| <b>Usage</b>                            | Research use only                                                                                                                                                                                                                                     |
| <b>Conjugate</b>                        | Unconjugated                                                                                                                                                                                                                                          |

CONFIDENTIAL



## Anti-CRTAM(HuC110-34 biosimilar) mAb ELISA

0.2  $\mu\text{g}$  of Human CRTAM, mFc tagged protein per well

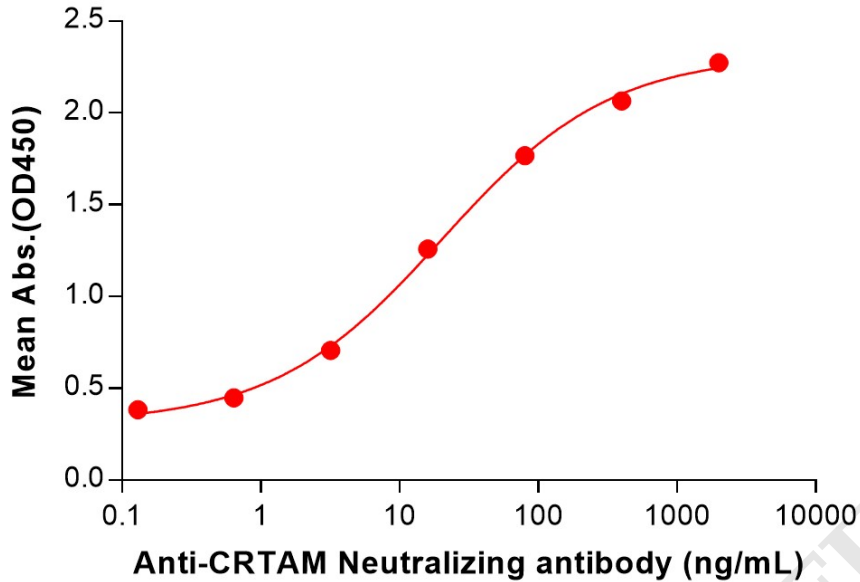


Figure 1. ELISA plate pre-coated by 2  $\mu\text{g}/\text{mL}$  (100  $\mu\text{L}/\text{well}$ ) Human CRTAM Protein, mFc Tag (PME101547) can bind Anti-CRTAM(HuC110-34 biosimilar) mAb (BME100227) in a linear range of 3.20-400 ng/mL.

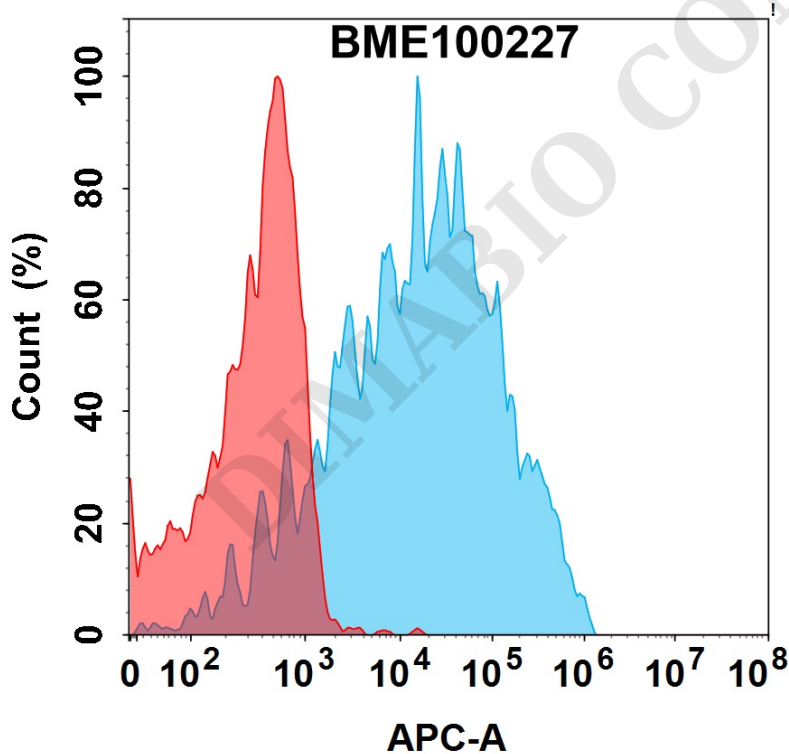


Figure 2. Flow cytometry analysis with 15 $\mu\text{g}/\text{mL}$  Anti-CRTAM(HuC110-34 biosimilar) mAb (BME100227) on Expi293 cells transfected with Human CRTAM protein (Blue histogram) or Expi293 transfected with irrelevant protein (Red histogram).

