

PRODUCT INFORMATION

Clone ID	9A5
Target	CSF1R
Synonyms	CSF1R,C-FMS,CD115,CSFR,FIM2,FMS,M-CSFR
Host Species	Rabbit
Description	Anti-CSF1R antibody(9A5), IgG1 Chimeric mAb
Delivery	In Stock
Uniprot ID	P07333
IgG type	Rabbit/Human Fc chimeric IgG1
Clonality	Monoclonal
Reactivity	Human
Applications	Flow Cyt
Recommended Dilutions	Flow Cyt 1/100
Purification	Purified from cell culture supernatant by affinity chromatography
Formulation & Reconstitution	Lyophilized from sterile PBS, pH 7.4. Normally 5 % - 8% trehalose is added as protectants before lyophilization. Please see Certificate of Analysis for specific instructions of reconstitution.
Storage & Shipping	Store at -20°C to -80°C for 12 months in lyophilized form. After reconstitution, if not intended for use within a month, aliquot and store at -80°C (Avoid repeated freezing and thawing). Lyophilized proteins are shipped at ambient temperature.
Background	The protein encoded by this gene is the receptor for colony stimulating factor 1, a cytokine which controls the production, differentiation, and function of macrophages. This receptor mediates most if not all of the biological effects of this cytokine. Ligand binding activates the receptor kinase through a process of oligomerization and transphosphorylation. The encoded protein is a tyrosine kinase transmembrane receptor and member of the CSF1/PDGF receptor family of tyrosine-protein kinases. Mutations in this gene have been associated with a predisposition to myeloid malignancy. The first intron of this gene contains a transcriptionally inactive ribosomal protein L7 processed pseudogene oriented in the opposite direction. Alternative splicing results in multiple transcript variants. Expression of a splice variant from an LTR promoter has been found in Hodgkin lymphoma (HL), HL cell lines and anaplastic large cell lymphoma.
Usage	Research use only
Conjugate	Unconjugated



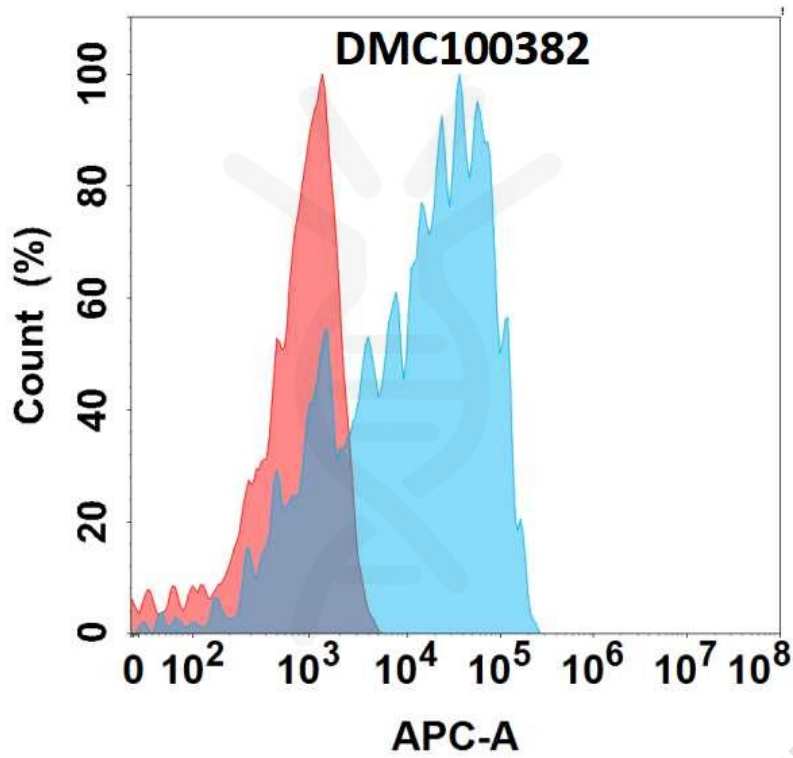


Figure 1. Flow cytometry analysis with 1 μ g/mL Anti-CSF1R (9A5) mAb on Expi293 cells transfected with human CSF1R (Blue histogram) or Expi293 transfected with irrelevant protein (Red histogram).

