

**PRODUCT INFORMATION**

<b>Clone ID</b>	DMC470
<b>Target</b>	CXCR1
<b>Synonyms</b>	C-C; C-C-CKR-1; CD128; CD181; CDw128a; CKR-1; CMKAR1; IL8R1; IL8RA; IL8RBA
<b>Host Species</b>	Rabbit
<b>Description</b>	Anti-CXCR1 antibody(DMC470); IgG1 Chimeric mAb
<b>Delivery</b>	In Stock
<b>Uniprot ID</b>	P25024
<b>IgG type</b>	Rabbit/Human Fc chimeric IgG1
<b>Clonality</b>	Monoclonal
<b>Reactivity</b>	Human
<b>Applications</b>	Flow Cyt
<b>Recommended Dilutions</b>	Flow Cyt 1:100
<b>Purification</b>	Purified from cell culture supernatant by affinity chromatography
<b>Formulation &amp; Reconstitution</b>	Lyophilized from sterile PBS, pH 7.4. Normally 5 % - 8% trehalose is added as protectants before lyophilization. Please see Certificate of Analysis for specific instructions of reconstitution.
<b>Storage &amp; Shipping</b>	Store at -20°C to -80°C for 12 months in lyophilized form. After reconstitution, if not intended for use within a month, aliquot and store at -80°C (Avoid repeated freezing and thawing). Lyophilized proteins are shipped at ambient temperature.
<b>Background</b>	The protein encoded by this gene is a member of the G-protein-coupled receptor family. This protein is a receptor for interleukin 8 (IL8). It binds to IL8 with high affinity; and transduces the signal through a G-protein activated second messenger system. Knockout studies in mice suggested that this protein inhibits embryonic oligodendrocyte precursor migration in developing spinal cord. This gene; IL8RB; a gene encoding another high affinity IL8 receptor; as well as IL8RBP; a pseudogene of IL8RB; form a gene cluster in a region mapped to chromosome 2q33-q36. [provided by RefSeq; Jul 2008]
<b>Usage</b>	Research use only



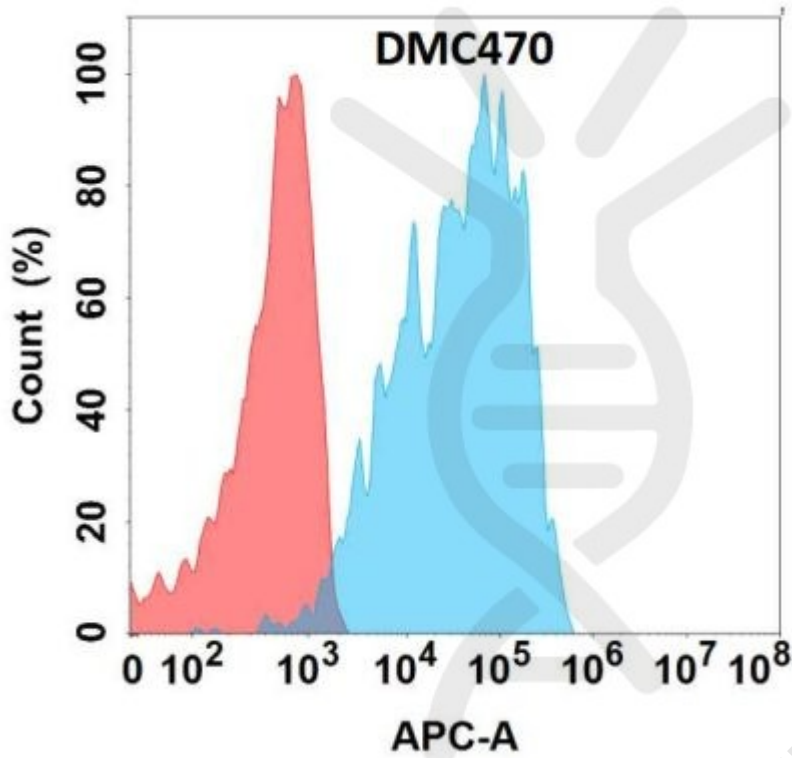


Figure 1. Flow cytometry analysis with Anti-CXCR1 (DMC470) on Expi293 cells transfected with human CXCR1 (Blue histogram) or Expi293 transfected with irrelevant protein (Red histogram).

