

PRODUCT INFORMATION

Clone ID	DMC681
Target	CXCR2
Synonyms	CD182; CDw128b; CMKAR2; IL8R2; IL8RA; IL8RB
Host Species	Rabbit
Description	Anti-CXCR2 antibody(DMC681); IgG1 Chimeric mAb
Delivery	In Stock
Uniprot ID	P25025; Q53PC4
IgG type	Rabbit/Human Fc chimeric IgG1
Clonality	Monoclonal
Reactivity	Human
Applications	Flow Cyt
Recommended Dilutions	Flow Cyt 1:100
Purification	Purified from cell culture supernatant by affinity chromatography
Formulation & Reconstitution	Lyophilized from sterile PBS, pH 7.4. Normally 5 % - 8% trehalose is added as protectants before lyophilization. Please see Certificate of Analysis for specific instructions of reconstitution.
Storage & Shipping	Store at -20°C to -80°C for 12 months in lyophilized form. After reconstitution, if not intended for use within a month, aliquot and store at -80°C (Avoid repeated freezing and thawing). Lyophilized proteins are shipped at ambient temperature.
Background	The protein encoded by this gene is a member of the G-protein-coupled receptor family. This protein is a receptor for interleukin 8 (IL8). It binds to IL8 with high affinity; and transduces the signal through a G-protein activated second messenger system. This receptor also binds to chemokine (C-X-C motif) ligand 1 (CXCL1:MGSA); a protein with melanoma growth stimulating activity; and has been shown to be a major component required for serum-dependent melanoma cell growth. This receptor mediates neutrophil migration to sites of inflammation. The angiogenic effects of IL8 in intestinal microvascular endothelial cells are found to be mediated by this receptor. Knockout studies in mice suggested that this receptor controls the positioning of oligodendrocyte precursors in developing spinal cord by arresting their migration. This gene; IL8RA; a gene encoding another high affinity IL8 receptor; as well as IL8RBP; a pseudogene of IL8RB; form a gene cluster in a region mapped to chromosome 2q33-q36. Alternatively spliced variants; encoding the same protein; have been identified. [provided by RefSeq; Nov 2009]
Usage	Research use only



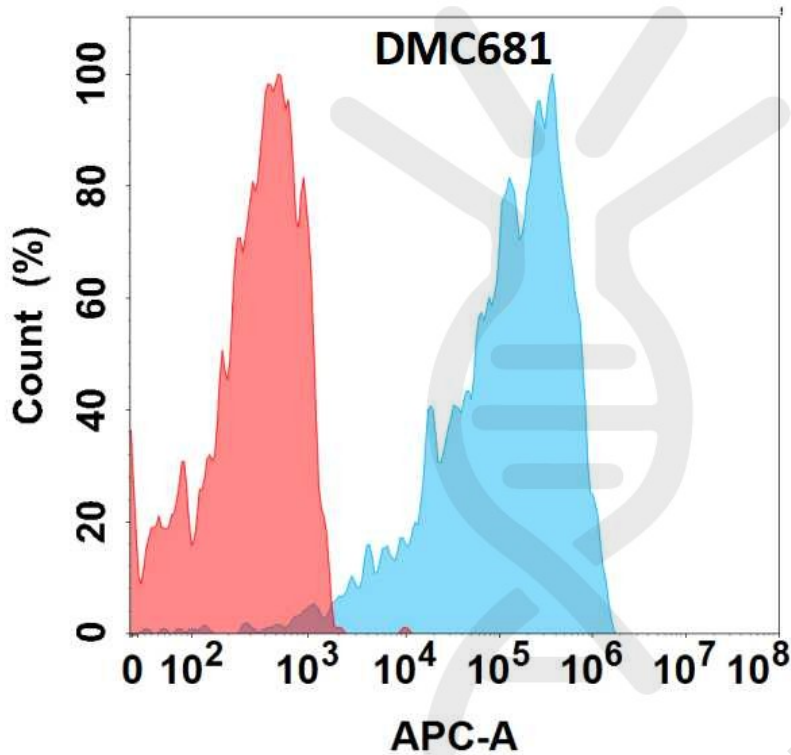


Figure 1. Flow cytometry analysis with Anti-CXCR2(DMC681) on Expi293 cells transfected with human CXCR2(Blue histogram) or Expi293 transfected with irrelevant protein (Red histogram).

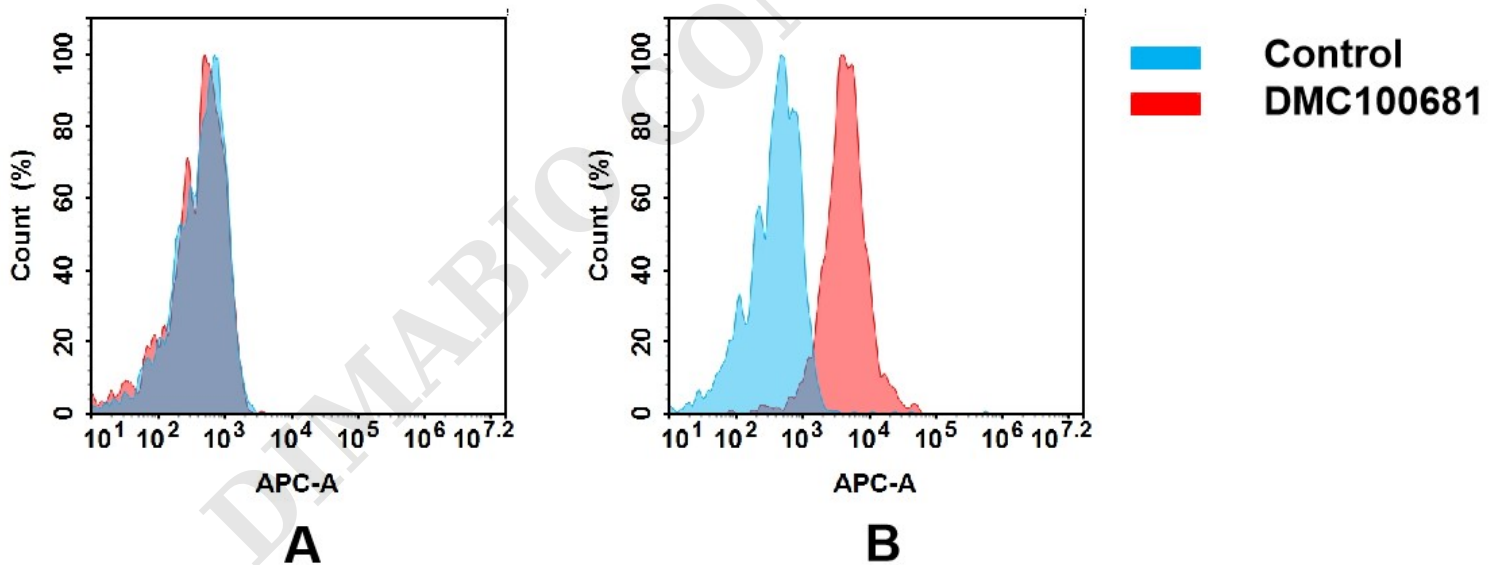


Figure 2. Flow cytometry analysis of antigen binding of anti-human CXCR2 mAb(DMC100681).

(A) DMC100681 does not bind to CHO-S cells that do not express CXCR2.

(B) A clear peak shift of DMC100681 was seen compared to the control when incubated with CXCR2-expressing THP-1 cells, indicating strong binding of DMC100681 to CXCR2. Antibodies were incubated at 5 μ g/mL.

