

PRODUCT INFORMATION

Clone ID	DMC679
Target	CXCR5
Synonyms	Blr1; CXC-R5; CXCR-5; Gpcr6; MDR15
Host Species	Rabbit
Description	Anti-CXCR5 antibody(DMC679); IgG1 Chimeric mAb
Delivery	In Stock
Uniprot ID	P32302; A0N0R2; A8K647; Q2YD84
IgG type	Rabbit/Human Fc chimeric IgG1
Clonality	Monoclonal
Reactivity	Human
Applications	Flow Cyt; IHC
Recommended Dilutions	Flow Cyt 1:100; IHC 1:100
Purification	Purified from cell culture supernatant by affinity chromatography
Formulation & Reconstitution	Lyophilized from sterile PBS, pH 7.4. Normally 5% - 8% trehalose is added as protectants before lyophilization. Please see Certificate of Analysis for specific instructions of reconstitution.
Storage & Shipping	Store at -20°C to -80°C for 12 months in lyophilized form. After reconstitution, if not intended for use within a month, aliquot and store at -80°C (Avoid repeated freezing and thawing). Lyophilized proteins are shipped at ambient temperature.
Background	Cytokine receptor that binds to B-lymphocyte chemoattractant (BLC). Involved in B-cell migration into B-cell follicles of spleen and Peyer patches but not into those of mesenteric or peripheral lymph nodes.[UniProtKB:Swiss-Prot Function]
Usage	Research use only



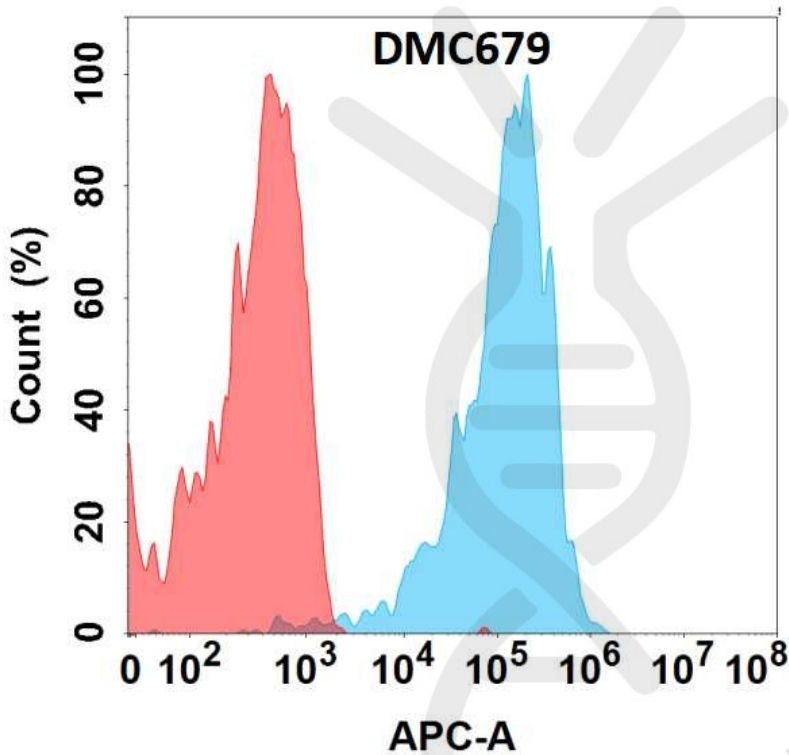


Figure 1. Flow cytometry analysis with Anti-CXCR5(DMC679) on Expi293 cells transfected with human CXCR5(Blue histogram) or Expi293 transfected with irrelevant protein (Red histogram).

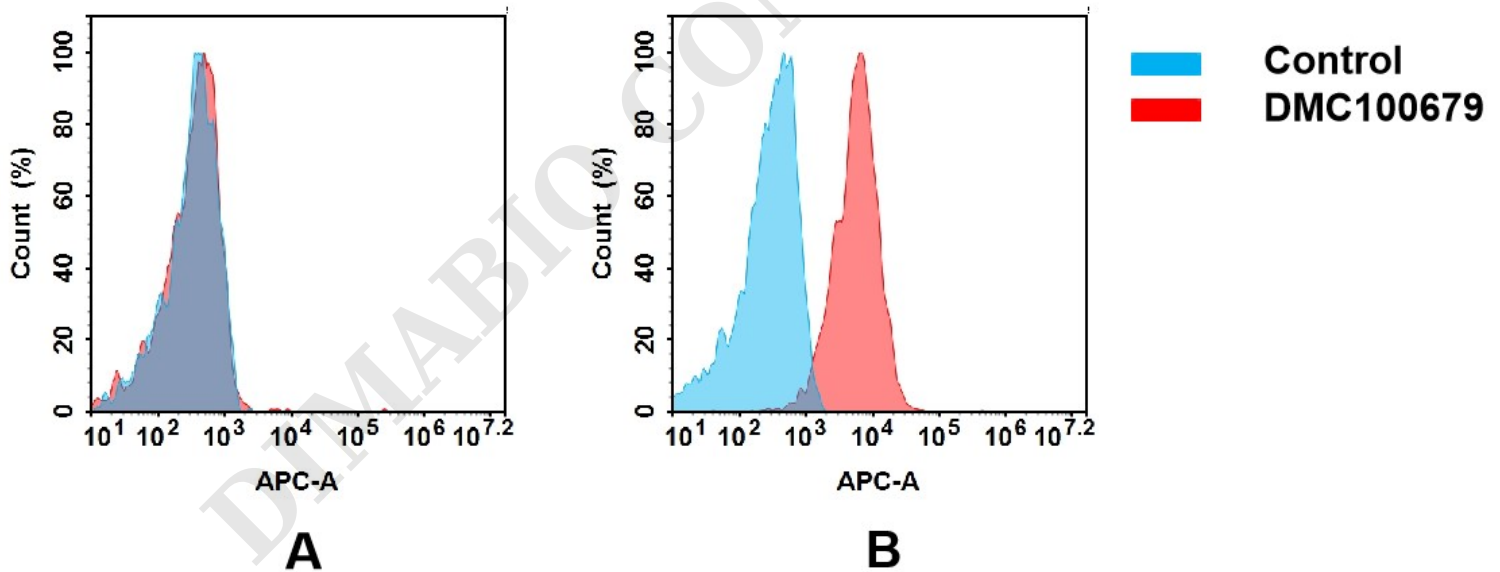


Figure 2. Flow cytometry analysis of antigen binding of anti-human CXCR5 mAb(DMC100679).

(A) DMC100679 does not bind to Hela cells that do not express CXCR5.

(B) A clear peak shift of DMC100679 was seen compared to the control when incubated with CXCR5-expressing Raji cells, indicating strong binding of DMC100679 to CXCR5. Antibodies were incubated at 5 µg/mL.



DMC100679

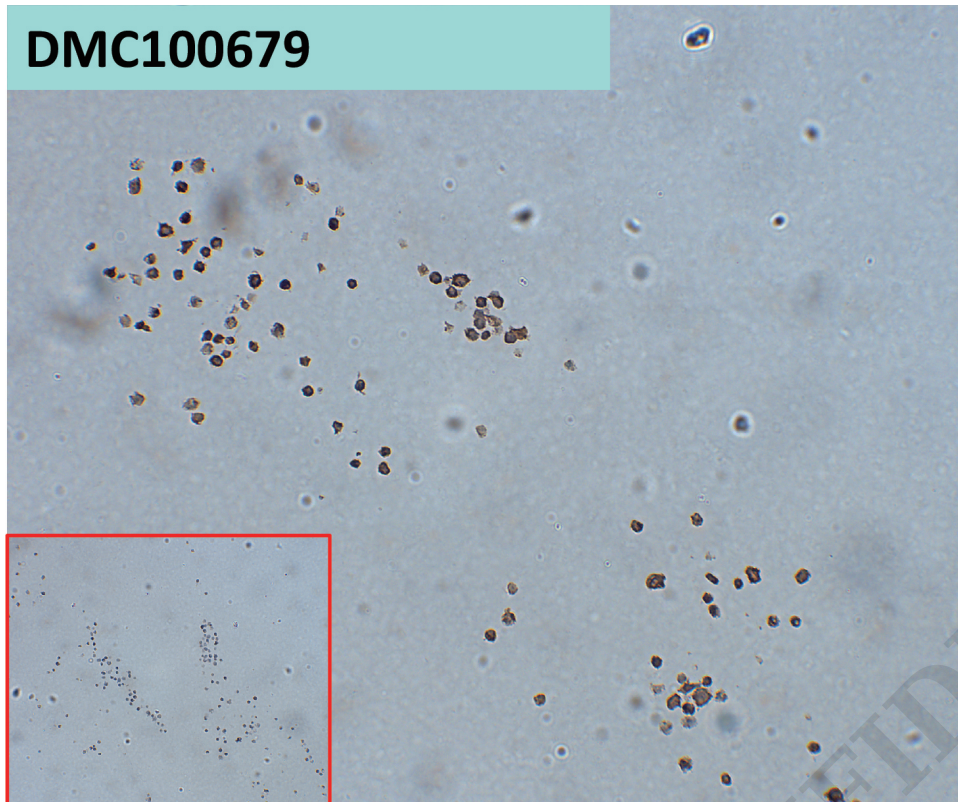


Figure 3. DMC100679 at 10 μ g/ml staining CXCR5 in Raji cells by IHC (SKU# DMC100679)

DIMABIO CONFIDENTIAL

