

PRODUCT INFORMATION

Clone ID	67E6
Target	DLL3
Synonyms	SCDO1
Host Species	Rabbit
Description	Anti-DLL3 antibody(67E6), IgG1 Chimeric mAb
Delivery	In Stock
Uniprot ID	Q9NYJ7
IgG type	Rabbit/Human Fc chimeric IgG1
Clonality	Monoclonal
Reactivity	Human
Applications	Flow Cyt
Recommended Dilutions	Flow Cyt 1/100
Purification	Purified from cell culture supernatant by affinity chromatography
Formulation & Reconstitution	Lyophilized from sterile PBS, pH 7.4. Normally 5% - 8% trehalose is added as protectants before lyophilization. Please see Certificate of Analysis for specific instructions of reconstitution.
Storage & Shipping	Store at -20°C to -80°C for 12 months in lyophilized form. After reconstitution, if not intended for use within a month, aliquot and store at -80°C (Avoid repeated freezing and thawing). Lyophilized proteins are shipped at ambient temperature.
Background	This gene encodes a member of the delta protein ligand family. This family functions as Notch ligands that are characterized by a DSL domain, EGF repeats, and a transmembrane domain. Mutations in this gene cause autosomal recessive spondylocostal dysostosis 1. Two transcript variants encoding distinct isoforms have been identified for this gene. [provided by RefSeq, Jul 2008]
Usage	Research use only



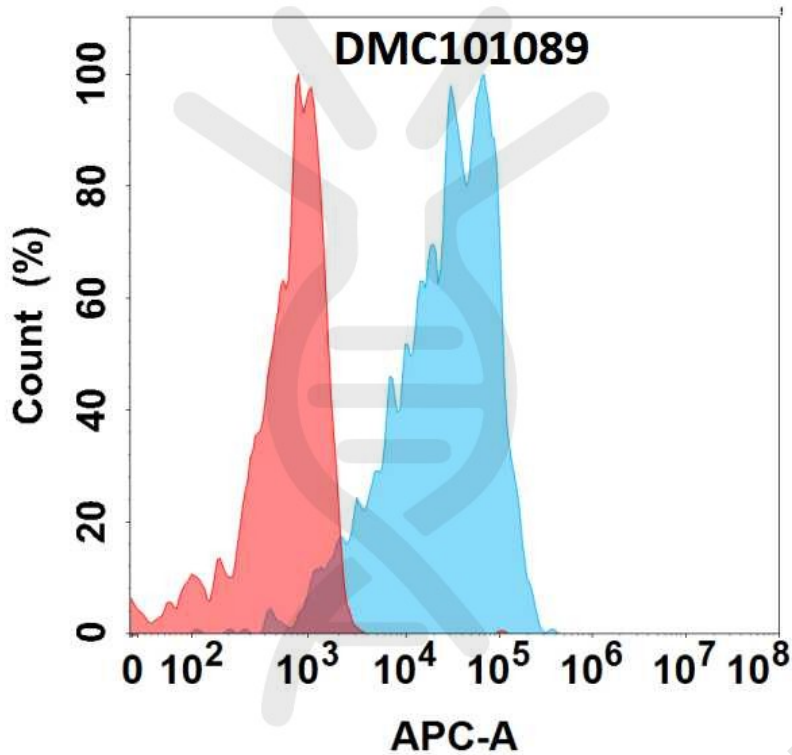


Figure 1. Flow cytometry analysis (Intracellular) with 1 μ g/mL Anti-DLL3 (67E6) mAb on Expi293 cells transfected with human DLL3 (Blue histogram) or Expi293 transfected with irrelevant protein (Red histogram).

