

PRODUCT INFORMATION

Clone ID	DMC388
Target	EDA
Synonyms	ED1; EDA2
Host Species	Rabbit
Description	Anti-EDA antibody(DMC388); IgG1 Chimeric mAb
Delivery	In Stock
Uniprot ID	Q92838
IgG type	Rabbit/Human Fc chimeric IgG1
Clonality	Monoclonal
Reactivity	Human
Applications	Flow Cyt
Recommended Dilutions	Flow Cyt 1:100
Purification	Purified from cell culture supernatant by affinity chromatography
Formulation & Reconstitution	Lyophilized from sterile PBS, pH 7.4. Normally 5 % - 8% trehalose is added as protectants before lyophilization. Please see Certificate of Analysis for specific instructions of reconstitution.
Storage & Shipping	Store at -20°C to -80°C for 12 months in lyophilized form. After reconstitution, if not intended for use within a month, aliquot and store at -80°C (Avoid repeated freezing and thawing). Lyophilized proteins are shipped at ambient temperature.
Background	The protein encoded by this gene is a type II membrane protein that can be cleaved by furin to produce a secreted form. The encoded protein; which belongs to the tumor necrosis factor family; acts as a homotrimer and may be involved in cell-cell signaling during the development of ectodermal organs. Defects in this gene are a cause of ectodermal dysplasia; anhidrotic; which is also known as X-linked hypohidrotic ectodermal dysplasia. Several transcript variants encoding many different isoforms have been found for this gene.
Usage	Research use only



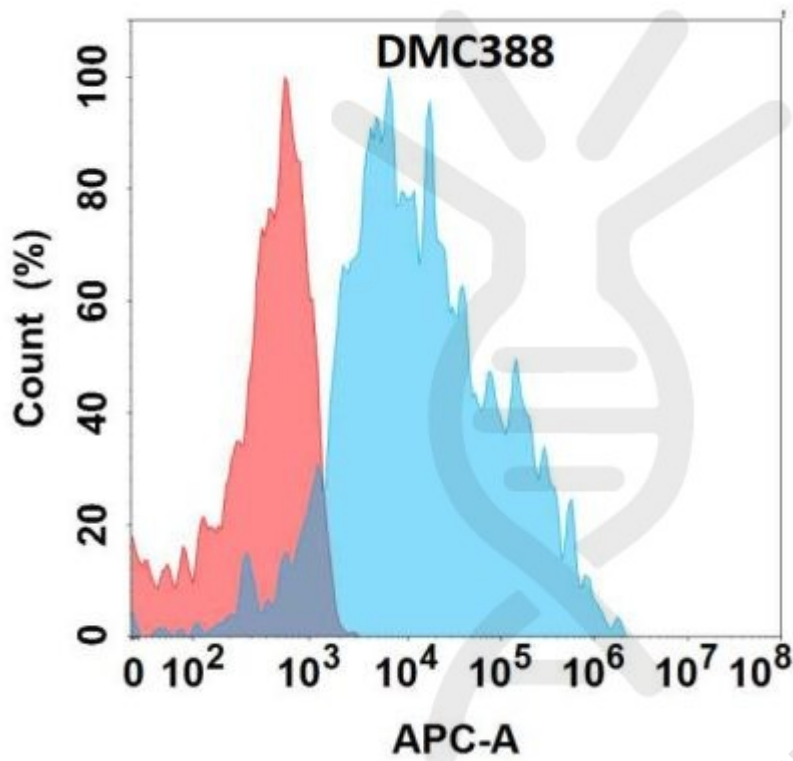


Figure 1. Flow cytometry analysis with Anti-EDA (DMC388) on Expi293 cells transfected with human EDA (Blue histogram) or Expi293 transfected with irrelevant protein (Red histogram).

