

PRODUCT INFORMATION

Clone ID	DM128
Target	EGFR
Synonyms	EGFR;ERBB;ERBB1;HER1;PIG61;mENA
Host Species	Rabbit
Description	Anti-EGFR antibody(DM128); Rabbit mAb
Delivery	In Stock
Uniprot ID	P00533
IgG type	Rabbit IgG
Clonality	Monoclonal
Reactivity	Human
Applications	ELISA; Flow Cyt
Recommended Dilutions	ELISA 1:5000-10000; Flow Cyt 1:100
Purification	Purified from cell culture supernatant by affinity chromatography
Formulation & Reconstitution	Lyophilized from sterile PBS, pH 7.4. Normally 5 % - 8% trehalose is added as protectants before lyophilization. Please see Certificate of Analysis for specific instructions of reconstitution.
Storage & Shipping	Store at -20°C to -80°C for 12 months in lyophilized form. After reconstitution, if not intended for use within a month, aliquot and store at -80°C (Avoid repeated freezing and thawing). Lyophilized proteins are shipped at ambient temperature.
Background	The protein encoded by this gene is a transmembrane glycoprotein that is a member of the protein kinase superfamily. This protein is a receptor for members of the epidermal growth factor family. EGFR is a cell surface protein that binds to epidermal growth factor. Binding of the protein to a ligand induces receptor dimerization and tyrosine autophosphorylation and leads to cell proliferation. Mutations in this gene are associated with lung cancer.
Usage	Research use only
Conjugate	Unconjugated



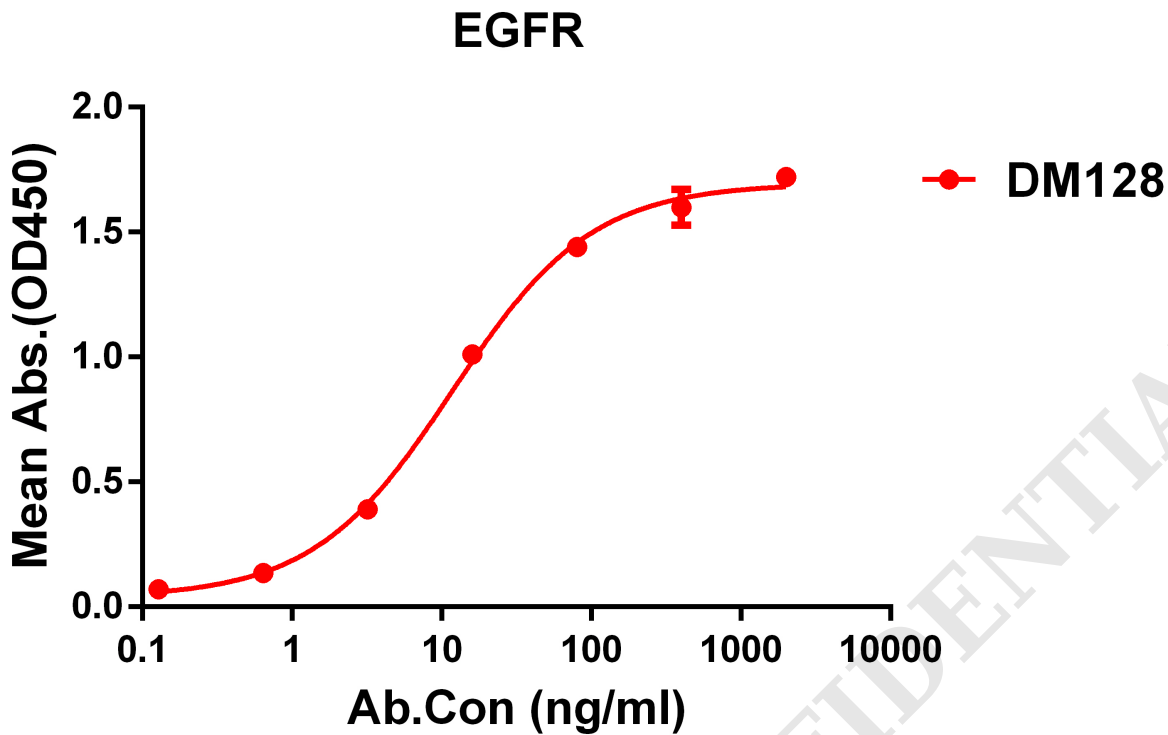


Figure 1. ELISA plate pre-coated by 1 $\mu\text{g/ml}$ (100 $\mu\text{l/well}$) Human EGFR protein, His tagged protein PME100099 can bind Rabbit anti-EGFR monoclonal antibody (clone: DM128) in a linear range of 0. 1-18 ng/ml.

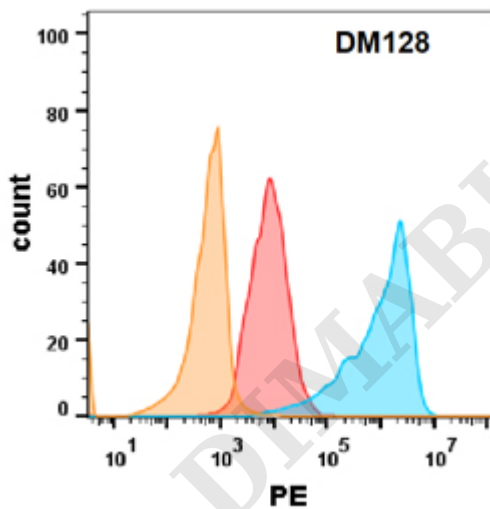


Figure 2. EGFR protein is highly expressed on the surface of Expi293 cell membrane. Flow cytometry analysis with Anti-EGFR (DM128) on Expi293 cells transfected with human EGFR(Blue histogram) or Expi293 transfected with irrelevant protein (Red histogram),and Isotype antibody on Expi293 transfected with irrelevant protein(Orange histogram)



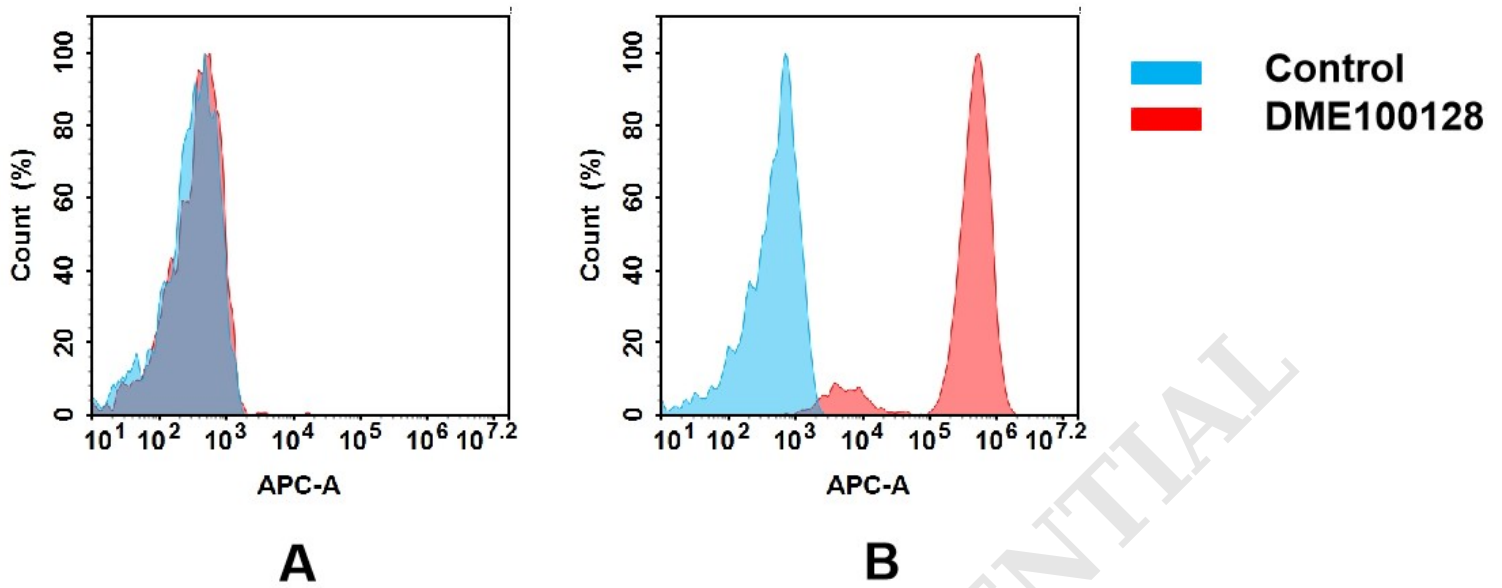


Figure 3. Flow cytometry analysis of antigen binding of rabbit anti-human EGFR mAb(DME100128).

(A) DME100128 does not bind to Jurkat cells that do not express EGFR.

(B) A clear peak shift of DME100128 was seen compared to the control when incubated with EGFR-expressing A431 cells, indicating strong binding of DME100128 to EGFR. Antibodies were incubated at 5 μ g/mL.

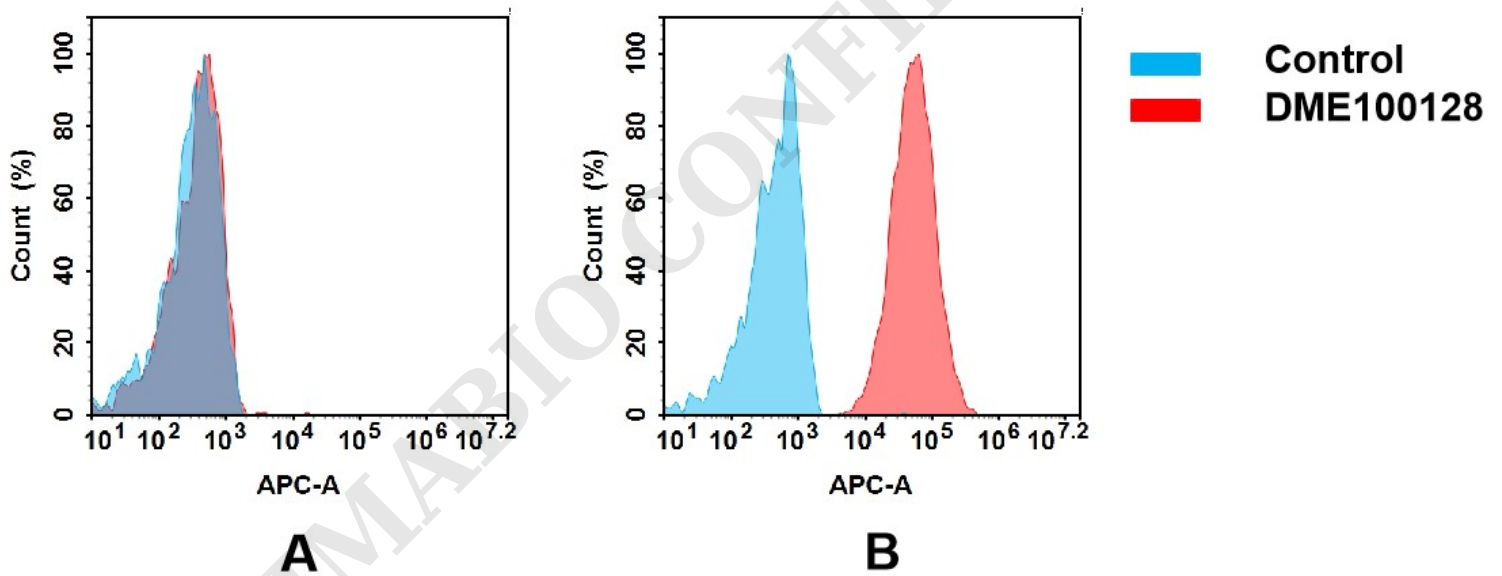


Figure 4. Flow cytometry analysis of antigen binding of rabbit anti-human EGFR mAb(DME100128).

(A) DME100128 does not bind to Jurkat cells that do not express EGFR.

(B) A clear peak shift of DME100128 was seen compared to the control when incubated with EGFR-expressing SNU-5 cells, indicating strong binding of DME100128 to EGFR. Antibodies were incubated at 5 μ g/mL.

