

PRODUCT INFORMATION

Clone ID	DMC473
Target	EMCN
Synonyms	Endomucin; MUC-14
Host Species	Rabbit
Description	Anti-EMCN antibody(DMC473); IgG1 Chimeric mAb
Delivery	In Stock
Uniprot ID	Q9ULC0
IgG type	Rabbit/Human Fc chimeric IgG1
Clonality	Monoclonal
Reactivity	Human
Applications	Flow Cyt
Recommended Dilutions	Flow Cyt 1:100
Purification	Purified from cell culture supernatant by affinity chromatography
Formulation & Reconstitution	Lyophilized from sterile PBS, pH 7.4. Normally 5% - 8% trehalose is added as protectants before lyophilization. Please see Certificate of Analysis for specific instructions of reconstitution.
Storage & Shipping	Store at -20°C to -80°C for 12 months in lyophilized form. After reconstitution, if not intended for use within a month, aliquot and store at -80°C (Avoid repeated freezing and thawing). Lyophilized proteins are shipped at ambient temperature.
Background	EMCN is a mucin-like sialoglycoprotein that interferes with the assembly of focal adhesion complexes and inhibits interaction between cells and the extracellular matrix (Kinoshita et al.; 2001 [PubMed 11418125]).[supplied by OMIM; Mar 2008]
Usage	Research use only



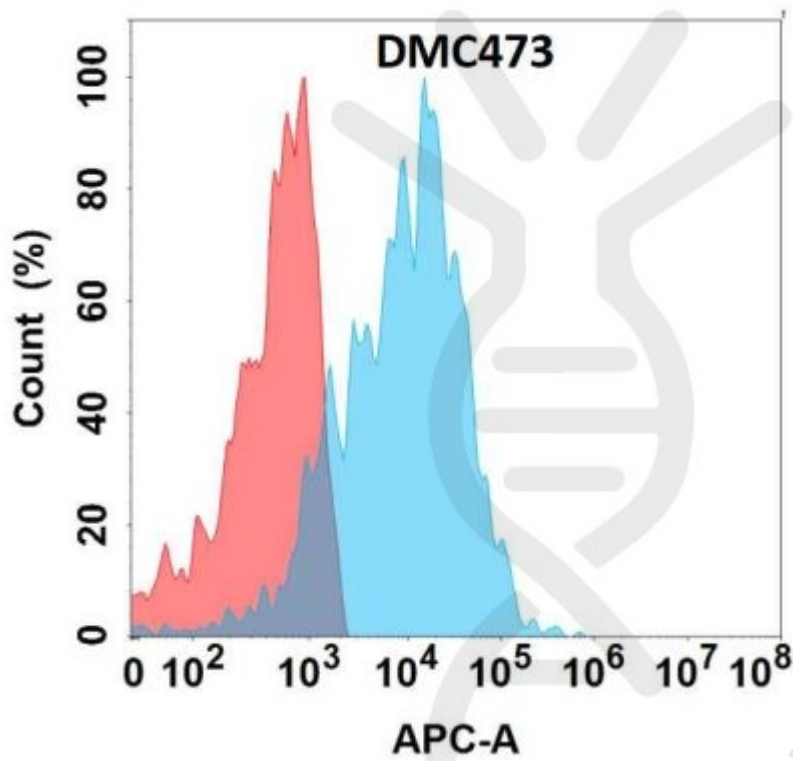


Figure 1. Flow cytometry analysis with Anti-EMCN (DMC473) on Expi293 cells transfected with human EMCN (Blue histogram) or Expi293 transfected with irrelevant protein (Red histogram).

