

PRODUCT INFORMATION

Clone ID	DM154
Target	FAP
Synonyms	FAP;FAPalpha;SIMP;Seprase;APCE
Host Species	Rabbit
Description	Anti-FAP antibody(DM154); Rabbit mAb
Delivery	In Stock
Uniprot ID	Q12884
IgG type	Rabbit IgG
Clonality	Monoclonal
Reactivity	Human
Applications	ELISA; Flow Cyt
Recommended Dilutions	ELISA 1:5000-10000; Flow Cyt 1:100
Purification	Purified from cell culture supernatant by affinity chromatography
Formulation & Reconstitution	Lyophilized from sterile PBS, pH 7.4. Normally 5 % - 8% trehalose is added as protectants before lyophilization. Please see Certificate of Analysis for specific instructions of reconstitution.
Storage & Shipping	Store at -20°C to -80°C for 12 months in lyophilized form. After reconstitution, if not intended for use within a month, aliquot and store at -80°C (Avoid repeated freezing and thawing). Lyophilized proteins are shipped at ambient temperature.
Background	The protein encoded by this gene is a homodimeric integral membrane gelatinase belonging to the serine protease family. It is selectively expressed in reactive stromal fibroblasts of epithelial cancers; granulation tissue of healing wounds; and malignant cells of bone and soft tissue sarcomas. This protein is thought to be involved in the control of fibroblast growth or epithelial-mesenchymal interactions during development; tissue repair; and epithelial carcinogenesis. Alternatively spliced transcript variants encoding different isoforms have been found for this gene.
Usage	Research use only
Conjugate	Unconjugated



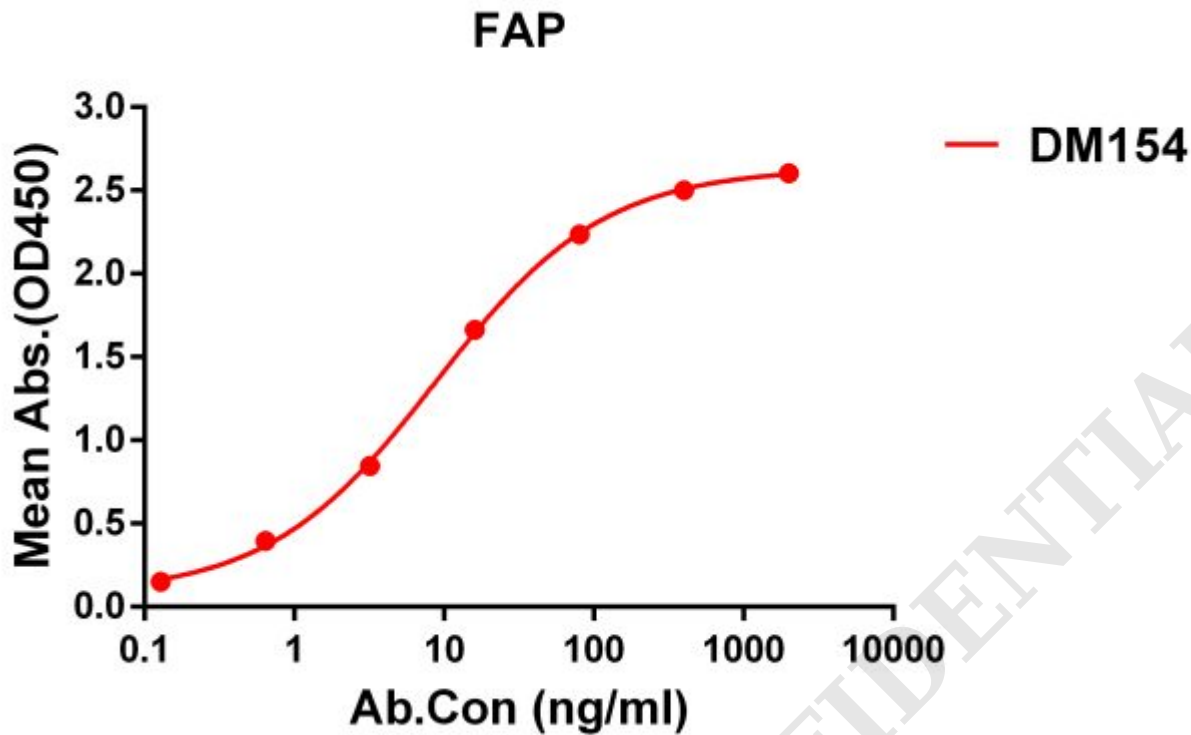


Figure 1. ELISA plate pre-coated by 1 $\mu\text{g/ml}$ (100 $\mu\text{l/well}$) Human FAP protein, His tagged protein (Igetskuurl sku="PME100626") can bind Rabbit anti-FAP monoclonal antibody(**clone: DM154**) in a linear range of 1-500 ng/ml.

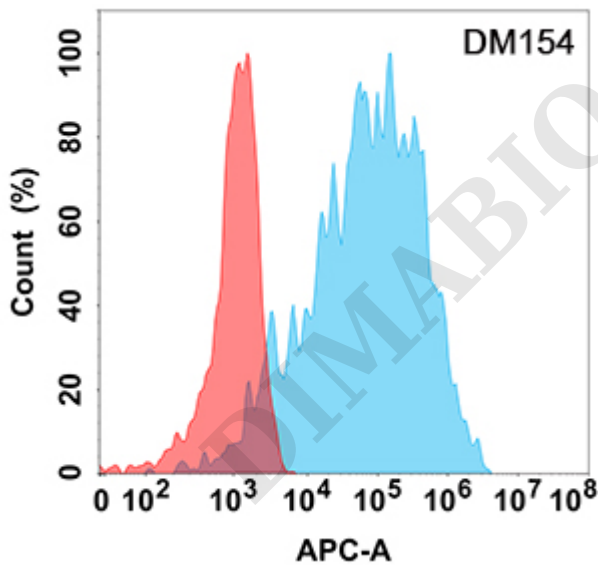


Figure 2. Flow cytometry analysis with Anti-FAP (DM154) on Expi293 cells transfected with human FAP (Blue histogram) or Expi293 transfected with irrelevant protein (Red histogram).

