

PRODUCT INFORMATION

Clone ID	DMC219
Target	FCGR3A
Synonyms	FCGR3A;CD16A;FCG3;FCGR3;IGFR3
Host Species	Rabbit
Description	Anti-FCGR3A antibody(DMC219); IgG1 Chimeric mAb
Delivery	In Stock
Uniprot ID	P08637
IgG type	Rabbit/Human Fc chimeric IgG1
Clonality	Monoclonal
Reactivity	Human
Applications	ELISA; Flow Cyt
Recommended Dilutions	ELISA 1:5000-10000; Flow Cyt 1:100
Purification	Purified from cell culture supernatant by affinity chromatography
Formulation & Reconstitution	Lyophilized from sterile PBS, pH 7.4. Normally 5 % - 8% trehalose is added as protectants before lyophilization. Please see Certificate of Analysis for specific instructions of reconstitution.
Storage & Shipping	Store at -20°C to -80°C for 12 months in lyophilized form. After reconstitution, if not intended for use within a month, aliquot and store at -80°C (Avoid repeated freezing and thawing). Lyophilized proteins are shipped at ambient temperature.
Background	This gene encodes a receptor for the Fc portion of immunoglobulin G; and it is involved in the removal of antigen-antibody complexes from the circulation; as well as other other antibody-dependent responses. This gene (FCGR3A) is highly similar to another nearby gene (FCGR3B) located on chromosome 1. The receptor encoded by this gene is expressed on natural killer (NK) cells as an integral membrane glycoprotein anchored through a transmembrane peptide; whereas FCGR3B is expressed on polymorphonuclear neutrophils (PMN) where the receptor is anchored through a phosphatidylinositol (PI) linkage. Mutations in this gene have been linked to susceptibility to recurrent viral infections; susceptibility to systemic lupus erythematosus; and alloimmune neonatal neutropenia. Alternatively spliced transcript variants encoding different isoforms have been found for this gene.
Usage	Research use only
Conjugate	Unconjugated



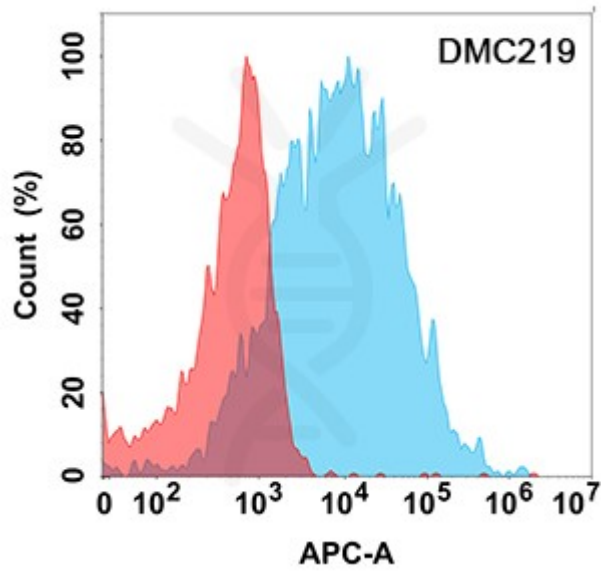


Figure 1. Flow cytometry analysis with Anti-FCGR3A (DMC219) on Expi293 cells transfected with human FCGR3A (Blue histogram) or Expi293 transfected with irrelevant protein (Red histogram).

