

PRODUCT INFORMATION

Common Name	BFCR-4350-A, BFCR-4350A, RG-6160, RO-7187797
Conjugate	Unconjugated
Synonyms	BXMAS1;CD307;CD307e;FCRH5;IRTA2;PRO820
Applications	ELISA; Flow Cyt
Recommended Dilutions	ELISA 1:5000-10000; Flow Cyt 1:100
Formulation & Reconstitution	Lyophilized from sterile PBS, pH 7.4. Normally 5% - 8% trehalose is added as protectants before lyophilization. Please see Certificate of Analysis for specific instructions of reconstitution.
Host Species	Humanized
IgG type	IgG1
Reactivity	Human
Target	FCRL5
Uniprot ID	Q96RD9
Description	Anti-FCRL5(cevostamab biosimilar without anti-CD3 portion) mAb
Delivery	In Stock
Storage & Shipping	Store at -20°C to -80°C for 12 months in lyophilized form. After reconstitution, if not intended for use within a month, aliquot and store at -80°C (Avoid repeated freezing and thawing). Lyophilized proteins are shipped at ambient temperature.
Background	Research grade biosimilar. Not for use in therapeutic or diagnostic procedures for humans or animals.
Usage	Research use only
DIMA Disclaimer	All DIMA recombinant antibodies are genuinely generated by DIMA Biotech. They are all under patent application. Any protein sequencing or reverse engineering attempt is prohibited. We are actively scrutinizing all patent application to ensure no IP infringement.



Anti-FCRL5(cevostamab biosimilar without anti-CD3 portion) mAb ELISA

0.2 μg of Human FCRL5, His tagged protein per well

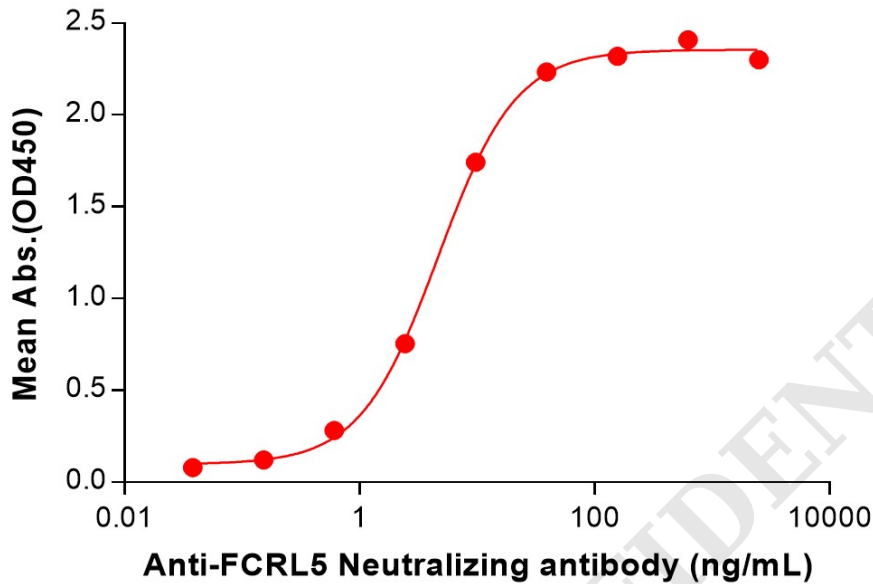


Figure 1. ELISA plate pre-coated by 2 $\mu\text{g}/\text{mL}$ (100 $\mu\text{L}/\text{well}$) Human FCRL5 Protein, His Tag (PME100625) can bind Anti-FCRL5(cevostamab biosimilar without anti-CD3 portion) mAb (BME100089) in a linear range of 0.61-39.06 ng/mL.

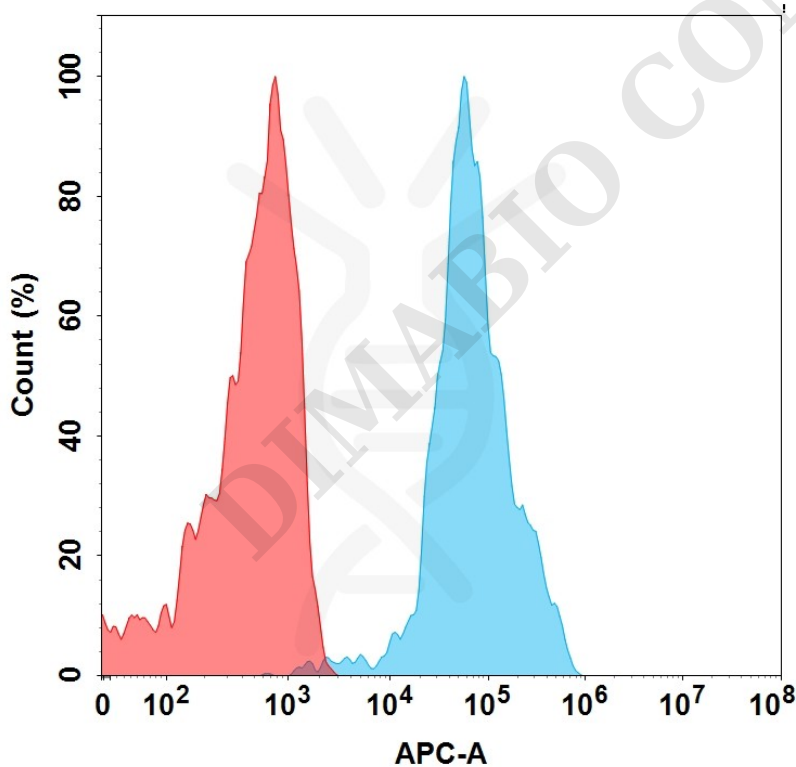


Figure 2. Flow cytometry analysis with 1 $\mu\text{g}/\text{mL}$ Anti-FCRL5 (cevostamab biosimilar) mAb (BME100089) on Expi293 cells transfected with Human FCRL5 protein (Blue histogram) or Expi293 transfected with irrelevant protein (Red histogram).



Anti-FCRL5(cevostamab biosimilar without anti-CD3 portion) mAb ELISA

0.2 μg of Human FCRL5, mFc tagged protein per well

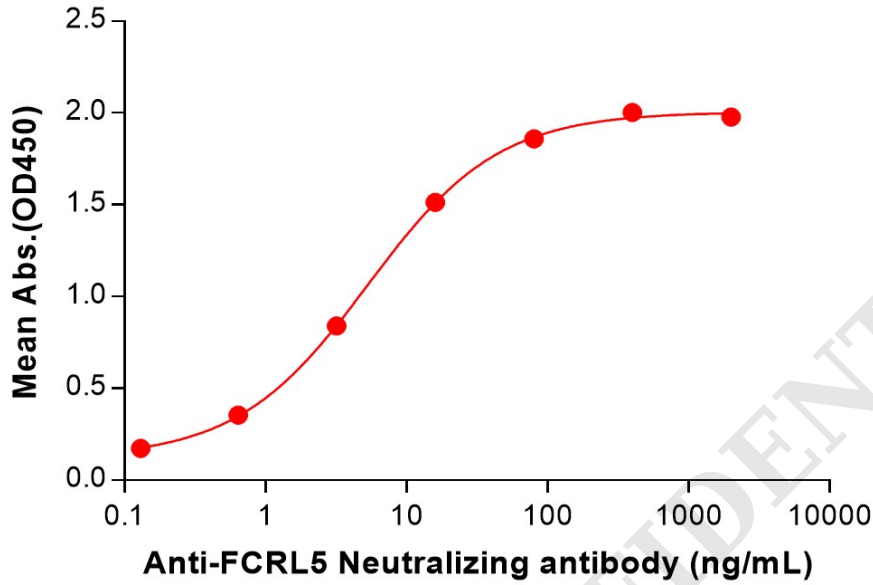


Figure 3. ELISA plate pre-coated by 2 $\mu\text{g}/\text{mL}$ (100 $\mu\text{L}/\text{well}$) Human FCRL5(745-847) Protein, mFc Tag (PME101495) can bind Anti-FCRL5(cevostamab biosimilar without anti-CD3 portion) mAb (BME100089) in a linear range of 0.64-80 ng/mL.

